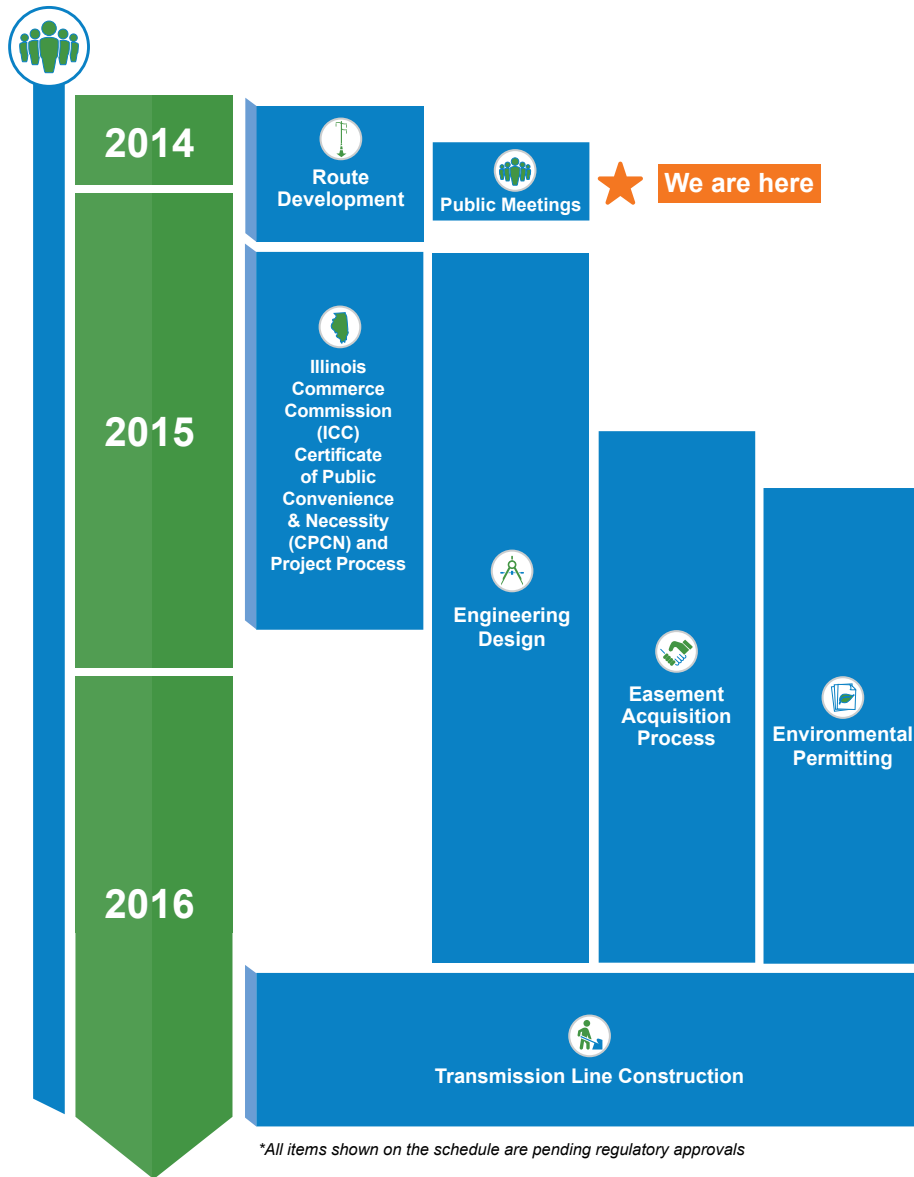
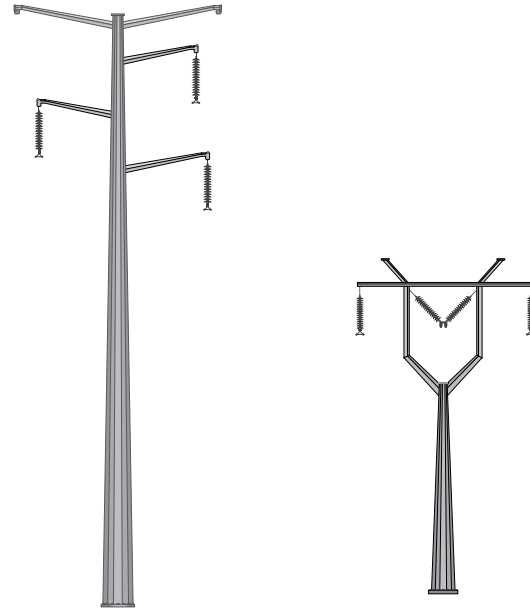


## PROJECT SCHEDULE\*

Stakeholder and public outreach will occur throughout the project



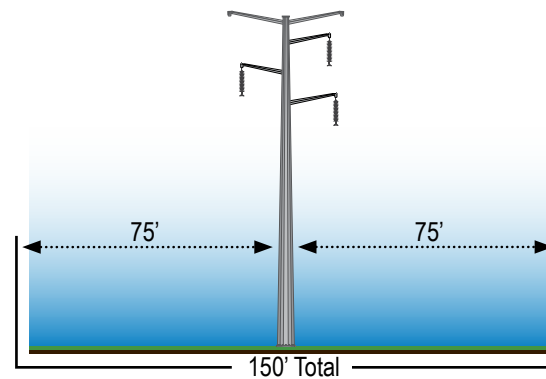
## STRUCTURE DESIGN



**Standard Structure**  
This structure would be used on the blue or orange route

**Alternative Structure**  
Due to FAA restrictions, this structure would be used on the green route

Voltage	345,000 volts
Structure Type	<u>Standard:</u> Single-shaft steel pole <u>Alternative:</u> Single-shaft Y pole
Height Range (typical)	<u>Standard:</u> 90 – 130 feet <u>Alternative:</u> 50 – 70 feet
Foundation	Concrete pier
Foundation Diameter (typical)	<u>Standard:</u> 7 – 10 feet <u>Alternative:</u> 6 – 9 feet
Span Length (average)	<u>Standard:</u> 850 feet <u>Alternative:</u> 400 feet
Structures per Mile (average)	<u>Standard:</u> 6 – 7 <u>Alternative:</u> 13 – 14
Conductor Clearance	25 feet (minimum)
Line Easement Width	150 feet



## Open House Handout

# ADAMS COUNTY RD 550 CONNECTOR

## PROJECT OVERVIEW

Ameren Transmission Company of Illinois (ATXI) proposes to build a new 345,000-volt electrical transmission line in Adams County. Federal Aviation Administration (FAA) regulation requirements have made construction of a two mile portion of the Quincy to Meredosia segment of the Illinois Rivers Project, approved for construction by the Illinois Commerce Commission (ICC) in Docket 12-0598, impractical in its current location.

The Adams County Rd 550 Connector will connect to each end of that two mile portion in a manner consistent with FAA requirements. The estimated in-service date for the Quincy to Meredosia segment of the Illinois Rivers Project including this new transmission line is by the end of 2016.

## PROJECT SNAPSHOT

- A new 345,000-volt transmission line located near Quincy, IL
- Approximately two miles long
- In-service date: End of 2016
- Single-shaft steel poles
- 150-foot easement width

## PROJECT BENEFITS

Approval of the Adams County Rd 550 Connector is necessary to provide adequate, reliable, and efficient service to area customers, will promote the development of an effectively competitive electricity market that operates efficiently, is equitable to all customers, and is the least cost means of satisfying those objectives. This new line is necessary to realize the full benefits of the Illinois Rivers Project, which, once integrated into the existing Illinois electric transmission system, will provide the following benefits:

- Increased reliability
- Additional economic and market efficiency benefits to Illinois customers and customers outside Illinois.
- Deliver renewable energy

## UP NEXT: Illinois Commerce Commission (ICC) Process

With the proposed routes identified, the next step for the Adams County Rd 550 Connector is to file a petition with the ICC requesting their review and approval of the project. If approved, the ICC will issue a Certificate of Public Convenience and Necessity (CPCN) and approve final routes.

Once the Petition is filed, the ICC will issue a docket number. For more information, visit:

[www.icc.illinois.gov](http://www.icc.illinois.gov)

Docket documents can be viewed at:  
[www.icc.illinois.gov/e-docket](http://www.icc.illinois.gov/e-docket)

View a process graphic on our website at [AdamsCountyConnector.com](http://AdamsCountyConnector.com) on the Process page.

## What is an easement?

An easement is an interest or right to use the land of another for a specific purpose. For this project, landowners will be requested to grant an easement to ATXI for the right to use a defined strip of land for an electric transmission line:

- construction
- operation
- maintenance

## NEED MORE INFORMATION OR TO SUBMIT INPUT? CONTACT US AT:

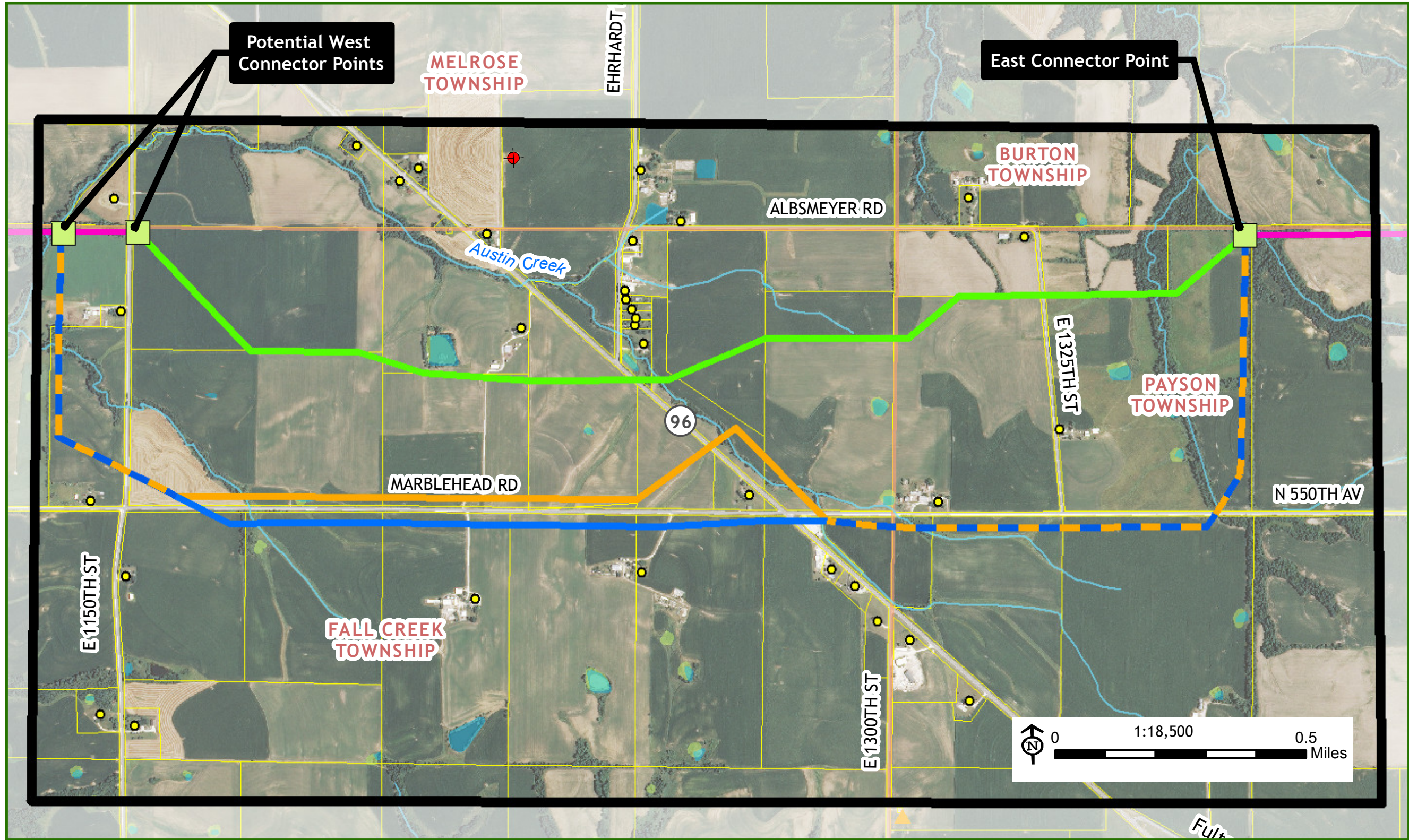
- [AdamsCountyConnector.com](http://AdamsCountyConnector.com)
- [AdamsCountyConnector@ameren.com](mailto:AdamsCountyConnector@ameren.com)
- 888.825.1816

Adams County Rd 550 Connector • 5201 S 6th Street Rd • Springfield, IL 62703





# ADAMS COUNTY RD 550 CONNECTOR PROPOSED ROUTES



## Proposed Routes

- Route A
- Route B
- Route C

— Illinois Rivers Project  
Approved Route (Docket  
No. 12-0598)

- Project Area
- Connector Point
- Township

- City
- Parcel
- Vortac

- Residence
- ▲ Communication Tower
- Wetland (NWI)

The information provided on this map is for discussion purposes only. ATXI is not bound in any way to the representations reflected on this map. This map does not represent a final determination by ATXI as to route selection, and ATXI is not restricted or barred from modifying or deviating from the routes proposed, or considering new or different routes. All routes are subject to change pending Illinois Commerce Commission approval.