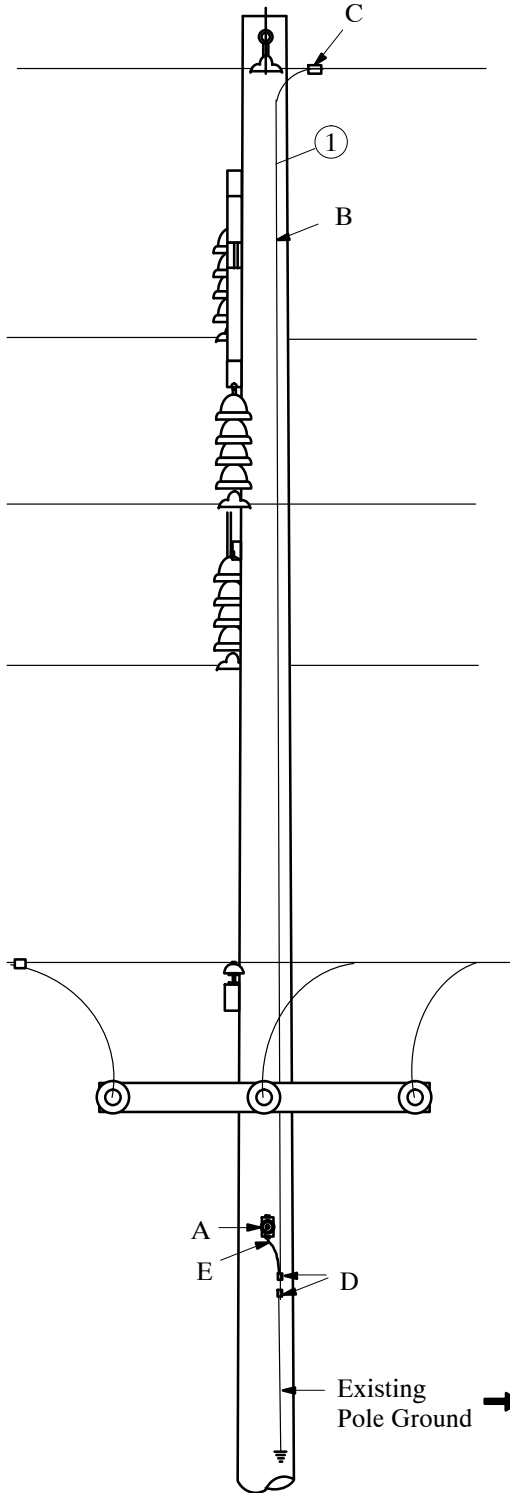


CONFIGURATIONS

Distribution Neutral Tap Connection to Sub-Transmission Static Wire

03 01 02 **

Sheet 1 of 1



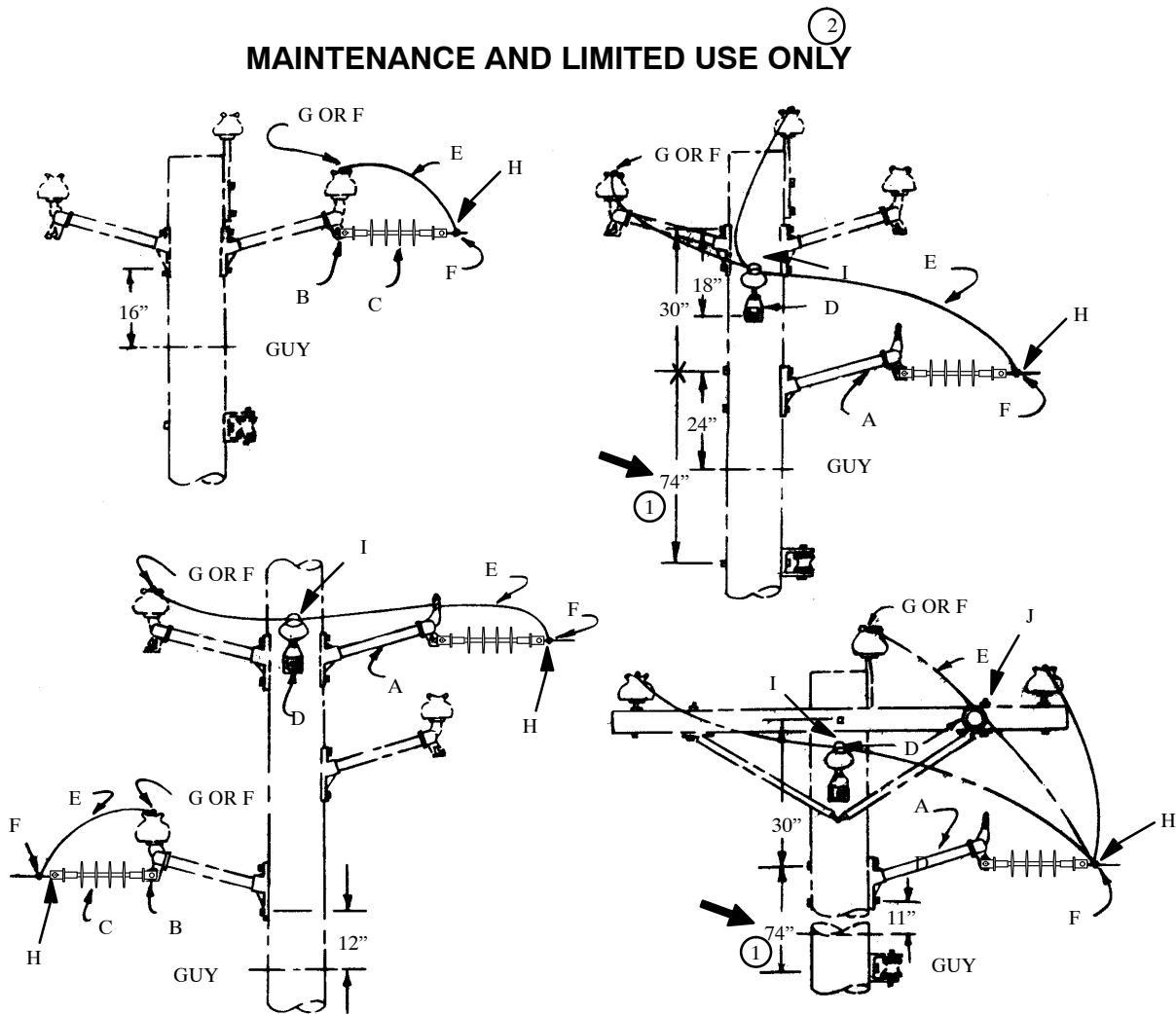
Notes:

1. Connection from tap neutral to static/neutral wire must be at least the same ampacity as the tap neutral. For tap neutral, replace existing pole ground with #2 SD Cu. to a point 2-3' below tap neutral.
2. Install ground wire moulding in congested areas as required.
3. Install ground wire on quarter of pole that provides best clearance from center phase.

<u>Tap Neutral</u>	<u>Std.</u>
1/0 ACSR or AAAC	03 01 02 01
#4 ACSR	03 01 02 02

	Std./Stk. No.	Description	03 01 02 **	01	02
A	06 01 01 01	Clevis, Secondary		1	1
B	18 51 019	Wire, Cu, #2 SD, Poly Covered		30	
C	17 51 137	Clamp, PG		1	
D	17 51 032	Connector, Split Bolt		2	1
E	23 68 472	Deadend, Preformed, 1/0 ACSR or AAAC		1	
	23 68 469	Deadend, Preformed, #4 ACSR			1

MAINTENANCE AND LIMITED USE ONLY



ARMLESS CONSTRUCTION

Near Phase	03 12 20 01
Top or Far Phase	03 12 20 02

CROSSARM CONSTRUCTION

Near Phase	03 12 20 05
Top Phase	03 12 20 06
Far Phase	03 12 20 02

Notes

1. See Dist. Std. **03 00 01 00** for neutral spacing information. May be reduced to 40" if pole space is limited.
2. This standard to be used only for non-fused single phase taps that do not pass through wooded areas and are of limited length (1 or 2 spans).

CONFIGURATIONS
 Single Phase Tap from Two or Three Phase Line
 4 to 15kV

03 12 20 **

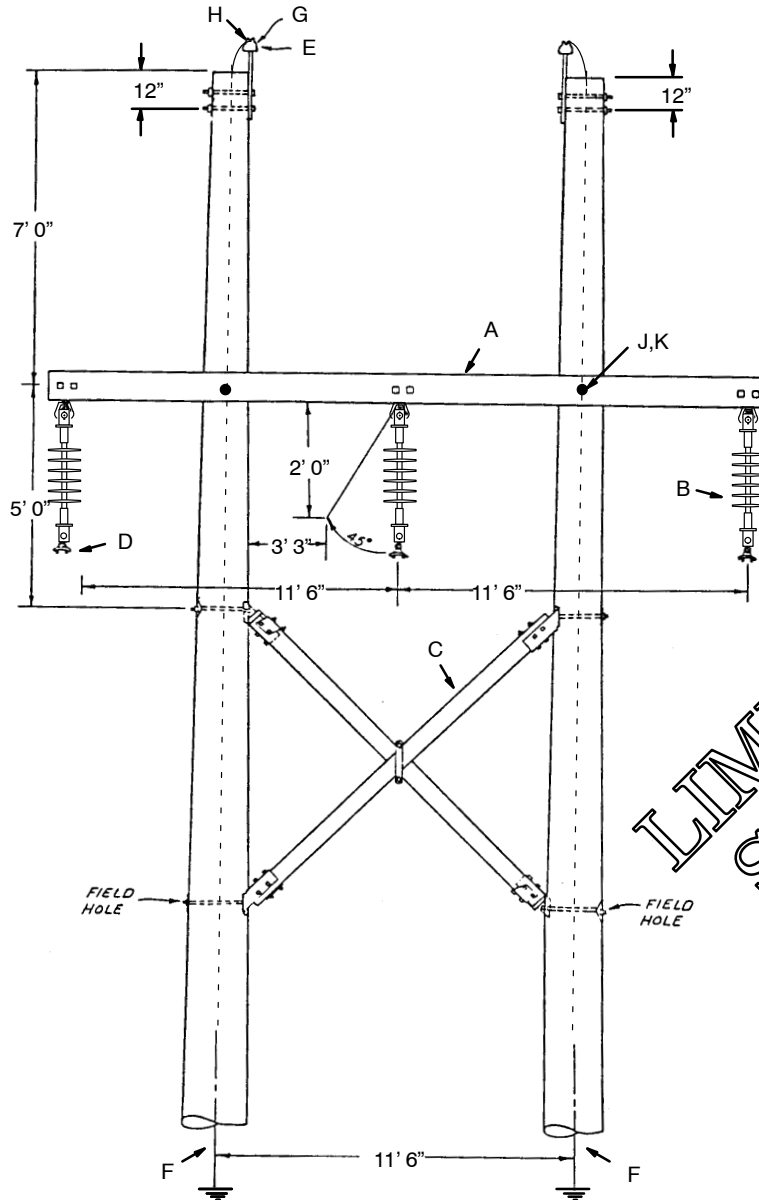
Sheet 2 of 2

	Std. / Stk. No.	Description	03 12 20 **	01	02	05	06
	A 06 12 21 06	Assembly – Standoff, 24” FG			1	1	1
	B 23 68 181	Shackle – Deadend		2			
	C 25 06 052	Insulator – Deadend, 12 kV		1			
	D 06 12 20 04	Insulator – Standoff, 18” LD			1	1	
	06 12 01 01	Insulator – Crossarm					1
@	E PLW*W	Lead Wire, Poly Covered Ft.		3	10	6	10
@	F PG*	See Std. 07 00 25 00		2	2	2	2
@	G HLC*W	Hot Line Clamp					
@	H DEC*W	Deadend Clamp		1	1	1	1
@		252 or 260		@	@	@	@
@	I TT*W	Top Tie			1	1	
@	J ST*W	Side Tie					1

CONFIGURATIONS
Single Circuit
H-Frame – 69kV

03 69 30 01

Sheet 1 of 1



LIMITED USE
STANDARD

	Std. / Stk. No.	Description	03 69 30 01
@	A 41 01 185	Crossarm, Dble., 24'	1
	B 25 06 089	Insulator, Susp., Polymer	3
	C 41 51 186	Brace X – 11 ft. 6 in. c.c. Spacing	1
@	D SC*W	Suspension Clamp	3
	E 06 12 01 02	Insulator, Pole Top	2
	F 12 00 10 01	Grounding Unit	2
@	G TT*W	Top Tie	2
@	H PG*	See Std. 07 00 25 00	2
	J 23 52 118	Bolt, 3/4 x 20", w / Nut	2
	K 23 66 030	Washer, 3/4", 3" Square	8

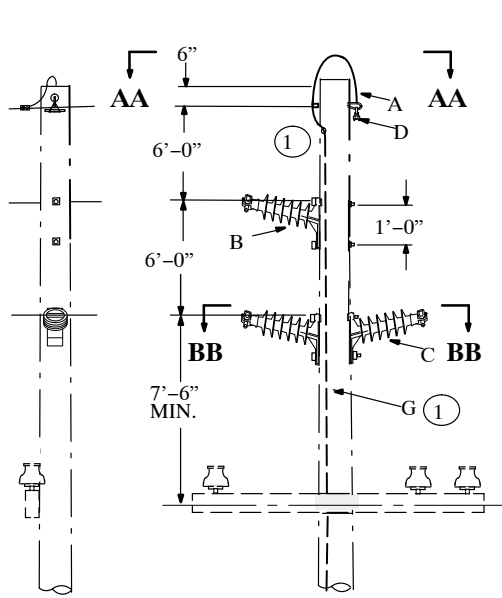
CONFIGURATIONS

Unguyed Composite Pole – 34kV or 69kV

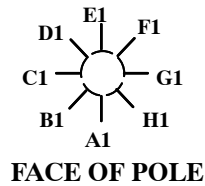
Angle Structure for Line Angle >1° and ≤ 20°

03 69 52 **

Sheet 1 of 2



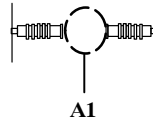
01



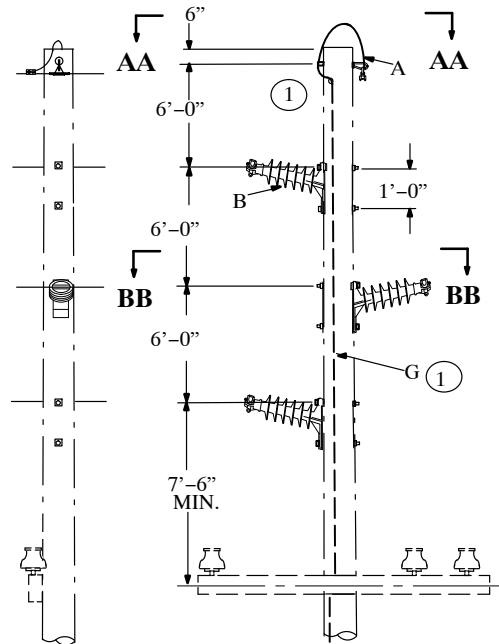
FACE OF POLE



SECTION AA-AA



SECTION BB-BB



02

NOTES:

1. Factory (internal) installed pole ground in quadrant B1. See DCS 12 00 10 12 for grounding detail.
2. See DCS 02 00 04 04 and DCS 02 00 04 05 for proper conductor tension, depth, and pole rake based on line angle.

		Std./Stk. No.	Description	03 69 52 **	01	02
@	A	06 00 11 04	Static Support w/Suspension Clamp		1	1
	B	06 69 03 03	Insulator, 69kV Horz, Post, Single Polymer w/Trunnion Clamp		1	3
06 69 03 01		Insulator, 69kV Horz, Post, Single Polymer w/Susp. Clamp		1	3	
@	C	06 69 03 02	Insulator, 69kV Horz, Post, Double Polymer w/Susp. Clamp		1	
		06 69 03 04	Insulator, 69kV Horz, Post, Double Polymer w/Trunnion Clamp		1	
@	D	SC*W	Clamp, Suspension, Static wire		1	1
@	E	TC*W	Clamp, Trunn, Angle, Conductor		3	3
		SC*W	Clamp, Suspension, Angle, Conductor		3	3
@	F	02 20 05 12	Backfill and Reinforcement		1	1
	G	12 00 10 12	Grounding Unit		1	1

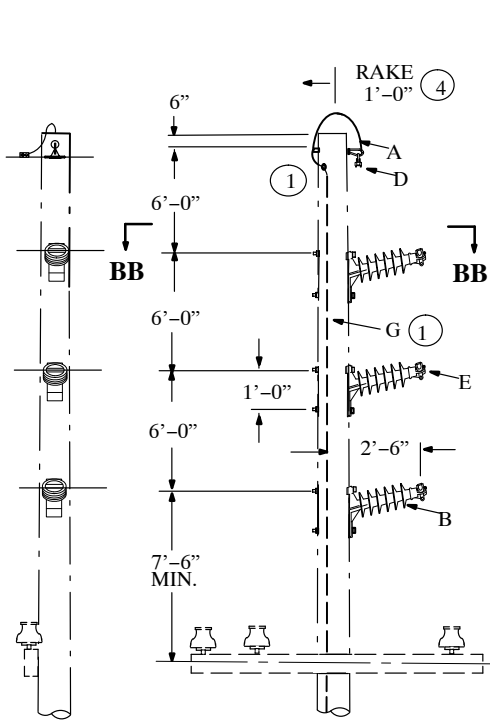
CONFIGURATIONS

Unguyed Composite Pole – 34kV or 69kV

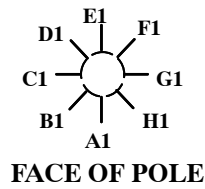
Angle Structure for Line Angle $>1^\circ$ and $\leq 20^\circ$

03 69 52 **

Sheet 2 of 2



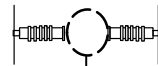
03



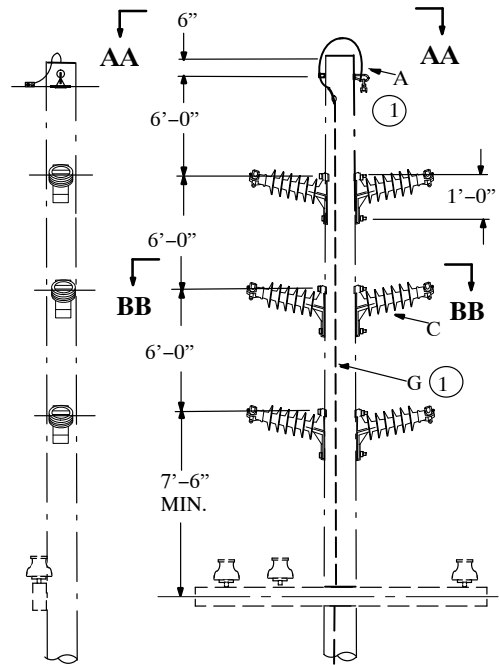
FACE OF POLE



SECTION AA-AA



SECTION BB-BB



04

NOTES:

1. Factory (internal) installed pole ground in quadrant B1. See DCS 12 00 10 12 for grounding detail.
2. See DCS 02 00 04 04 and DCS 02 00 04 05 for proper conductor tension, depth, and pole rake based on line angle.

	Std./Stk. No.	Description	03 69 52 **	03	04
@	A	06 00 11 04 Static Support w/Suspension Clamp		1	1
@	B	06 69 03 03 Insulator, 69kV Horz, Post, Single Polymer w/Trunn Clamps		3	
		06 69 03 01 Insulator, 69kV Horz, Post, Single Polymer w/Susp. Clamps		3	
@	C	06 69 03 04 Insulator, 69kV Horz, Post, Double Polymer w/Trunn. Clamps			3
		06 69 03 02 Insulator, 69kV Horz, Post, Double Polymer w/Susp. Clamps			3
@	D	SC*W Clamp, Suspension, Static wire		1	1
@	E	TC*W Clamp, Trunn., Angle, Conductor		3	6
		SC*W Clamp, Suspension, Angle, Conductor		3	6
@	F	02 20 05 12 Backfill and Reinforcement		1	1
	G	12 00 10 12 Grounding Unit		1	1