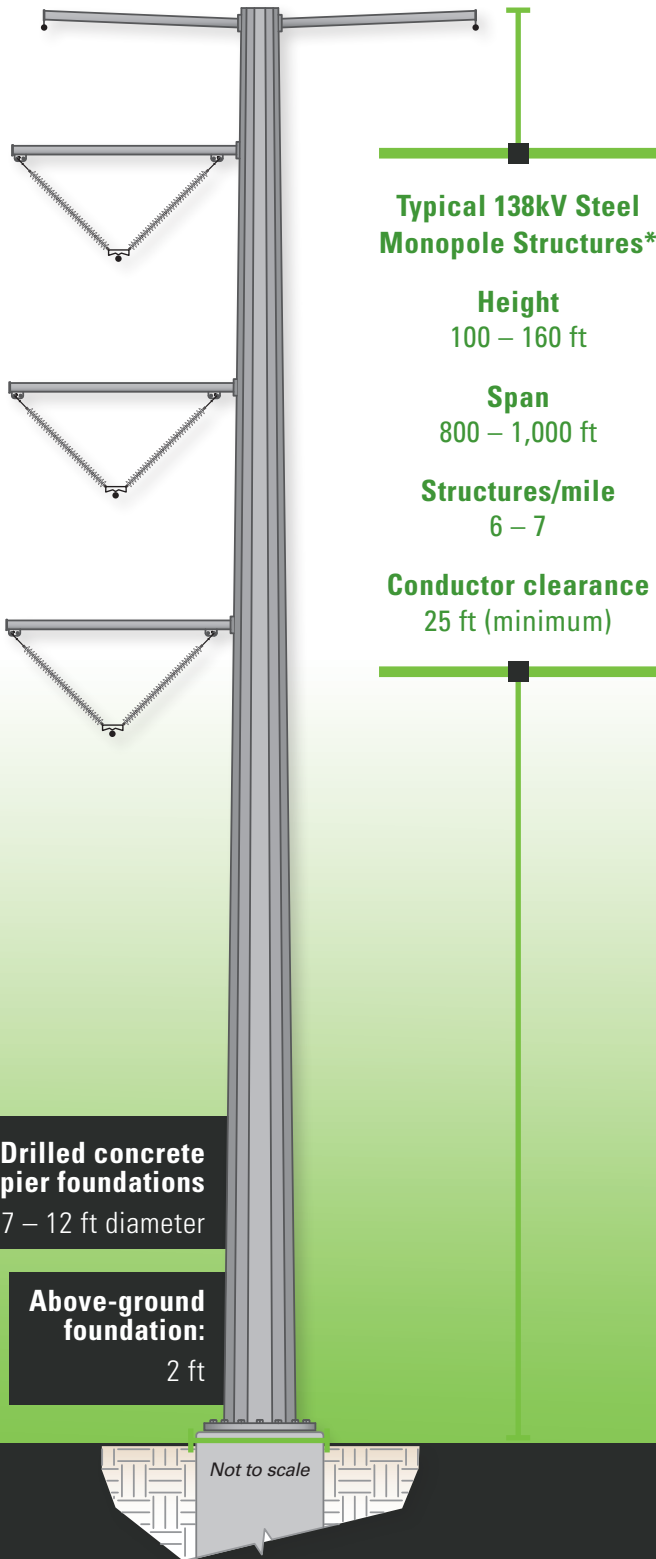


Limestone Ridge Project

Ameren Transmission Company of Illinois (ATXI), in collaboration with Wabash Valley Power Alliance (WVPA), Citizens Electric Corporation and Ameren Missouri, is proposing to construct a new, approximately 15-mile 138 kV transmission line and state-of-the-art substations to improve energy reliability for local communities in Southeast Missouri. The new line will connect two new substations in Perry and Cape Girardeau Counties. Our goal is to have this project completed and bringing project benefits to the community by 2023.



PROJECT BENEFITS



Improve energy reliability for local homes and businesses



Provide additional energy support to local manufacturing facilities



Support continued area economic growth

ANTICIPATED SCHEDULE

2020

- Collect data
- Gather public input
- Develop routes

2021

- Engineering & permitting
- File for Certificate from PSC
- PSC review process

2022

- Engineering & permitting
- Field surveys
- Real estate acquisitions
- Preconstruction activities
- Substation construction

2023

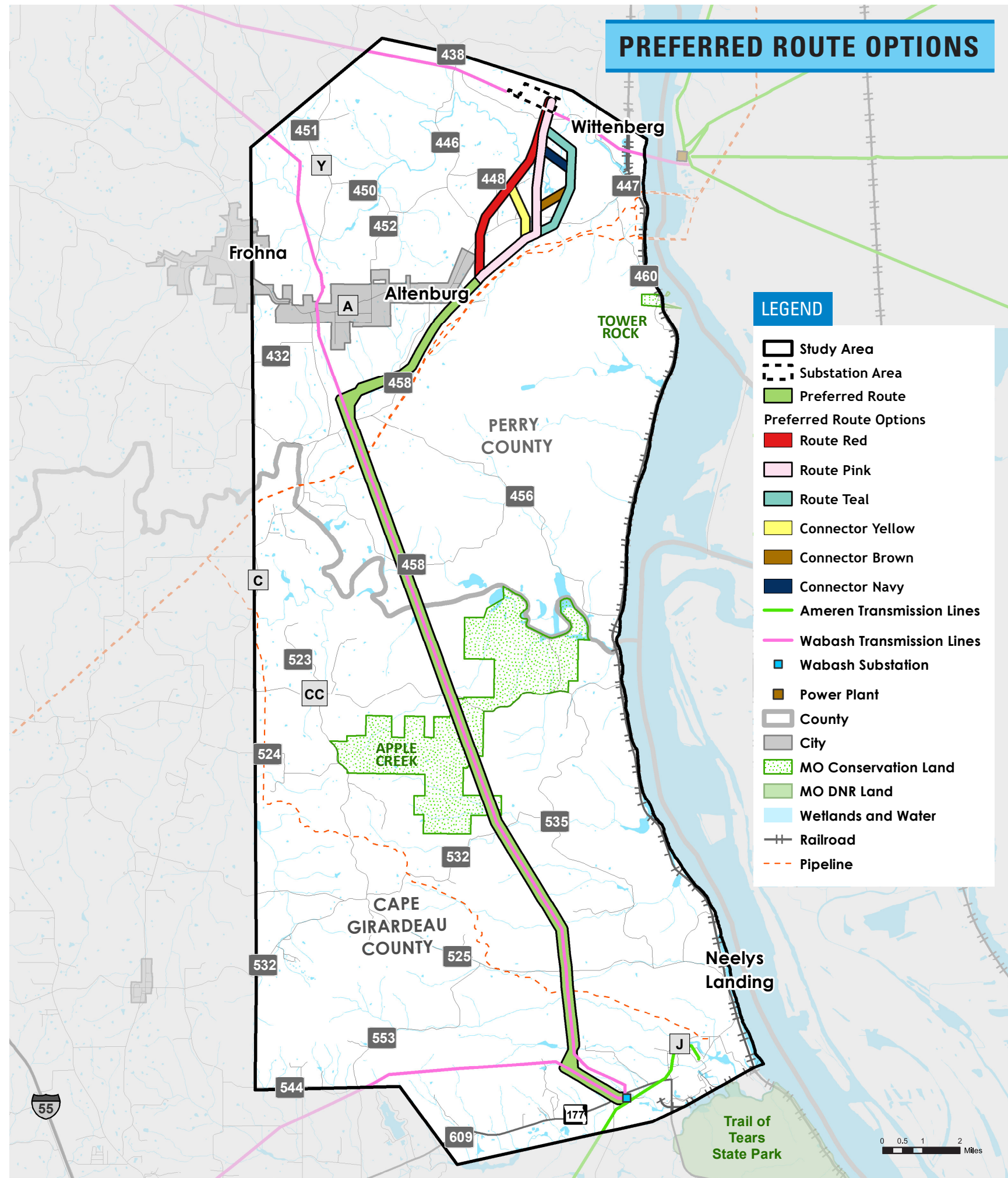
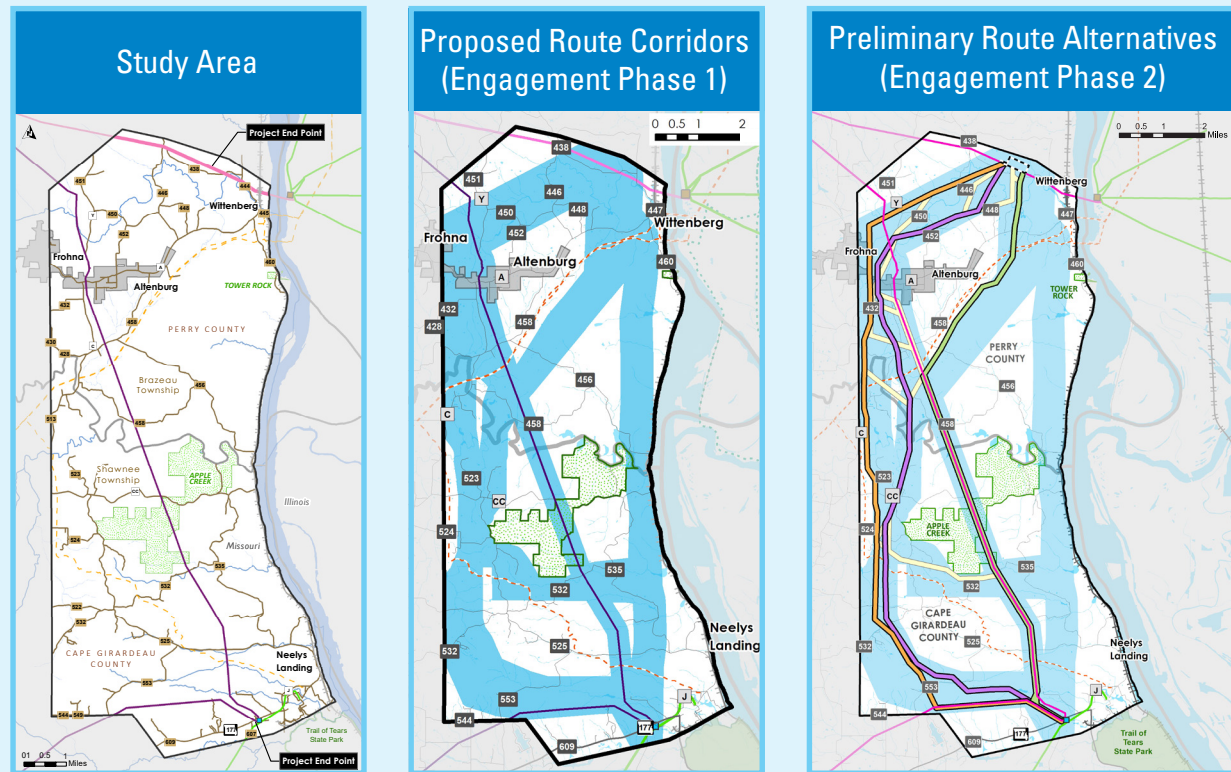
- Construction
- Project in-service (December)

Easement Width 125 ft

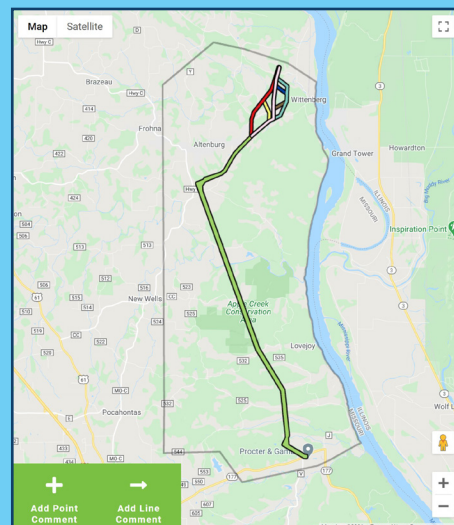
**138kV with the potential of a future 345kV circuit*

ROUTING PROGRESSION

The goal of the routing process is maximize Opportunities while understanding and minimizing impacts to Sensitivities and adhering to Technical Guidelines and Statutory Requirements. We appreciate the active participation and input community members have provided during the phase 1 engagement of the Proposed Route Corridors in August 2020 and the phase 2 engagement of the Preliminary Route Alternatives in October 2020. All input received was reviewed and considered during the development of the Preferred Route Options.



VISIT OUR WEBSITE TO VIEW AND ADD A COMMENT TO OUR ONLINE PROJECT MAP.



HOW TO TIPS:

- Type the following link into your search engine: limestoneridgeresources.com/interactivemap.html
- Click the green "add comment" button
- Use your mouse to navigate to a point on the map in the area of your comment
- Complete the text box
- Click submit

FREQUENTLY ASKED QUESTIONS

? Why is the Limestone Ridge Project needed in Southeast Missouri?

Communities located in Citizens Electric's southeast service territory are currently supported by a 161 kV Ameren Missouri transmission line. With increased energy use over the past several years, continuing to rely on this sole transmission source in the event of a power outage would result in extended restoration times and community-wide impacts. The Limestone Ridge Project will provide an additional source of transmission supply to create a stronger and redundant transmission network. By providing multiple pathways of energy, this new 138 kV transmission line and expanded substations will improve grid reliability and reduce the existing outage risks to homes, businesses and communities of Southeast Missouri.

? Why can't you pause on this project until COVID is over?

Energy resiliency is about making sure communities have a strong and regular supply of electricity in the event of a power failure. With a sole transmission line supplying portions of the project area and an increase of energy usage during the past several years, Southeast Missouri's existing and future grid needs an additional transmission line to ensure homes and businesses have this critical energy resiliency. Another transmission line is needed today to supply a new path of energy and reduce the outage risks and impacts to communities.

? Why is the line proposed in Missouri instead of Illinois?

The Limestone Ridge Project is not being proposed in Illinois due to several factors including:



The existing river crossings in the area are not capable of supporting a new transmission circuit. Rebuilding those crossings, or constructing and maintaining new crossings, would be very expensive.



The project benefits communities located in Missouri. It is fair for these facilities that create these benefits to be located in Missouri.



Developing a route in Illinois would pose its own challenges as most of the land adjacent to the river is also forested and/or within a floodplain.


? Why aren't you having any in-person meetings?

The safety and health of all communities and customers is our Limestone Ridge Project Team's top priority. Due to Perry and Cape Girardeau Counties' current COVID-19 risk levels and based upon the state of Missouri's community guidance, we're providing various no-contact opportunities to collect feedback from the public and share information about the project. To minimize public health risks and in accordance with Missouri's COVID recommendations, our team is conducting meetings to speak with landowners directly via conference calls, virtual open houses and telephone public meetings.

CONNECT WITH THE PROJECT TEAM

@ LimestoneRidgeProject@ameren.com

 LimestoneRidgeProject.com

 573.232.3003