

# Ameren Champaign MGP - Fifth Street

Weekly Air Monitoring Report

7 February 2022

Project No.: 0529307

## CONTENTS

1. INTRODUCTION .....	2
2. SUMMARY .....	2

**APPENDIX A COMPLETE PRELIMINARY DATA RECORD**

**APPENDIX B COMPLETE PRELIMINARY LAB RESULT DATA**

### List of Tables

Table 1 Reporting Period Air Monitoring Summary .....	3
---	---

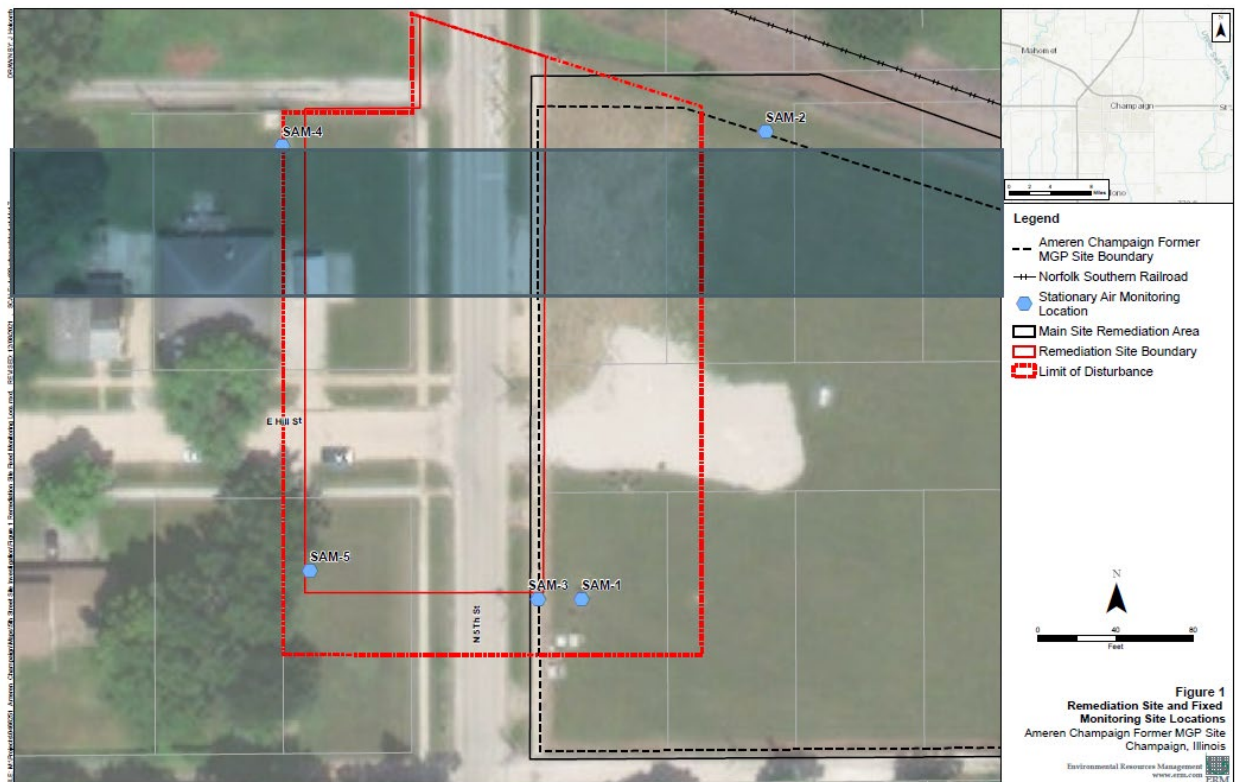
### List of Figures

Figure 1: Ameren Champaign 5 <sup>th</sup> Street - Monitoring Site Locations .....	2
Figure 2: PM <sub>10</sub> Concentrations.....	4

## 1. INTRODUCTION

Environmental Resources Management, Inc. (ERM) installed five stationary air monitors (SAMs) at four locations around the perimeter of the remediation site to monitor dust levels (PM<sub>10</sub>), volatile organic compounds (VOCs), and semi-volatile organic compounds (SVOCs) produced by the excavation. SAMs 1 and 3 were collocated in the southeast corner to provide duplicate measurements for quality control purposes. A meteorological monitoring station was installed to collect wind speed and direction, temperature, and barometric pressure to document atmospheric conditions and to support interpretation of the air quality data. A map showing the monitoring network layout is presented in Figure 1.

**Figure 1: Ameren Champaign 5<sup>th</sup> Street - Monitoring Site Locations**



This weekly summary presents the real-time ambient air quality and meteorological data collected from January 26, 2022 through February 1, 2022. The laboratory results were collected from January 12, 2022 through January 21, 2022. Both periods are representative of ongoing remedial efforts.

ERM used health effects data to establish maximum acceptable exposure levels for each of the constituents of concern (COC). These were used to set action levels for the monitoring compounds.

## 2. SUMMARY

The reporting period covers the initial remediation operational phase. No parameters exceeded their corresponding designated action levels over the reporting period. This indicates that there was no significant adverse impact on local air quality. Since there were no exceedances of the action or maximum acceptable exposure levels, there was no need to curtail remediation activities or enhance emission control measures. Table 1 presents a summary of the air quality monitoring results for the reporting period.

**Table 1 Reporting Period Air Monitoring Summary<sup>1</sup>**

CONSTITUENTS OF CONCERN	MONITORING PERIOD	NUMBER OF ACTION LEVEL OR ACCEPTABLE EXPOSURE LEVEL EXCEEDANCES	MAXIMUM MEASURED CONCENTRATION	ACTION LEVEL OR ACCEPTABLE EXPOSURE LEVEL
Inhalable Particulate Matter (15-min average, µg/m <sup>3</sup> )	1/26/2022 – 2/1/2022	0	48	360
VOC (1-minute average, µg/m <sup>3</sup> )	1/26/2022 – 2/1/2022	0	0.3	156.7
Benzene, Real-time GC (1-minute average µg/m <sup>3</sup> )	1/26/2022 – 2/1/2022	0	NM	156.7
Styrene, Method 325B (14 day sample period, µg/m <sup>3</sup> )	No results received this reporting period.			205,000
Benzene, Method 325B (14 day sample period, µg/m <sup>3</sup> )	No results received this reporting period.			16.5
Toluene, Method 325B (14 day sample period, µg/m <sup>3</sup> )	No results received this reporting period.			23,400
Xylenes (total), Method 325B (14 day sample period, µg/m <sup>3</sup> )	No results received this reporting period.			41,000
Ethylbenzene, Method 325B (14 day sample period, µg/m <sup>3</sup> )	No results received this reporting period.			59,400
2-methylnaphthalene, Method TO-13A (3 day sample period, µg/m <sup>3</sup> )	1/12/2022 – 1/21/2022	0	3.9	820
Acenaphthene, Method TO-13A (3 day sample period, µg/m <sup>3</sup> )	1/12/2022 – 1/21/2022	0	ND	12,300
Acenaphthylene, Method TO-13A (3 day sample period, µg/m <sup>3</sup> )	1/12/2022 – 1/21/2022	0	ND	615
Anthracene, Method TO-13A (3 day sample period, µg/m <sup>3</sup> )	1/12/2022 – 1/21/2022	0	ND	615
Benzo(a)anthracene, Method TO-13A (3 day sample period, µg/m <sup>3</sup> )	1/12/2022 – 1/21/2022	0	ND	1.54
Benzo(a)pyrene, Method TO-13A (3 day sample period, µg/m <sup>3</sup> )	1/12/2022 – 1/21/2022	0	ND	0.154
Benzo(k)fluoranthene, Method TO-13A (3 day sample period, µg/m <sup>3</sup> )	1/12/2022 – 1/21/2022	0	ND	15.4
Benzo(b)fluoranthene, Method TO-13A (3 day sample period, µg/m <sup>3</sup> )	1/12/2022 – 1/21/2022	0	ND	15.4
Chrysene, Method TO-13A (3 day sample period, µg/m <sup>3</sup> )	1/12/2022 – 1/21/2022	0	ND	154
Dibenzo(a,h)anthracene, Method TO-13A (3 day sample period, µg/m <sup>3</sup> )	1/12/2022 – 1/21/2022	0	ND	0.154

CONSTITUENTS OF CONCERN	MONITORING PERIOD	NUMBER OF ACTION LEVEL OR ACCEPTABLE EXPOSURE LEVEL EXCEEDANCES	MAXIMUM MEASURED CONCENTRATION	ACTION LEVEL OR ACCEPTABLE EXPOSURE LEVEL
Fluoranthene, Method TO-13A (3 day sample period, $\mu\text{g}/\text{m}^3$ )	1/12/2022 – 1/21/2022	0	ND	8,200
Fluorene, Method TO-13A (3 day sample period, $\mu\text{g}/\text{m}^3$ )	1/12/2022 – 1/21/2022	0	ND	8,200
Ideno(1,2,3-cd)pyrene, Method TO-13A (3 day sample period, $\mu\text{g}/\text{m}^3$ )	1/12/2022 – 1/21/2022	0	ND	1.54
Naphthalene, Method TO-13A (3 day sample period, $\mu\text{g}/\text{m}^3$ )	1/12/2022 – 1/21/2022	0	2.5	176
Phenanthrene, Method TO-13A (3 day sample period, $\mu\text{g}/\text{m}^3$ )	1/12/2022 – 1/21/2022	0	ND	6,150
Pyrene, Method TO-13A (3 day sample period, $\mu\text{g}/\text{m}^3$ )	1/12/2022 – 1/21/2022	0	ND	6,150

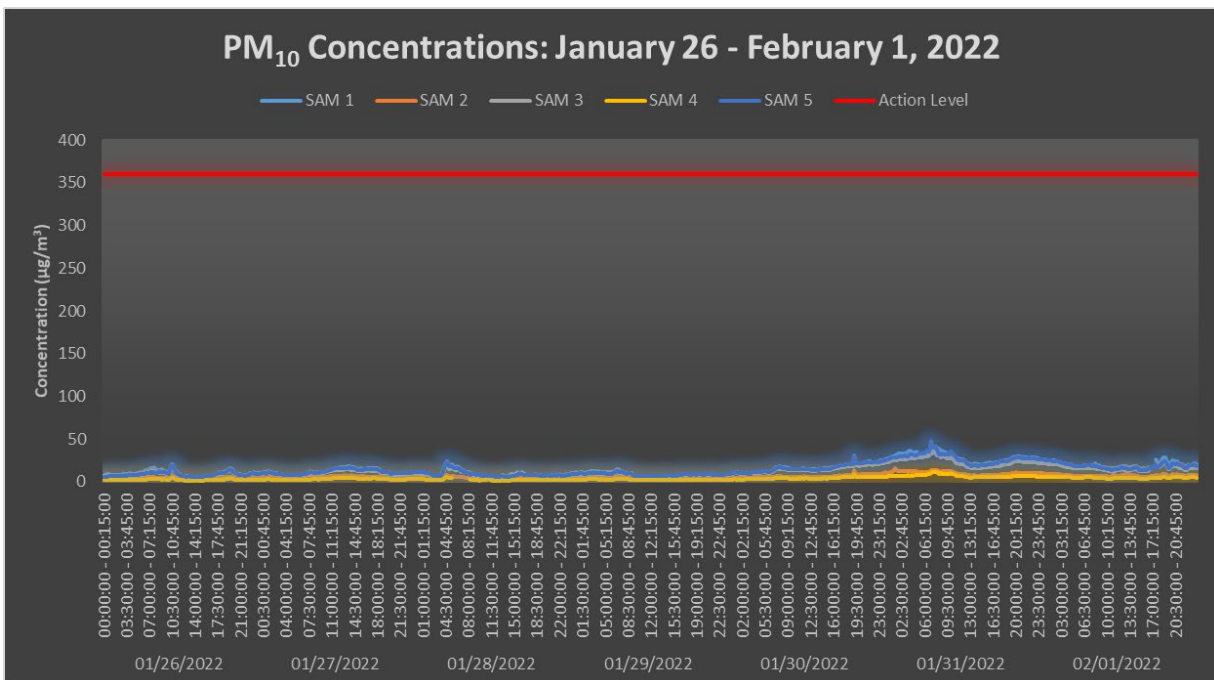
<sup>1</sup> Data presented have yet to be fully quality-assured; final values may vary of these preliminary results once all quality control measures have been applied.

NM = No measurements (benzene-specific measurements only made with portable gas chromatograph, in response to VOC exceedance)

ND = Not detected (concentrations below laboratory minimum detection limits)

The preliminary (not fully quality-assured) data record for the reporting period is contained in Appendix A.  $\text{PM}_{10}$  concentrations for the week are presented in Figure 2.

**Figure 2:  $\text{PM}_{10}$  Concentrations**



**APPENDIX A      COMPLETE PRELIMINARY DATA RECORD**



Appendix A: Complete Preliminary Data Record

Date	Timestamp	SAM 1	SAM 2	SAM 3	SAM 4	SAM 5	Meteorological Station				
		Average Conc. [µg/m <sup>3</sup> ]	Average Conc. [µg/m <sup>3</sup> ]	Average Conc. [µg/m <sup>3</sup> ]	Average Conc. [µg/m <sup>3</sup> ]	Average Conc. [µg/m <sup>3</sup> ]	Wind Speed [mph]	Wind Direction [degrees]	Air Temp. [° Celcius]	Relative Humidity [%]	Barometric Pressure [mb]
1/26/2022	00:00:00 - 00:15:00	7	3	6	2	6	2.1	333	-15.5	66	1004.9
1/26/2022	00:15:00 - 00:30:00	7	3	6	2	6	2.1	329	-15.7	66	1005.0
1/26/2022	00:30:00 - 00:45:00	9	3	7	2	6	1.6	334	-15.9	68	1005.0
1/26/2022	00:45:00 - 01:00:00	9	3	7	2	6	2.4	327	-16.1	68	1005.0
1/26/2022	01:00:00 - 01:15:00	8	3	7	2	7	2.9	330	-16.3	68	1005.1
1/26/2022	01:15:00 - 01:30:00	8	3	7	2	7	2.0	324	-16.5	69	1005.1
1/26/2022	01:30:00 - 01:45:00	8	4	6	2	7	1.6	316	-16.6	70	1005.3
1/26/2022	01:45:00 - 02:00:00	8	3	6	2	7	2.1	324	-16.8	71	1005.5
1/26/2022	02:00:00 - 02:15:00	8	3	6	2	7	1.9	296	-16.9	72	1005.7
1/26/2022	02:15:00 - 02:30:00	8	3	6	2	7	2.0	314	-17.0	72	1005.7
1/26/2022	02:30:00 - 02:45:00	8	4	7	2	7	1.6	310	-17.2	73	1005.9
1/26/2022	02:45:00 - 03:00:00	8	4	7	2	7	1.7	308	-17.3	73	1005.9
1/26/2022	03:00:00 - 03:15:00	9	4	7	2	7	2.0	324	-17.4	73	1005.9
1/26/2022	03:15:00 - 03:30:00	8	4	7	2	7	1.7	315	-17.4	73	1005.9
1/26/2022	03:30:00 - 03:45:00	8	4	7	2	7	1.9	317	-17.5	73	1005.9
1/26/2022	03:45:00 - 04:00:00	9	4	7	2	8	1.7	315	-17.6	74	1006.0
1/26/2022	04:00:00 - 04:15:00	10	4	8	2	8	1.5	316	-17.7	74	1006.0
1/26/2022	04:15:00 - 04:30:00	9	4	7	2	8	1.6	300	-17.8	74	1006.1
1/26/2022	04:30:00 - 04:45:00	9	5	7	2	8	1.6	295	-17.9	75	1006.1
1/26/2022	04:45:00 - 05:00:00	9	5	7	2	8	1.5	297	-18.0	75	1006.2
1/26/2022	05:00:00 - 05:15:00	9	5	7	2	8	1.5	297	-18.1	75	1006.4
1/26/2022	05:15:00 - 05:30:00	10	5	8	2	8	1.5	299	-18.1	75	1006.6
1/26/2022	05:30:00 - 05:45:00	10	5	8	2	9	1.4	300	-18.2	75	1006.7
1/26/2022	05:45:00 - 06:00:00	11	4	8	2	9	1.1	308	-18.2	75	1006.8
1/26/2022	06:00:00 - 06:15:00	11	4	8	2	9	1.2	314	-18.3	75	1007.0
1/26/2022	06:15:00 - 06:30:00	13	4	9	2	9	1.1	304	-18.4	75	1007.1
1/26/2022	06:30:00 - 06:45:00	13	5	10	2	10	1.5	305	-18.4	75	1007.1
1/26/2022	06:45:00 - 07:00:00	13	5	9	3	11	1.2	302	-18.4	75	1007.1
1/26/2022	07:00:00 - 07:15:00	15	5	11	3	10	1.1	306	-18.4	75	1007.1
1/26/2022	07:15:00 - 07:30:00	16	5	12	3	11	1.7	318	-18.3	73	1007.1
1/26/2022	07:30:00 - 07:45:00	16	5	12	3	11	1.1	291	-18.0	73	1007.0
1/26/2022	07:45:00 - 08:00:00	17	5	13	3	11	1.2	316	-17.6	71	1007.0
1/26/2022	08:00:00 - 08:15:00	14	5	10	3	10	0.7	306	-17.4	69	1007.1
1/26/2022	08:15:00 - 08:30:00	13	5	10	3	11	0.8	318	-17.3	69	1007.1
1/26/2022	08:30:00 - 08:45:00	14	4	11	3	12	0.7	21	-16.7	67	1007.1
1/26/2022	08:45:00 - 09:00:00	13	4	10	3	11	0.6	66	-16.1	65	1007.1
1/26/2022	09:00:00 - 09:15:00	15	4	11	3	11	0.5	8	-15.6	63	1007.0
1/26/2022	09:15:00 - 09:30:00	12	5	10	3	11	0.9	218	-14.9	61	1006.8
1/26/2022	09:30:00 - 09:45:00	12	5	10	3	11	0.3	239	-14.4	59	1006.7
1/26/2022	09:45:00 - 10:00:00	11	4	9	2	10	1.1	222	-13.7	55	1006.5
1/26/2022	10:00:00 - 10:15:00	10	4	9	2	9	0.9	228	-13.2	53	1006.5
1/26/2022	10:15:00 - 10:30:00	13	5	11	3	13	0.8	228	-12.7	52	1006.3
1/26/2022	10:30:00 - 10:45:00	20	7	17	5	19	0.9	229	-12.4	51	1006.2
1/26/2022	10:45:00 - 11:00:00	19	7	15	4	19	0.7	204	-11.6	48	1006.0
1/26/2022	11:00:00 - 11:15:00	14	5	12	3	13	0.6	238	-11.3	47	1005.7
1/26/2022	11:15:00 - 11:30:00	11	4	10	2	10	0.7	255	-11.0	47	1005.2
1/26/2022	11:30:00 - 11:45:00	9	4	9	2	9	0.9	231	-10.6	48	1004.9
1/26/2022	11:45:00 - 12:00:00	9	3	8	2	8	0.5	232	-9.9	46	1004.5
1/26/2022	12:00:00 - 12:15:00	7	3	7	2	7	1.0	221	-9.6	44	1004.1
1/26/2022	12:15:00 - 12:30:00	6	3	7	2	6	1.3	170	-9.3	44	1003.7
1/26/2022	12:30:00 - 12:45:00	5	3	6	1	6	1.4	207	-8.9	42	1003.5
1/26/2022	12:45:00 - 13:00:00	6	3	6	1	6	1.3	224	-8.4	42	1003.2
1/26/2022	13:00:00 - 13:15:00	5	3	6	1	6	1.2	208	-8.0	42	1003.0
1/26/2022	13:15:00 - 13:30:00	5	3	6	1	7	1.0	231	-7.5	40	1002.8
1/26/2022	13:30:00 - 13:45:00	5	3	6	1	5	1.4	228	-7.6	40	1002.6
1/26/2022	13:45:00 - 14:00:00	4	3	5	1	5	1.5	213	-7.1	39	1002.4
1/26/2022	14:00:00 - 14:15:00	5	3	5	1	5	1.2	196	-6.9	39	1002.0
1/26/2022	14:15:00 - 14:30:00	5	3	6	2	5	1.4	186	-6.6	38	1001.9
1/26/2022	14:30:00 - 14:45:00	5	3	6	1	6	1.4	230	-6.5	38	1001.9
1/26/2022	14:45:00 - 15:00:00	4	3	5	1	5	1.8	226	-6.3	37	1001.9
1/26/2022	15:00:00 - 15:15:00	4	3	5	1	5	1.6	192	-6.3	37	1001.7
1/26/2022	15:15:00 - 15:30:00	4	3	5	1	6	1.5	203	-6.1	37	1001.5

Appendix A: Complete Preliminary Data Record

Date	Timestamp	SAM 1	SAM 2	SAM 3	SAM 4	SAM 5	Meteorological Station				
		Average Conc. [ $\mu\text{g}/\text{m}^3$ ]	Average Conc. [ $\mu\text{g}/\text{m}^3$ ]	Average Conc. [ $\mu\text{g}/\text{m}^3$ ]	Average Conc. [ $\mu\text{g}/\text{m}^3$ ]	Average Conc. [ $\mu\text{g}/\text{m}^3$ ]	Wind Speed [mph]	Wind Direction [degrees]	Air Temp. [ $^{\circ}\text{Celsius}$ ]	Relative Humidity [%]	Barometric Pressure [mb]
1/26/2022	15:30:00 - 15:45:00	7	3	7	2	6	1.3	203	-6.6	38	1001.5
1/26/2022	15:45:00 - 16:00:00	6	3	6	2	6	1.5	188	-6.8	39	1001.4
1/26/2022	16:00:00 - 16:15:00	6	3	7	2	7	2.1	206	-7.0	40	1001.2
1/26/2022	16:15:00 - 16:30:00	6	3	6	2	7	2.1	204	-7.1	41	1001.1
1/26/2022	16:30:00 - 16:45:00	6	3	7	2	7	1.9	204	-7.2	41	1001.1
1/26/2022	16:45:00 - 17:00:00	7	3	7	2	7	1.8	196	-7.4	42	1001.0
1/26/2022	17:00:00 - 17:15:00	8	4	8	2	8	2.0	203	-7.6	43	1000.9
1/26/2022	17:15:00 - 17:30:00	9	4	8	2	9	1.9	208	-7.7	45	1000.9
1/26/2022	17:30:00 - 17:45:00	10	4	9	2	10	1.5	200	-7.9	46	1000.9
1/26/2022	17:45:00 - 18:00:00	11	5	10	2	10	1.8	200	-7.9	47	1000.8
1/26/2022	18:00:00 - 18:15:00	10	4	9	2	10	1.7	196	-8.1	48	1001.1
1/26/2022	18:15:00 - 18:30:00	11	4	9	2	10	1.3	196	-8.3	49	1001.0
1/26/2022	18:30:00 - 18:45:00	11	5	10	2	11	1.3	190	-8.4	49	1001.0
1/26/2022	18:45:00 - 19:00:00	12	5	11	3	12	1.3	189	-8.7	50	1001.0
1/26/2022	19:00:00 - 19:15:00	13	5	11	3	12	1.5	194	-8.7	51	1000.9
1/26/2022	19:15:00 - 19:30:00	15	6	12	3	14	1.4	201	-8.7	51	1000.7
1/26/2022	19:30:00 - 19:45:00	16	6	14	4	15	1.3	191	-8.8	51	1000.5
1/26/2022	19:45:00 - 20:00:00	15	6	12	3	14	1.4	190	-9.0	52	1000.3
1/26/2022	20:00:00 - 20:15:00	12	5	10	3	11	1.6	191	-9.2	52	1000.2
1/26/2022	20:15:00 - 20:30:00	10	4	9	2	10	1.6	191	-9.3	52	1000.0
1/26/2022	20:30:00 - 20:45:00	9	4	9	2	9	1.7	189	-9.4	53	999.8
1/26/2022	20:45:00 - 21:00:00	9	4	8	2	8	1.4	191	-9.6	55	999.6
1/26/2022	21:00:00 - 21:15:00	8	4	8	2	8	1.5	186	-9.7	56	999.4
1/26/2022	21:15:00 - 21:30:00	8	4	8	2	8	1.3	177	-9.9	57	999.3
1/26/2022	21:30:00 - 21:45:00	8	4	7	2	7	1.5	179	-10.1	58	999.3
1/26/2022	21:45:00 - 22:00:00	8	4	7	2	7	1.6	187	-10.2	58	999.3
1/26/2022	22:00:00 - 22:15:00	8	4	8	2	8	1.5	177	-10.1	59	999.1
1/26/2022	22:15:00 - 22:30:00	9	4	8	2	8	1.5	177	-9.9	59	999.0
1/26/2022	22:30:00 - 22:45:00	10	4	9	2	9	1.9	191	-9.7	59	998.9
1/26/2022	22:45:00 - 23:00:00	10	4	9	2	10	1.9	202	-9.4	58	998.7
1/26/2022	23:00:00 - 23:15:00	11	4	9	2	10	1.6	190	-9.4	59	998.5
1/26/2022	23:15:00 - 23:30:00	10	4	9	2	9	1.2	185	-9.7	61	998.3
1/26/2022	23:30:00 - 23:45:00	10	4	9	2	9	1.3	177	-10.0	62	998.2
1/26/2022	23:45:00 - 00:00:00	10	4	9	2	9	1.3	178	-10.2	64	998.0
1/27/2022	00:00:00 - 00:15:00	10	4	9	2	9	1.3	174	-10.3	65	997.8
1/27/2022	00:15:00 - 00:30:00	10	4	9	2	10	1.3	176	-10.4	66	997.7
1/27/2022	00:30:00 - 00:45:00	11	4	9	2	10	1.6	184	-10.1	65	997.6
1/27/2022	00:45:00 - 01:00:00	11	4	10	3	10	1.7	189	-9.8	65	997.4
1/27/2022	01:00:00 - 01:15:00	11	5	10	3	10	1.4	182	-9.9	66	997.2
1/27/2022	01:15:00 - 01:30:00	12	5	10	3	11	1.5	183	-9.8	66	997.0
1/27/2022	01:30:00 - 01:45:00	11	5	10	3	11	1.6	187	-9.3	66	996.8
1/27/2022	01:45:00 - 02:00:00	11	5	10	2	10	2.4	196	-8.5	63	996.6
1/27/2022	02:00:00 - 02:15:00	10	4	9	2	10	2.7	200	-8.1	60	996.2
1/27/2022	02:15:00 - 02:30:00	10	4	9	2	9	2.2	201	-7.9	60	996.2
1/27/2022	02:30:00 - 02:45:00	10	4	9	2	9	2.7	195	-7.6	60	996.1
1/27/2022	02:45:00 - 03:00:00	9	4	9	2	9	2.4	199	-7.2	58	996.0
1/27/2022	03:00:00 - 03:15:00	9	4	8	2	9	2.9	200	-6.9	57	995.8
1/27/2022	03:15:00 - 03:30:00	9	4	8	2	8	2.8	200	-6.5	56	995.7
1/27/2022	03:30:00 - 03:45:00	8	4	8	2	8	2.7	202	-6.2	55	995.6
1/27/2022	03:45:00 - 04:00:00	8	4	7	2	8	2.9	203	-6.0	54	995.4
1/27/2022	04:00:00 - 04:15:00	8	4	7	2	8	3.0	203	-5.8	53	995.4
1/27/2022	04:15:00 - 04:30:00	7	4	7	2	8	2.8	202	-5.6	56	995.4
1/27/2022	04:30:00 - 04:45:00	7	4	7	2	8	2.9	200	-5.5	60	995.3
1/27/2022	04:45:00 - 05:00:00	8	4	8	2	8	2.0	202	-5.3	56	995.2
1/27/2022	05:00:00 - 05:15:00	8	4	8	2	8	2.0	199	-5.1	54	995.2
1/27/2022	05:15:00 - 05:30:00	8	4	8	2	8	2.5	199	-5.1	54	995.0
1/27/2022	05:30:00 - 05:45:00	7	4	7	2	8	2.8	193	-5.0	54	994.8
1/27/2022	05:45:00 - 06:00:00	7	4	7	2	8	2.6	194	-5.0	56	994.9
1/27/2022	06:00:00 - 06:15:00	7	4	8	2	8	3.0	207	-4.9	63	995.0
1/27/2022	06:15:00 - 06:30:00	8	4	8	2	8	2.9	208	-4.9	68	995.0
1/27/2022	06:30:00 - 06:45:00	8	4	8	2	9	2.3	205	-5.2	76	995.0
1/27/2022	06:45:00 - 07:00:00	9	4	8	2	9	2.9	207	-5.2	84	995.0



Appendix A: Complete Preliminary Data Record

Date	Timestamp	SAM 1	SAM 2	SAM 3	SAM 4	SAM 5	Meteorological Station				
		Average Conc. [µg/m <sup>3</sup> ]	Average Conc. [µg/m <sup>3</sup> ]	Average Conc. [µg/m <sup>3</sup> ]	Average Conc. [µg/m <sup>3</sup> ]	Average Conc. [µg/m <sup>3</sup> ]	Wind Speed [mph]	Wind Direction [degrees]	Air Temp. [° Celsius]	Relative Humidity [%]	Barometric Pressure [mb]
1/27/2022	07:00:00 - 07:15:00	9	4	9	2	10	2.5	208	-5.0	89	995.0
1/27/2022	07:15:00 - 07:30:00	10	5	9	2	10	2.5	205	-5.1	90	994.9
1/27/2022	07:30:00 - 07:45:00	10	5	9	2	10	3.3	208	-5.1	91	995.0
1/27/2022	07:45:00 - 08:00:00	12	5	10	2	11	2.6	200	-5.1	92	995.1
1/27/2022	08:00:00 - 08:15:00	11	5	10	3	11	2.6	207	-5.0	92	995.1
1/27/2022	08:15:00 - 08:30:00	11	5	10	3	10	2.6	207	-4.8	92	995.2
1/27/2022	08:30:00 - 08:45:00	11	5	10	3	10	2.6	211	-4.5	93	995.2
1/27/2022	08:45:00 - 09:00:00	11	5	9	3	10	2.4	210	-4.0	93	995.2
1/27/2022	09:00:00 - 09:15:00	10	5	9	2	10	2.8	214	-3.6	92	995.2
1/27/2022	09:15:00 - 09:30:00	11	5	10	3	11	2.7	213	-3.3	91	995.1
1/27/2022	09:30:00 - 09:45:00	11	5	10	3	11	2.4	217	-3.2	91	995.1
1/27/2022	09:45:00 - 10:00:00	11	5	10	3	11	2.7	209	-3.0	91	995.1
1/27/2022	10:00:00 - 10:15:00	12	5	11	3	12	2.5	220	-2.6	90	995.2
1/27/2022	10:15:00 - 10:30:00	12	6	11	3	12	1.9	236	-2.5	90	995.3
1/27/2022	10:30:00 - 10:45:00	13	6	12	3	13	2.2	228	-2.5	89	995.3
1/27/2022	10:45:00 - 11:00:00	14	6	12	3	14	2.7	209	-2.5	89	995.2
1/27/2022	11:00:00 - 11:15:00	14	7	12	3	14	2.2	230	-2.3	89	995.0
1/27/2022	11:15:00 - 11:30:00	15	7	13	4	15	2.3	237	-1.9	88	994.7
1/27/2022	11:30:00 - 11:45:00	16	7	13	4	16	2.6	234	-1.7	87	994.5
1/27/2022	11:45:00 - 12:00:00	16	7	13	4	15	2.0	245	-1.4	87	994.3
1/27/2022	12:00:00 - 12:15:00	16	7	13	4	15	2.2	253	-1.0	86	994.2
1/27/2022	12:15:00 - 12:30:00	16	7	14	4	15	1.9	254	-0.9	86	994.1
1/27/2022	12:30:00 - 12:45:00	17	7	14	4	16	1.7	262	-0.8	86	994.0
1/27/2022	12:45:00 - 13:00:00	17	7	14	4	16	2.0	268	-0.6	84	993.9
1/27/2022	13:00:00 - 13:15:00	17	7	14	4	16	1.4	248	-0.2	84	993.7
1/27/2022	13:15:00 - 13:30:00	17	7	14	4	16	1.8	262	-0.2	84	993.6
1/27/2022	13:30:00 - 13:45:00	18	7	15	4	16	1.5	247	-0.1	84	993.5
1/27/2022	13:45:00 - 14:00:00	18	7	15	4	17	1.4	250	0.2	84	993.4
1/27/2022	14:00:00 - 14:15:00	17	8	14	4	16	1.5	249	0.6	83	993.4
1/27/2022	14:15:00 - 14:30:00	17	7	14	4	16	1.5	243	1.1	81	993.4
1/27/2022	14:30:00 - 14:45:00	17	7	14	4	15	1.9	254	1.0	81	993.5
1/27/2022	14:45:00 - 15:00:00	16	7	13	4	15	1.9	247	1.2	81	993.6
1/27/2022	15:00:00 - 15:15:00	15	6	12	3	14	2.5	267	1.6	79	993.7
1/27/2022	15:15:00 - 15:30:00	15	6	12	3	14	2.5	267	1.6	77	993.9
1/27/2022	15:30:00 - 15:45:00	16	6	13	3	14	2.1	262	1.8	77	994.0
1/27/2022	15:45:00 - 16:00:00	15	6	12	3	14	1.4	270	1.8	77	994.0
1/27/2022	16:00:00 - 16:15:00	15	6	12	3	14	1.6	278	1.9	76	994.2
1/27/2022	16:15:00 - 16:30:00	15	6	12	4	14	2.0	277	1.9	75	994.2
1/27/2022	16:30:00 - 16:45:00	16	6	13	4	15	2.1	281	2.0	74	994.4
1/27/2022	16:45:00 - 17:00:00	16	6	13	4	15	1.9	284	2.0	74	994.5
1/27/2022	17:00:00 - 17:15:00	15	6	13	3	15	1.4	284	1.9	73	994.6
1/27/2022	17:15:00 - 17:30:00	16	6	13	4	15	1.2	283	1.9	73	994.7
1/27/2022	17:30:00 - 17:45:00	15	6	13	4	15	1.4	280	1.7	73	994.8
1/27/2022	17:45:00 - 18:00:00	16	6	13	4	15	1.5	273	1.6	74	995.0
1/27/2022	18:00:00 - 18:15:00	15	6	13	4	15	1.5	280	1.6	73	995.3
1/27/2022	18:15:00 - 18:30:00	14	6	12	4	14	1.4	304	1.5	73	995.3
1/27/2022	18:30:00 - 18:45:00	12	6	11	3	12	1.6	306	1.4	72	995.4
1/27/2022	18:45:00 - 19:00:00	11	5	10	3	12	1.5	305	1.2	72	995.4
1/27/2022	19:00:00 - 19:15:00	11	5	10	3	11	1.5	296	1.1	71	995.5
1/27/2022	19:15:00 - 19:30:00	12	5	10	3	12	1.5	308	1.0	71	995.6
1/27/2022	19:30:00 - 19:45:00	11	5	10	3	11	1.8	322	0.9	71	995.8
1/27/2022	19:45:00 - 20:00:00	11	5	10	3	11	2.3	329	0.7	72	995.9
1/27/2022	20:00:00 - 20:15:00	9	4	8	2	9	2.6	328	0.3	74	995.8
1/27/2022	20:15:00 - 20:30:00	9	4	8	2	9	2.0	309	0.0	78	995.8
1/27/2022	20:30:00 - 20:45:00	9	4	8	2	10	1.9	315	0.0	77	995.8
1/27/2022	20:45:00 - 21:00:00	9	4	8	2	10	1.4	313	-0.1	77	995.8
1/27/2022	21:00:00 - 21:15:00	9	4	8	2	10	1.4	315	-0.2	77	995.8
1/27/2022	21:15:00 - 21:30:00	9	4	8	2	10	1.4	311	-0.2	77	995.7
1/27/2022	21:30:00 - 21:45:00	10	5	8	3	10	1.3	310	-0.3	77	995.7
1/27/2022	21:45:00 - 22:00:00	9	5	8	2	10	1.2	312	-0.3	77	995.7
1/27/2022	22:00:00 - 22:15:00	10	4	8	2	10	1.3	319	-0.4	78	995.8
1/27/2022	22:15:00 - 22:30:00	10	5	9	2	10	1.4	315	-0.4	78	995.9

Appendix A: Complete Preliminary Data Record

Date	Timestamp	SAM 1	SAM 2	SAM 3	SAM 4	SAM 5	Meteorological Station				
		Average Conc. [µg/m <sup>3</sup> ]	Average Conc. [µg/m <sup>3</sup> ]	Average Conc. [µg/m <sup>3</sup> ]	Average Conc. [µg/m <sup>3</sup> ]	Average Conc. [µg/m <sup>3</sup> ]	Wind Speed [mph]	Wind Direction [degrees]	Air Temp. [° Celsius]	Relative Humidity [%]	Barometric Pressure [mb]
1/27/2022	22:30:00 - 22:45:00	10	6	9	3	10	1.1	307	-0.5	78	996.0
1/27/2022	22:45:00 - 23:00:00	10	6	9	3	10	1.0	304	-0.6	79	996.0
1/27/2022	23:00:00 - 23:15:00	10	6	9	3	10	1.1	314	-0.6	79	996.0
1/27/2022	23:15:00 - 23:30:00	10	6	9	3	10	0.9	297	-0.6	79	996.0
1/27/2022	23:30:00 - 23:45:00	11	5	10	3	11	0.9	288	-0.6	79	996.0
1/27/2022	23:45:00 - 00:00:00	11	7	10	3	12	1.0	293	-0.6	79	995.9
1/28/2022	00:00:00 - 00:15:00	12	6	10	3	12	1.3	286	-0.6	79	995.7
1/28/2022	00:15:00 - 00:30:00	11	7	10	3	12	1.2	305	-0.7	79	995.6
1/28/2022	00:30:00 - 00:45:00	11	7	9	3	11	1.2	304	-0.7	79	995.5
1/28/2022	00:45:00 - 01:00:00	11	7	9	3	11	1.4	302	-0.7	80	995.4
1/28/2022	01:00:00 - 01:15:00	11	7	9	3	11	1.4	305	-0.8	80	995.3
1/28/2022	01:15:00 - 01:30:00	10	9	9	3	11	1.2	306	-0.9	81	995.3
1/28/2022	01:30:00 - 01:45:00	10	8	9	3	10	1.5	299	-1.0	82	995.3
1/28/2022	01:45:00 - 02:00:00	10	8	9	2	10	1.3	296	-1.2	82	995.3
1/28/2022	02:00:00 - 02:15:00	9	7	8	2	10	1.4	296	-1.3	83	995.3
1/28/2022	02:15:00 - 02:30:00	8	5	7	2	9	2.0	302	-1.3	84	995.2
1/28/2022	02:30:00 - 02:45:00	7	4	7	2	8	1.7	312	-1.3	84	995.2
1/28/2022	02:45:00 - 03:00:00	7	4	7	2	7	1.3	302	-1.3	85	995.0
1/28/2022	03:00:00 - 03:15:00	7	3	7	2	7	1.4	310	-1.4	85	994.9
1/28/2022	03:15:00 - 03:30:00	6	3	6	2	7	1.3	310	-1.4	86	994.9
1/28/2022	03:30:00 - 03:45:00	6	3	6	2	7	1.2	306	-1.5	86	994.8
1/28/2022	03:45:00 - 04:00:00	7	3	7	2	7	1.7	321	-1.6	87	994.8
1/28/2022	04:00:00 - 04:15:00	10	4	9	2	9	1.2	331	-1.7	87	994.7
1/28/2022	04:15:00 - 04:30:00	16	6	13	3	15	1.0	352	-1.8	88	994.7
1/28/2022	04:30:00 - 04:45:00	21	8	17	6	21	1.2	22	-2.1	89	994.9
1/28/2022	04:45:00 - 05:00:00	23	8	19	6	23	1.2	20	-2.2	89	995.0
1/28/2022	05:00:00 - 05:15:00	18	7	15	4	18	1.2	18	-2.5	88	995.2
1/28/2022	05:15:00 - 05:30:00	17	7	14	4	18	1.4	13	-2.6	88	995.2
1/28/2022	05:30:00 - 05:45:00	20	7	16	5	18	1.9	352	-2.8	88	995.3
1/28/2022	05:45:00 - 06:00:00	18	6	14	Offline	16	1.8	350	-3.2	88	995.4
1/28/2022	06:00:00 - 06:15:00	16	6	13	Offline	16	2.2	7	-3.5	88	995.4
1/28/2022	06:15:00 - 06:30:00	19	6	14	Offline	16	1.7	6	-3.7	89	995.5
1/28/2022	06:30:00 - 06:45:00	17	6	14	Offline	16	1.7	10	-3.7	89	995.7
1/28/2022	06:45:00 - 07:00:00	16	6	13	Offline	14	2.0	343	-3.9	89	995.8
1/28/2022	07:00:00 - 07:15:00	14	5	11	Offline	13	2.0	355	-4.4	89	995.9
1/28/2022	07:15:00 - 07:30:00	13	5	11	Offline	12	1.8	354	-4.8	89	996.1
1/28/2022	07:30:00 - 07:45:00	13	4	11	Offline	12	2.1	360	-5.1	89	996.1
1/28/2022	07:45:00 - 08:00:00	12	4	11	Offline	10	1.9	353	-5.1	90	996.2
1/28/2022	08:00:00 - 08:15:00	11	4	10	Offline	10	2.0	358	-5.1	90	996.3
1/28/2022	08:15:00 - 08:30:00	10	4	9	3	9	2.4	351	-5.4	91	996.5
1/28/2022	08:30:00 - 08:45:00	10	3	9	2	9	1.8	359	-5.6	92	996.6
1/28/2022	08:45:00 - 09:00:00	8	3	8	2	9	1.7	10	-5.9	93	996.7
1/28/2022	09:00:00 - 09:15:00	7	3	7	2	10	1.8	16	-5.9	93	996.8
1/28/2022	09:15:00 - 09:30:00	8	3	7	2	8	1.4	357	-5.6	93	996.9
1/28/2022	09:30:00 - 09:45:00	7	3	7	2	9	1.9	43	-5.3	94	997.0
1/28/2022	09:45:00 - 10:00:00	5	3	5	1	9	2.2	55	-4.8	92	997.2
1/28/2022	10:00:00 - 10:15:00	5	3	6	2	7	2.6	66	-4.9	91	997.4
1/28/2022	10:15:00 - 10:30:00	5	3	6	2	6	2.8	61	-5.0	90	997.5
1/28/2022	10:30:00 - 10:45:00	5	3	5	2	6	3.1	68	-4.9	88	997.6
1/28/2022	10:45:00 - 11:00:00	5	3	5	2	8	3.1	72	-4.9	88	997.6
1/28/2022	11:00:00 - 11:15:00	5	3	5	3	7	2.2	62	-4.9	88	997.7
1/28/2022	11:15:00 - 11:30:00	6	3	6	4	8	1.8	49	-5.2	90	997.8
1/28/2022	11:30:00 - 11:45:00	4	2	5	2	7	2.3	45	-5.3	89	997.8
1/28/2022	11:45:00 - 12:00:00	4	2	5	1	6	1.9	43	-5.0	86	997.7
1/28/2022	12:00:00 - 12:15:00	4	3	5	1	6	2.3	52	-5.1	86	997.7
1/28/2022	12:15:00 - 12:30:00	4	3	5	1	6	1.7	43	-5.1	87	997.8
1/28/2022	12:30:00 - 12:45:00	4	2	5	1	5	1.8	23	-5.3	86	997.8
1/28/2022	12:45:00 - 13:00:00	4	2	5	1	5	1.9	41	-5.1	81	997.8
1/28/2022	13:00:00 - 13:15:00	5	3	6	1	7	1.3	356	-5.1	82	997.8
1/28/2022	13:15:00 - 13:30:00	7	3	7	2	7	1.4	351	-5.1	86	997.7
1/28/2022	13:30:00 - 13:45:00	5	3	6	1	6	1.7	7	-4.8	79	997.7
1/28/2022	13:45:00 - 14:00:00	7	3	7	1	7	2.3	359	-4.3	75	997.7

Appendix A: Complete Preliminary Data Record

Date	Timestamp	SAM 1	SAM 2	SAM 3	SAM 4	SAM 5	Meteorological Station				
		Average Conc. [ $\mu\text{g}/\text{m}^3$ ]	Average Conc. [ $\mu\text{g}/\text{m}^3$ ]	Average Conc. [ $\mu\text{g}/\text{m}^3$ ]	Average Conc. [ $\mu\text{g}/\text{m}^3$ ]	Average Conc. [ $\mu\text{g}/\text{m}^3$ ]	Wind Speed [mph]	Wind Direction [degrees]	Air Temp. [ $^{\circ}\text{Celsius}$ ]	Relative Humidity [%]	Barometric Pressure [mb]
1/28/2022	14:00:00 - 14:15:00	5	3	6	1	6	1.8	356	-4.0	73	997.8
1/28/2022	14:15:00 - 14:30:00	7	2	7	1	6	2.1	359	-4.1	70	997.9
1/28/2022	14:30:00 - 14:45:00	9	3	8	2	7	2.5	332	-4.3	78	998.1
1/28/2022	14:45:00 - 15:00:00	9	3	8	2	7	2.3	339	-4.4	78	998.3
1/28/2022	15:00:00 - 15:15:00	8	3	8	2	7	2.3	336	-4.5	77	998.5
1/28/2022	15:15:00 - 15:30:00	9	3	9	2	7	2.4	327	-5.1	79	998.7
1/28/2022	15:30:00 - 15:45:00	11	3	10	2	8	2.2	338	-5.3	80	998.9
1/28/2022	15:45:00 - 16:00:00	10	4	10	2	10	2.0	330	-5.5	81	999.0
1/28/2022	16:00:00 - 16:15:00	10	4	9	2	8	2.4	321	-5.9	81	999.1
1/28/2022	16:15:00 - 16:30:00	11	4	10	2	9	2.1	322	-6.0	82	999.2
1/28/2022	16:30:00 - 16:45:00	9	4	9	2	8	2.0	323	-6.4	83	999.4
1/28/2022	16:45:00 - 17:00:00	9	4	8	2	8	2.0	318	-7.0	83	999.6
1/28/2022	17:00:00 - 17:15:00	8	4	8	2	8	1.8	321	-7.4	83	999.7
1/28/2022	17:15:00 - 17:30:00	8	4	8	2	8	1.9	326	-7.6	83	999.8
1/28/2022	17:30:00 - 17:45:00	8	4	8	2	8	1.2	320	-8.0	83	999.9
1/28/2022	17:45:00 - 18:00:00	8	4	8	2	8	1.3	315	-8.4	83	1000.1
1/28/2022	18:00:00 - 18:15:00	8	4	8	2	8	1.2	309	-8.8	83	1000.4
1/28/2022	18:15:00 - 18:30:00	8	4	8	2	8	1.1	285	-9.1	83	1000.5
1/28/2022	18:30:00 - 18:45:00	8	4	8	2	8	1.2	288	-9.4	83	1000.6
1/28/2022	18:45:00 - 19:00:00	8	4	7	2	8	1.5	281	-9.6	82	1000.8
1/28/2022	19:00:00 - 19:15:00	7	4	7	2	7	1.2	294	-9.9	80	1000.8
1/28/2022	19:15:00 - 19:30:00	7	3	7	2	7	1.2	287	-10.0	78	1000.9
1/28/2022	19:30:00 - 19:45:00	7	3	7	2	6	1.0	289	-10.2	77	1000.9
1/28/2022	19:45:00 - 20:00:00	7	3	7	2	7	1.2	303	-10.3	76	1001.0
1/28/2022	20:00:00 - 20:15:00	8	4	7	2	7	1.0	290	-10.5	76	1001.1
1/28/2022	20:15:00 - 20:30:00	8	4	7	2	7	1.2	295	-10.7	76	1001.1
1/28/2022	20:30:00 - 20:45:00	7	3	7	2	7	1.2	295	-10.8	75	1001.1
1/28/2022	20:45:00 - 21:00:00	7	4	7	2	7	1.1	288	-10.9	75	1001.2
1/28/2022	21:00:00 - 21:15:00	8	4	7	2	7	1.1	291	-11.1	75	1001.3
1/28/2022	21:15:00 - 21:30:00	8	4	7	2	8	0.9	294	-11.3	76	1001.3
1/28/2022	21:30:00 - 21:45:00	8	4	7	2	7	0.7	294	-11.4	76	1001.4
1/28/2022	21:45:00 - 22:00:00	9	4	8	2	9	0.5	268	-11.6	76	1001.3
1/28/2022	22:00:00 - 22:15:00	9	5	7	2	8	0.6	271	-11.9	76	1001.1
1/28/2022	22:15:00 - 22:30:00	8	6	7	2	7	0.8	251	-12.1	77	1001.0
1/28/2022	22:30:00 - 22:45:00	8	5	7	2	7	0.6	242	-12.3	77	1000.9
1/28/2022	22:45:00 - 23:00:00	8	4	7	2	7	0.4	233	-12.3	77	1000.7
1/28/2022	23:00:00 - 23:15:00	9	4	7	2	8	0.7	219	-12.7	78	1000.6
1/28/2022	23:15:00 - 23:30:00	8	4	7	2	8	0.9	218	-12.6	78	1000.6
1/28/2022	23:30:00 - 23:45:00	9	4	8	2	8	0.8	220	-12.8	79	1000.5
1/28/2022	23:45:00 - 00:00:00	10	4	8	2	9	0.7	224	-12.8	79	1000.5
1/29/2022	00:00:00 - 00:15:00	10	6	8	2	9	0.6	230	-13.0	80	1000.4
1/29/2022	00:15:00 - 00:30:00	9	7	8	2	8	0.7	235	-12.9	80	1000.3
1/29/2022	00:30:00 - 00:45:00	12	4	9	2	9	0.5	168	-13.4	80	1000.1
1/29/2022	00:45:00 - 01:00:00	10	5	8	2	9	0.7	233	-13.8	83	999.9
1/29/2022	01:00:00 - 01:15:00	11	5	8	2	10	0.9	225	-13.4	84	999.7
1/29/2022	01:15:00 - 01:30:00	11	8	8	2	10	0.7	222	-13.3	83	999.6
1/29/2022	01:30:00 - 01:45:00	11	6	8	2	10	0.6	236	-13.5	84	999.3
1/29/2022	01:45:00 - 02:00:00	10	5	8	2	9	0.6	257	-13.4	85	999.5
1/29/2022	02:00:00 - 02:15:00	10	5	8	2	9	0.6	260	-13.4	84	999.5
1/29/2022	02:15:00 - 02:30:00	11	6	9	3	10	0.8	243	-13.2	83	999.5
1/29/2022	02:30:00 - 02:45:00	12	5	10	3	10	0.5	266	-13.2	83	999.6
1/29/2022	02:45:00 - 03:00:00	12	6	10	3	11	0.5	255	-13.5	84	999.6
1/29/2022	03:00:00 - 03:15:00	12	6	10	3	10	0.6	221	-13.6	85	999.4
1/29/2022	03:15:00 - 03:30:00	13	5	10	3	11	0.6	165	-13.7	85	999.3
1/29/2022	03:30:00 - 03:45:00	12	5	9	3	10	0.8	180	-13.6	86	999.1
1/29/2022	03:45:00 - 04:00:00	11	5	9	3	10	0.8	209	-13.4	85	999.0
1/29/2022	04:00:00 - 04:15:00	12	8	9	3	10	1.0	212	-13.2	85	998.8
1/29/2022	04:15:00 - 04:30:00	11	5	9	2	10	1.2	205	-13.1	85	998.8
1/29/2022	04:30:00 - 04:45:00	12	5	9	3	10	1.2	205	-13.1	84	998.7
1/29/2022	04:45:00 - 05:00:00	11	5	9	2	10	1.0	219	-13.4	85	998.7
1/29/2022	05:00:00 - 05:15:00	11	4	9	2	10	1.1	212	-13.5	84	998.5
1/29/2022	05:15:00 - 05:30:00	11	4	9	2	9	1.0	221	-13.7	84	998.6

Appendix A: Complete Preliminary Data Record

Date	Timestamp	SAM 1	SAM 2	SAM 3	SAM 4	SAM 5	Meteorological Station				
		Average Conc. [ $\mu\text{g}/\text{m}^3$ ]	Average Conc. [ $\mu\text{g}/\text{m}^3$ ]	Average Conc. [ $\mu\text{g}/\text{m}^3$ ]	Average Conc. [ $\mu\text{g}/\text{m}^3$ ]	Average Conc. [ $\mu\text{g}/\text{m}^3$ ]	Wind Speed [mph]	Wind Direction [degrees]	Air Temp. [ $^{\circ}\text{Celsius}$ ]	Relative Humidity [%]	Barometric Pressure [mb]
1/29/2022	05:30:00 - 05:45:00	11	4	9	2	9	1.4	214	-13.8	84	998.8
1/29/2022	05:45:00 - 06:00:00	11	4	9	2	9	1.4	214	-14.1	83	998.8
1/29/2022	06:00:00 - 06:15:00	11	4	9	2	9	1.1	223	-14.0	84	998.7
1/29/2022	06:15:00 - 06:30:00	11	5	9	2	10	0.9	223	-14.0	85	998.9
1/29/2022	06:30:00 - 06:45:00	13	5	10	3	11	1.3	213	-13.9	85	999.0
1/29/2022	06:45:00 - 07:00:00	15	6	11	3	12	1.4	212	-13.8	85	998.7
1/29/2022	07:00:00 - 07:15:00	14	5	11	3	12	1.2	205	-13.7	85	998.5
1/29/2022	07:15:00 - 07:30:00	13	5	11	3	12	1.0	212	-13.7	85	998.5
1/29/2022	07:30:00 - 07:45:00	13	6	10	3	12	1.2	203	-13.1	83	998.2
1/29/2022	07:45:00 - 08:00:00	12	4	10	3	11	1.3	199	-12.1	79	998.0
1/29/2022	08:00:00 - 08:15:00	10	4	9	3	10	1.6	203	-11.6	77	997.8
1/29/2022	08:15:00 - 08:30:00	10	4	9	3	9	1.7	210	-11.2	75	997.8
1/29/2022	08:30:00 - 08:45:00	10	4	9	3	10	1.8	201	-10.7	74	997.8
1/29/2022	08:45:00 - 09:00:00	10	4	9	2	10	1.6	203	-10.1	73	997.8
1/29/2022	09:00:00 - 09:15:00	10	4	9	2	9	1.2	184	-8.8	70	997.5
1/29/2022	09:15:00 - 09:30:00	8	3	8	2	8	1.9	204	-8.4	68	997.3
1/29/2022	09:30:00 - 09:45:00	6	3	7	2	7	2.1	199	-8.0	65	997.2
1/29/2022	09:45:00 - 10:00:00	6	3	7	2	7	1.4	204	-7.2	63	997.2
1/29/2022	10:00:00 - 10:15:00	6	3	7	2	7	2.0	204	-7.2	62	997.0
1/29/2022	10:15:00 - 10:30:00	6	3	6	2	7	1.8	225	-7.0	61	997.0
1/29/2022	10:30:00 - 10:45:00	6	4	6	2	7	1.7	226	-6.5	60	996.8
1/29/2022	10:45:00 - 11:00:00	6	4	6	2	6	1.9	210	-6.5	60	996.7
1/29/2022	11:00:00 - 11:15:00	5	3	6	2	6	1.8	210	-6.2	58	996.2
1/29/2022	11:15:00 - 11:30:00	5	3	6	2	6	2.2	200	-6.2	57	995.8
1/29/2022	11:30:00 - 11:45:00	6	3	6	2	7	1.4	198	-5.9	58	995.5
1/29/2022	11:45:00 - 12:00:00	6	3	6	2	6	2.0	199	-5.7	56	995.2
1/29/2022	12:00:00 - 12:15:00	5	3	6	2	6	2.2	205	-5.5	57	994.8
1/29/2022	12:15:00 - 12:30:00	6	3	6	2	6	1.8	191	-5.4	57	994.6
1/29/2022	12:30:00 - 12:45:00	6	3	6	2	6	1.9	203	-5.8	60	994.1
1/29/2022	12:45:00 - 13:00:00	6	3	6	2	6	1.9	195	-5.3	60	993.7
1/29/2022	13:00:00 - 13:15:00	5	3	6	2	6	1.7	193	-5.3	58	993.5
1/29/2022	13:15:00 - 13:30:00	6	3	6	2	6	1.6	198	-5.1	59	993.1
1/29/2022	13:30:00 - 13:45:00	6	3	6	2	7	1.9	195	-5.0	58	992.8
1/29/2022	13:45:00 - 14:00:00	6	3	7	2	7	1.7	192	-4.9	58	992.3
1/29/2022	14:00:00 - 14:15:00	6	3	7	2	7	1.7	204	-4.6	57	991.8
1/29/2022	14:15:00 - 14:30:00	7	3	7	2	7	1.8	199	-4.2	57	991.2
1/29/2022	14:30:00 - 14:45:00	6	3	6	2	6	1.7	192	-3.8	56	990.7
1/29/2022	14:45:00 - 15:00:00	6	3	7	2	7	1.7	170	-3.8	57	990.5
1/29/2022	15:00:00 - 15:15:00	6	3	7	2	7	1.7	173	-3.8	57	990.5
1/29/2022	15:15:00 - 15:30:00	6	3	7	2	7	2.0	195	-3.8	57	990.5
1/29/2022	15:30:00 - 15:45:00	6	3	7	2	7	1.6	184	-4.0	58	990.4
1/29/2022	15:45:00 - 16:00:00	6	3	7	2	7	1.7	187	-4.0	59	990.0
1/29/2022	16:00:00 - 16:15:00	6	3	7	2	7	1.5	170	-4.1	59	989.8
1/29/2022	16:15:00 - 16:30:00	6	3	7	2	7	1.4	175	-4.1	59	990.0
1/29/2022	16:30:00 - 16:45:00	7	3	7	2	8	1.3	189	-4.1	60	989.8
1/29/2022	16:45:00 - 17:00:00	7	3	8	2	8	1.4	183	-4.4	62	989.5
1/29/2022	17:00:00 - 17:15:00	8	4	8	2	8	1.1	180	-4.7	64	989.7
1/29/2022	17:15:00 - 17:30:00	8	4	8	2	9	1.2	185	-4.7	66	989.8
1/29/2022	17:30:00 - 17:45:00	8	4	8	2	9	1.2	171	-4.7	67	989.5
1/29/2022	17:45:00 - 18:00:00	8	4	8	2	9	1.2	160	-4.7	69	989.3
1/29/2022	18:00:00 - 18:15:00	8	4	8	2	8	1.2	162	-4.8	69	989.0
1/29/2022	18:15:00 - 18:30:00	8	4	8	2	8	1.2	157	-4.8	69	988.7
1/29/2022	18:30:00 - 18:45:00	8	4	8	2	8	1.1	170	-4.7	69	988.7
1/29/2022	18:45:00 - 19:00:00	8	4	8	2	8	1.3	160	-4.8	70	988.5
1/29/2022	19:00:00 - 19:15:00	8	4	8	2	8	1.5	157	-4.9	70	988.5
1/29/2022	19:15:00 - 19:30:00	8	4	8	2	9	1.3	157	-4.9	70	988.5
1/29/2022	19:30:00 - 19:45:00	8	4	8	2	9	1.3	160	-4.8	70	988.3
1/29/2022	19:45:00 - 20:00:00	8	4	8	2	8	1.4	159	-4.7	70	988.2
1/29/2022	20:00:00 - 20:15:00	8	4	8	2	8	1.3	163	-4.6	70	987.9
1/29/2022	20:15:00 - 20:30:00	8	4	8	2	8	1.2	160	-4.6	70	987.6
1/29/2022	20:30:00 - 20:45:00	8	4	8	2	9	1.2	167	-4.6	71	987.5
1/29/2022	20:45:00 - 21:00:00	8	4	8	2	8	1.4	153	-4.6	71	987.2

Appendix A: Complete Preliminary Data Record

Date	Timestamp	SAM 1	SAM 2	SAM 3	SAM 4	SAM 5	Meteorological Station				
		Average Conc. [µg/m <sup>3</sup> ]	Average Conc. [µg/m <sup>3</sup> ]	Average Conc. [µg/m <sup>3</sup> ]	Average Conc. [µg/m <sup>3</sup> ]	Average Conc. [µg/m <sup>3</sup> ]	Wind Speed [mph]	Wind Direction [degrees]	Air Temp. [° Celsius]	Relative Humidity [%]	Barometric Pressure [mb]
1/29/2022	21:00:00 - 21:15:00	8	4	8	2	9	1.5	165	-4.6	71	986.8
1/29/2022	21:15:00 - 21:30:00	8	4	8	2	9	1.0	173	-4.6	72	986.6
1/29/2022	21:30:00 - 21:45:00	8	4	8	2	8	1.0	173	-4.7	72	986.3
1/29/2022	21:45:00 - 22:00:00	8	4	8	2	9	1.1	180	-4.5	72	985.9
1/29/2022	22:00:00 - 22:15:00	8	4	8	2	8	1.2	170	-4.5	71	985.4
1/29/2022	22:15:00 - 22:30:00	8	4	8	2	8	1.2	186	-4.4	71	985.2
1/29/2022	22:30:00 - 22:45:00	7	4	8	2	8	1.3	186	-4.4	71	985.1
1/29/2022	22:45:00 - 23:00:00	8	4	8	2	8	1.4	183	-4.2	71	985.0
1/29/2022	23:00:00 - 23:15:00	8	4	8	2	8	1.3	189	-4.0	70	985.0
1/29/2022	23:15:00 - 23:30:00	8	4	8	2	8	1.2	192	-4.0	70	984.8
1/29/2022	23:30:00 - 23:45:00	8	4	8	2	8	1.2	187	-4.1	71	984.6
1/29/2022	23:45:00 - 00:00:00	8	4	8	2	9	1.3	189	-4.1	71	984.5
1/30/2022	00:00:00 - 00:15:00	9	4	9	2	9	1.6	196	-4.0	71	984.3
1/30/2022	00:15:00 - 00:30:00	9	4	9	2	9	1.5	198	-3.9	71	984.0
1/30/2022	00:30:00 - 00:45:00	9	4	9	2	10	2.1	201	-3.7	71	983.7
1/30/2022	00:45:00 - 01:00:00	10	4	10	3	11	2.0	209	-3.8	72	983.5
1/30/2022	01:00:00 - 01:15:00	11	5	10	3	11	2.1	210	-3.8	73	983.3
1/30/2022	01:15:00 - 01:30:00	12	5	11	3	11	1.4	219	-4.1	75	983.3
1/30/2022	01:30:00 - 01:45:00	10	4	10	3	10	1.6	223	-4.2	75	983.0
1/30/2022	01:45:00 - 02:00:00	9	4	9	2	10	1.4	220	-4.4	75	983.0
1/30/2022	02:00:00 - 02:15:00	9	4	9	3	10	1.1	213	-4.7	76	982.9
1/30/2022	02:15:00 - 02:30:00	9	4	9	2	10	1.1	210	-4.8	77	982.8
1/30/2022	02:30:00 - 02:45:00	9	4	10	3	10	1.0	213	-5.0	78	982.7
1/30/2022	02:45:00 - 03:00:00	10	4	10	3	10	1.0	211	-5.1	79	982.6
1/30/2022	03:00:00 - 03:15:00	10	4	10	3	10	1.0	213	-5.0	79	982.4
1/30/2022	03:15:00 - 03:30:00	10	4	10	3	10	0.9	222	-5.0	80	982.3
1/30/2022	03:30:00 - 03:45:00	10	5	10	3	11	0.9	233	-5.1	80	982.3
1/30/2022	03:45:00 - 04:00:00	10	5	10	3	11	0.8	236	-5.0	80	982.3
1/30/2022	04:00:00 - 04:15:00	10	5	10	3	11	0.7	230	-5.2	80	982.3
1/30/2022	04:15:00 - 04:30:00	11	5	10	3	11	0.8	237	-5.5	81	982.2
1/30/2022	04:30:00 - 04:45:00	11	5	10	3	11	0.7	220	-5.7	81	982.2
1/30/2022	04:45:00 - 05:00:00	11	5	11	3	11	0.7	219	-5.9	82	982.4
1/30/2022	05:00:00 - 05:15:00	11	5	11	3	12	0.7	219	-6.1	83	982.4
1/30/2022	05:15:00 - 05:30:00	12	6	11	4	12	1.1	236	-5.6	81	982.5
1/30/2022	05:30:00 - 05:45:00	13	6	12	3	13	1.2	253	-5.6	80	982.7
1/30/2022	05:45:00 - 06:00:00	12	6	11	3	12	1.1	274	-5.8	80	983.1
1/30/2022	06:00:00 - 06:15:00	11	5	10	3	11	1.5	280	-6.0	80	983.3
1/30/2022	06:15:00 - 06:30:00	11	5	10	3	11	1.2	276	-6.3	80	983.4
1/30/2022	06:30:00 - 06:45:00	12	5	11	3	12	1.3	296	-6.6	81	983.8
1/30/2022	06:45:00 - 07:00:00	13	5	12	3	13	1.8	305	-6.4	82	984.4
1/30/2022	07:00:00 - 07:15:00	15	6	14	4	15	1.9	315	-6.2	83	984.8
1/30/2022	07:15:00 - 07:30:00	17	6	15	4	16	2.0	320	-6.1	84	985.0
1/30/2022	07:30:00 - 07:45:00	17	7	15	4	16	2.1	324	-6.0	83	985.3
1/30/2022	07:45:00 - 08:00:00	18	6	15	4	17	1.9	330	-5.9	83	985.6
1/30/2022	08:00:00 - 08:15:00	17	6	14	4	16	2.4	319	-5.9	82	985.7
1/30/2022	08:15:00 - 08:30:00	17	6	14	4	16	2.9	320	-5.9	82	985.9
1/30/2022	08:30:00 - 08:45:00	17	6	14	4	16	2.9	321	-5.7	81	986.1
1/30/2022	08:45:00 - 09:00:00	17	6	14	4	15	2.4	319	-5.3	80	986.1
1/30/2022	09:00:00 - 09:15:00	16	6	14	4	15	2.5	321	-4.9	78	986.3
1/30/2022	09:15:00 - 09:30:00	16	6	14	4	15	2.2	321	-4.4	77	986.6
1/30/2022	09:30:00 - 09:45:00	15	6	13	4	15	2.5	316	-4.0	75	986.9
1/30/2022	09:45:00 - 10:00:00	15	6	14	4	15	3.2	323	-4.0	75	987.4
1/30/2022	10:00:00 - 10:15:00	15	6	13	4	15	2.8	315	-3.5	73	987.7
1/30/2022	10:15:00 - 10:30:00	15	6	13	3	15	2.8	324	-3.3	72	988.0
1/30/2022	10:30:00 - 10:45:00	15	6	13	3	15	3.2	329	-3.1	71	988.3
1/30/2022	10:45:00 - 11:00:00	15	6	13	4	15	3.1	324	-2.9	70	988.4
1/30/2022	11:00:00 - 11:15:00	15	6	13	4	15	2.4	305	-2.6	69	988.4
1/30/2022	11:15:00 - 11:30:00	15	6	13	4	15	2.8	323	-2.6	69	988.2
1/30/2022	11:30:00 - 11:45:00	15	6	13	4	14	2.9	328	-2.3	68	988.0
1/30/2022	11:45:00 - 12:00:00	15	6	14	4	14	2.9	313	-2.1	67	988.0
1/30/2022	12:00:00 - 12:15:00	15	6	14	4	14	3.2	308	-2.0	66	988.2
1/30/2022	12:15:00 - 12:30:00	15	6	13	4	14	3.1	311	-1.7	65	988.3

Appendix A: Complete Preliminary Data Record

Date	Timestamp	SAM 1	SAM 2	SAM 3	SAM 4	SAM 5	Meteorological Station				
		Average Conc. [ $\mu\text{g}/\text{m}^3$ ]	Average Conc. [ $\mu\text{g}/\text{m}^3$ ]	Average Conc. [ $\mu\text{g}/\text{m}^3$ ]	Average Conc. [ $\mu\text{g}/\text{m}^3$ ]	Average Conc. [ $\mu\text{g}/\text{m}^3$ ]	Wind Speed [mph]	Wind Direction [degrees]	Air Temp. [ $^{\circ}\text{Celsius}$ ]	Relative Humidity [%]	Barometric Pressure [mb]
1/30/2022	12:30:00 - 12:45:00	14	6	13	3	14	2.9	314	-1.3	63	988.1
1/30/2022	12:45:00 - 13:00:00	14	6	13	3	14	2.7	330	-1.0	62	987.9
1/30/2022	13:00:00 - 13:15:00	15	6	13	3	14	3.1	323	-0.9	62	987.9
1/30/2022	13:15:00 - 13:30:00	15	6	13	3	14	3.4	316	-0.8	62	988.1
1/30/2022	13:30:00 - 13:45:00	15	6	13	4	14	2.9	336	-0.5	61	988.2
1/30/2022	13:45:00 - 14:00:00	15	6	13	3	14	2.9	308	-0.5	61	988.2
1/30/2022	14:00:00 - 14:15:00	15	6	13	4	14	3.1	315	-0.6	62	988.4
1/30/2022	14:15:00 - 14:30:00	15	6	13	4	14	3.2	326	-0.5	61	988.7
1/30/2022	14:30:00 - 14:45:00	15	6	13	4	14	3.0	317	-0.5	62	988.9
1/30/2022	14:45:00 - 15:00:00	16	6	14	4	15	2.7	325	-0.5	62	989.1
1/30/2022	15:00:00 - 15:15:00	16	6	14	4	15	2.6	323	-0.4	62	989.2
1/30/2022	15:15:00 - 15:30:00	16	6	14	4	15	2.8	330	-0.9	63	989.5
1/30/2022	15:30:00 - 15:45:00	16	6	14	4	15	2.6	327	-1.1	64	989.9
1/30/2022	15:45:00 - 16:00:00	17	6	14	4	16	2.5	331	-1.3	65	989.9
1/30/2022	16:00:00 - 16:15:00	17	7	15	4	16	2.5	325	-1.7	67	990.1
1/30/2022	16:15:00 - 16:30:00	17	7	15	4	17	2.2	326	-2.0	68	990.4
1/30/2022	16:30:00 - 16:45:00	18	7	16	4	18	2.1	323	-2.2	69	990.8
1/30/2022	16:45:00 - 17:00:00	18	7	16	4	18	2.0	327	-2.4	70	991.0
1/30/2022	17:00:00 - 17:15:00	19	7	17	4	19	1.7	326	-2.6	70	991.2
1/30/2022	17:15:00 - 17:30:00	19	7	17	5	19	1.5	325	-2.8	71	991.3
1/30/2022	17:30:00 - 17:45:00	20	7	17	5	20	0.9	347	-3.0	71	991.1
1/30/2022	17:45:00 - 18:00:00	20	8	17	5	19	1.1	338	-3.2	72	991.3
1/30/2022	18:00:00 - 18:15:00	20	8	18	5	20	1.4	324	-3.3	73	991.8
1/30/2022	18:15:00 - 18:30:00	20	8	18	5	20	0.9	349	-3.3	73	991.9
1/30/2022	18:30:00 - 18:45:00	20	8	18	5	20	0.7	342	-3.5	74	991.9
1/30/2022	18:45:00 - 19:00:00	20	8	18	5	20	0.6	346	-3.6	74	991.9
1/30/2022	19:00:00 - 19:15:00	20	8	18	5	20	0.9	317	-3.7	74	992.2
1/30/2022	19:15:00 - 19:30:00	31	14	26	9	29	0.9	277	-3.8	75	992.5
1/30/2022	19:30:00 - 19:45:00	21	9	19	5	21	0.7	297	-3.9	75	992.6
1/30/2022	19:45:00 - 20:00:00	21	9	19	5	22	0.7	306	-4.0	76	992.6
1/30/2022	20:00:00 - 20:15:00	21	8	19	5	22	0.8	310	-4.0	76	992.7
1/30/2022	20:15:00 - 20:30:00	22	9	19	5	22	1.0	312	-4.0	77	992.8
1/30/2022	20:30:00 - 20:45:00	21	9	19	5	22	1.1	316	-4.0	77	992.9
1/30/2022	20:45:00 - 21:00:00	22	9	19	5	22	0.6	325	-4.2	77	992.9
1/30/2022	21:00:00 - 21:15:00	23	9	20	5	22	0.4	321	-4.4	78	992.8
1/30/2022	21:15:00 - 21:30:00	23	9	20	6	23	0.3	7	-4.6	79	992.6
1/30/2022	21:30:00 - 21:45:00	23	9	20	6	23	0.4	327	-4.6	79	992.8
1/30/2022	21:45:00 - 22:00:00	23	9	20	6	23	0.5	357	-4.6	79	992.8
1/30/2022	22:00:00 - 22:15:00	23	9	20	5	23	0.5	37	-4.6	79	992.8
1/30/2022	22:15:00 - 22:30:00	23	9	20	5	22	0.3	12	-4.8	79	992.8
1/30/2022	22:30:00 - 22:45:00	23	9	20	5	23	0.5	25	-4.9	79	992.6
1/30/2022	22:45:00 - 23:00:00	23	9	20	5	23	0.3	353	-5.0	79	992.7
1/30/2022	23:00:00 - 23:15:00	24	9	20	5	23	0.1	329	-5.3	80	992.7
1/30/2022	23:15:00 - 23:30:00	25	9	21	6	23	0.2	334	-5.5	81	992.5
1/30/2022	23:30:00 - 23:45:00	25	9	21	6	24	0.4	297	-5.7	81	992.4
1/30/2022	23:45:00 - 00:00:00	25	10	22	6	25	0.4	261	-5.9	82	992.4
1/31/2022	00:00:00 - 00:15:00	26	11	22	6	25	0.4	248	-6.0	82	992.7
1/31/2022	00:15:00 - 00:30:00	27	10	23	6	26	0.3	235	-6.2	83	992.7
1/31/2022	00:30:00 - 00:45:00	27	10	23	6	27	0.3	221	-6.6	84	992.4
1/31/2022	00:45:00 - 01:00:00	28	11	24	7	27	0.5	226	-7.0	85	992.4
1/31/2022	01:00:00 - 01:15:00	29	11	24	7	28	0.2	119	-7.2	86	992.2
1/31/2022	01:15:00 - 01:30:00	30	13	24	7	28	0.4	155	-7.5	87	992.1
1/31/2022	01:30:00 - 01:45:00	31	16	24	7	28	0.4	204	-8.1	88	992.2
1/31/2022	01:45:00 - 02:00:00	31	14	25	7	29	0.5	218	-8.0	90	992.4
1/31/2022	02:00:00 - 02:15:00	33	12	26	7	30	0.4	206	-8.0	90	992.5
1/31/2022	02:15:00 - 02:30:00	32	12	26	7	29	0.4	231	-7.7	90	992.6
1/31/2022	02:30:00 - 02:45:00	33	12	26	7	29	0.5	213	-8.2	90	992.5
1/31/2022	02:45:00 - 03:00:00	33	12	26	7	30	0.6	222	-7.8	91	992.5
1/31/2022	03:00:00 - 03:15:00	33	12	26	7	30	0.5	193	-7.9	90	992.6
1/31/2022	03:15:00 - 03:30:00	33	12	26	7	30	0.4	151	-8.1	91	992.4
1/31/2022	03:30:00 - 03:45:00	35	12	27	7	30	0.4	176	-8.5	91	992.7
1/31/2022	03:45:00 - 04:00:00	36	12	28	7	32	0.5	200	-8.9	92	992.8

Appendix A: Complete Preliminary Data Record

Date	Timestamp	SAM 1	SAM 2	SAM 3	SAM 4	SAM 5	Meteorological Station				
		Average Conc. [µg/m <sup>3</sup> ]	Average Conc. [µg/m <sup>3</sup> ]	Average Conc. [µg/m <sup>3</sup> ]	Average Conc. [µg/m <sup>3</sup> ]	Average Conc. [µg/m <sup>3</sup> ]	Wind Speed [mph]	Wind Direction [degrees]	Air Temp. [° Celsius]	Relative Humidity [%]	Barometric Pressure [mb]
1/31/2022	04:00:00 - 04:15:00	36	12	28	8	32	0.4	205	-9.0	92	992.8
1/31/2022	04:15:00 - 04:30:00	35	12	27	7	31	0.4	196	-8.9	93	992.9
1/31/2022	04:30:00 - 04:45:00	34	12	27	7	31	0.4	175	-9.3	93	992.9
1/31/2022	04:45:00 - 05:00:00	35	12	28	8	31	0.4	155	-9.3	94	993.0
1/31/2022	05:00:00 - 05:15:00	34	12	29	8	32	0.4	170	-9.2	94	993.1
1/31/2022	05:15:00 - 05:30:00	33	11	29	8	33	0.5	222	-9.3	94	993.2
1/31/2022	05:30:00 - 05:45:00	33	11	29	8	34	0.4	228	-9.3	94	993.4
1/31/2022	05:45:00 - 06:00:00	32	11	29	8	33	0.4	175	-9.4	94	993.6
1/31/2022	06:00:00 - 06:15:00	32	11	29	8	33	0.5	144	-9.3	95	993.6
1/31/2022	06:15:00 - 06:30:00	31	11	29	8	36	0.4	154	-9.2	94	993.5
1/31/2022	06:30:00 - 06:45:00	32	12	29	8	37	0.3	173	-9.6	94	993.6
1/31/2022	06:45:00 - 07:00:00	33	12	31	8	35	0.4	187	-9.7	94	993.8
1/31/2022	07:00:00 - 07:15:00	46	13	41	10	48	0.5	160	-9.5	95	993.8
1/31/2022	07:15:00 - 07:30:00	36	13	33	11	40	0.8	157	-8.6	95	993.8
1/31/2022	07:30:00 - 07:45:00	39	14	34	11	40	1.0	143	-7.1	92	993.8
1/31/2022	07:45:00 - 08:00:00	41	13	35	11	40	1.1	124	-6.3	89	993.9
1/31/2022	08:00:00 - 08:15:00	38	13	31	11	37	1.6	130	-5.8	86	994.0
1/31/2022	08:15:00 - 08:30:00	38	12	31	9	32	1.5	127	-5.4	85	993.9
1/31/2022	08:30:00 - 08:45:00	36	12	29	10	32	1.5	139	-4.8	83	994.0
1/31/2022	08:45:00 - 09:00:00	37	12	30	9	33	1.4	140	-4.1	81	994.3
1/31/2022	09:00:00 - 09:15:00	36	12	30	9	32	1.7	141	-3.3	79	994.3
1/31/2022	09:15:00 - 09:30:00	34	12	29	9	32	1.5	144	-2.9	78	994.3
1/31/2022	09:30:00 - 09:45:00	33	12	27	9	32	1.5	153	-2.1	76	994.3
1/31/2022	09:45:00 - 10:00:00	33	12	28	9	33	1.2	158	-1.3	74	994.2
1/31/2022	10:00:00 - 10:15:00	35	13	28	10	35	1.2	156	-0.8	72	994.2
1/31/2022	10:15:00 - 10:30:00	34	12	27	9	34	1.4	166	0.0	68	994.1
1/31/2022	10:30:00 - 10:45:00	32	12	26	9	32	1.3	171	-0.1	68	994.1
1/31/2022	10:45:00 - 11:00:00	30	11	23	8	29	1.5	168	0.4	65	993.9
1/31/2022	11:00:00 - 11:15:00	27	10	22	7	27	1.7	150	0.7	64	993.7
1/31/2022	11:15:00 - 11:30:00	27	9	21	7	25	1.2	171	1.3	62	993.5
1/31/2022	11:30:00 - 11:45:00	26	9	21	7	24	1.3	186	1.6	60	993.2
1/31/2022	11:45:00 - 12:00:00	26	9	20	6	25	1.1	159	2.0	59	992.9
1/31/2022	12:00:00 - 12:15:00	26	9	21	6	25	1.2	167	2.3	58	992.6
1/31/2022	12:15:00 - 12:30:00	24	9	19	6	24	1.3	190	2.8	56	992.4
1/31/2022	12:30:00 - 12:45:00	22	8	18	5	21	1.1	183	3.1	54	992.0
1/31/2022	12:45:00 - 13:00:00	21	8	17	5	21	1.4	173	3.3	53	991.9
1/31/2022	13:00:00 - 13:15:00	20	7	18	5	19	1.3	172	3.7	52	991.8
1/31/2022	13:15:00 - 13:30:00	20	7	15	5	18	1.3	201	4.1	50	991.7
1/31/2022	13:30:00 - 13:45:00	20	8	16	5	19	1.5	188	4.1	50	991.5
1/31/2022	13:45:00 - 14:00:00	21	8	17	5	20	1.2	192	4.4	50	991.3
1/31/2022	14:00:00 - 14:15:00	21	7	16	5	19	1.3	187	4.4	49	991.3
1/31/2022	14:15:00 - 14:30:00	20	7	16	5	18	1.5	155	4.2	49	991.0
1/31/2022	14:30:00 - 14:45:00	20	7	16	5	19	1.3	156	4.2	50	990.9
1/31/2022	14:45:00 - 15:00:00	21	7	16	5	20	1.2	161	4.8	49	990.9
1/31/2022	15:00:00 - 15:15:00	20	8	16	5	20	1.1	172	4.2	50	990.9
1/31/2022	15:15:00 - 15:30:00	21	8	17	5	19	1.4	153	3.9	51	990.8
1/31/2022	15:30:00 - 15:45:00	21	8	17	5	20	1.1	155	3.9	52	990.8
1/31/2022	15:45:00 - 16:00:00	21	8	17	5	20	1.9	142	3.8	52	990.7
1/31/2022	16:00:00 - 16:15:00	22	8	18	5	21	1.4	145	3.8	52	990.9
1/31/2022	16:15:00 - 16:30:00	21	8	17	5	20	1.4	149	3.7	52	990.9
1/31/2022	16:30:00 - 16:45:00	22	8	18	5	21	2.0	148	3.6	52	990.8
1/31/2022	16:45:00 - 17:00:00	22	8	18	5	21	1.3	159	3.4	53	990.8
1/31/2022	17:00:00 - 17:15:00	22	8	18	5	22	1.3	163	3.3	53	991.0
1/31/2022	17:15:00 - 17:30:00	22	8	18	5	21	1.5	166	3.2	54	991.1
1/31/2022	17:30:00 - 17:45:00	23	8	18	5	25	1.7	158	3.0	54	990.9
1/31/2022	17:45:00 - 18:00:00	24	9	19	5	23	1.6	139	2.8	55	990.8
1/31/2022	18:00:00 - 18:15:00	24	9	20	6	23	2.0	145	2.6	55	990.9
1/31/2022	18:15:00 - 18:30:00	25	9	20	6	24	2.5	142	2.5	56	990.8
1/31/2022	18:30:00 - 18:45:00	25	9	20	6	24	2.2	142	2.4	57	990.8
1/31/2022	18:45:00 - 19:00:00	25	9	20	6	24	2.5	142	2.3	58	990.8
1/31/2022	19:00:00 - 19:15:00	26	9	21	6	25	2.5	144	2.1	59	990.7
1/31/2022	19:15:00 - 19:30:00	27	10	22	6	26	2.2	145	2.1	60	990.5

## Appendix A: Complete Preliminary Data Record

Date	Timestamp	SAM 1	SAM 2	SAM 3	SAM 4	SAM 5	Meteorological Station				
		Average Conc. [ $\mu\text{g}/\text{m}^3$ ]	Average Conc. [ $\mu\text{g}/\text{m}^3$ ]	Average Conc. [ $\mu\text{g}/\text{m}^3$ ]	Average Conc. [ $\mu\text{g}/\text{m}^3$ ]	Average Conc. [ $\mu\text{g}/\text{m}^3$ ]	Wind Speed [mph]	Wind Direction [degrees]	Air Temp. [ $^{\circ}\text{Celsius}$ ]	Relative Humidity [%]	Barometric Pressure [mb]
1/31/2022	19:30:00 - 19:45:00	28	10	23	6	27	2.4	144	2.2	61	990.4
1/31/2022	19:45:00 - 20:00:00	29	10	23	7	28	1.6	151	2.2	61	990.4
1/31/2022	20:00:00 - 20:15:00	29	11	24	7	28	1.5	149	2.2	62	990.4
1/31/2022	20:15:00 - 20:30:00	29	10	24	7	28	1.4	148	2.1	62	990.3
1/31/2022	20:30:00 - 20:45:00	29	11	24	7	28	1.5	170	2.0	63	990.3
1/31/2022	20:45:00 - 21:00:00	29	11	24	7	28	1.3	152	1.9	63	990.2
1/31/2022	21:00:00 - 21:15:00	29	10	23	7	28	1.4	148	1.7	64	990.1
1/31/2022	21:15:00 - 21:30:00	28	10	23	7	27	1.3	149	1.6	65	990.0
1/31/2022	21:30:00 - 21:45:00	28	10	23	7	27	1.2	151	1.6	65	989.8
1/31/2022	21:45:00 - 22:00:00	28	10	23	6	27	1.1	172	1.5	65	989.7
1/31/2022	22:00:00 - 22:15:00	27	10	23	7	27	1.4	173	1.5	65	989.6
1/31/2022	22:15:00 - 22:30:00	28	10	23	6	27	1.3	164	1.6	64	989.7
1/31/2022	22:30:00 - 22:45:00	28	10	23	7	28	1.5	165	1.5	65	989.6
1/31/2022	22:45:00 - 23:00:00	28	10	23	7	27	1.8	156	1.6	65	989.5
1/31/2022	23:00:00 - 23:15:00	28	10	23	6	27	1.7	163	1.6	65	989.4
1/31/2022	23:15:00 - 23:30:00	27	10	22	6	26	1.5	158	1.7	64	989.2
1/31/2022	23:30:00 - 23:45:00	27	10	22	6	26	1.1	140	1.7	64	989.2
1/31/2022	23:45:00 - 00:00:00	27	10	22	6	26	1.4	142	1.7	64	989.1
2/1/2022	00:00:00 - 00:15:00	26	10	22	6	26	1.3	142	1.6	64	989.0
2/1/2022	00:15:00 - 00:30:00	26	10	22	6	26	1.5	157	1.5	65	988.9
2/1/2022	00:30:00 - 00:45:00	26	9	21	6	25	1.2	148	1.6	65	988.9
2/1/2022	00:45:00 - 01:00:00	25	9	21	6	25	1.1	171	1.6	65	988.8
2/1/2022	01:00:00 - 01:15:00	25	9	21	6	25	1.1	173	1.6	65	988.8
2/1/2022	01:15:00 - 01:30:00	25	9	21	6	25	0.9	185	1.4	66	988.6
2/1/2022	01:30:00 - 01:45:00	25	9	21	6	25	1.1	174	1.4	66	988.6
2/1/2022	01:45:00 - 02:00:00	25	9	20	6	24	1.0	176	1.3	66	988.6
2/1/2022	02:00:00 - 02:15:00	24	9	20	6	24	1.0	173	1.1	67	988.4
2/1/2022	02:15:00 - 02:30:00	24	9	20	6	24	1.1	173	1.0	67	988.3
2/1/2022	02:30:00 - 02:45:00	24	9	20	6	24	0.9	198	0.9	68	988.2
2/1/2022	02:45:00 - 03:00:00	23	9	19	6	23	0.8	182	0.9	68	988.1
2/1/2022	03:00:00 - 03:15:00	23	8	19	5	22	0.7	178	1.0	68	988.0
2/1/2022	03:15:00 - 03:30:00	22	8	18	5	22	0.6	189	1.2	68	987.9
2/1/2022	03:30:00 - 03:45:00	21	8	18	5	21	0.6	185	1.3	68	988.0
2/1/2022	03:45:00 - 04:00:00	21	8	17	5	20	0.6	202	1.4	68	988.0
2/1/2022	04:00:00 - 04:15:00	20	8	17	5	20	0.8	174	1.3	68	987.9
2/1/2022	04:15:00 - 04:30:00	20	8	17	5	20	0.9	194	1.4	68	987.9
2/1/2022	04:30:00 - 04:45:00	20	7	17	5	20	0.8	192	1.2	69	987.9
2/1/2022	04:45:00 - 05:00:00	19	7	16	5	19	1.1	193	1.5	68	987.9
2/1/2022	05:00:00 - 05:15:00	18	7	16	4	18	1.2	193	1.7	68	987.8
2/1/2022	05:15:00 - 05:30:00	18	7	15	4	18	1.0	200	1.8	68	987.8
2/1/2022	05:30:00 - 05:45:00	18	7	15	4	18	1.0	204	1.7	69	987.8
2/1/2022	05:45:00 - 06:00:00	18	7	16	4	18	0.7	196	1.8	69	987.8
2/1/2022	06:00:00 - 06:15:00	18	7	16	4	18	1.0	196	1.9	69	987.8
2/1/2022	06:15:00 - 06:30:00	19	7	16	5	19	0.9	199	1.9	69	987.8
2/1/2022	06:30:00 - 06:45:00	19	7	16	5	19	0.8	200	1.9	69	987.8
2/1/2022	06:45:00 - 07:00:00	19	7	16	5	19	0.7	188	1.9	70	987.7
2/1/2022	07:00:00 - 07:15:00	19	7	16	5	19	0.9	185	1.9	70	987.8
2/1/2022	07:15:00 - 07:30:00	19	7	16	5	19	1.0	189	2.0	71	987.8
2/1/2022	07:30:00 - 07:45:00	19	7	16	5	19	1.5	206	2.3	70	987.8
2/1/2022	07:45:00 - 08:00:00	19	7	16	5	18	1.5	203	2.7	70	988.0
2/1/2022	08:00:00 - 08:15:00	19	7	16	5	19	1.2	208	3.2	69	988.1
2/1/2022	08:15:00 - 08:30:00	22	7	16	5	18	1.2	195	4.0	68	988.2
2/1/2022	08:30:00 - 08:45:00	18	7	15	4	18	1.3	201	4.9	65	988.3
2/1/2022	08:45:00 - 09:00:00	19	7	15	4	17	1.4	196	5.5	64	988.5
2/1/2022	09:00:00 - 09:15:00	17	6	15	4	17	1.4	189	6.4	62	988.5
2/1/2022	09:15:00 - 09:30:00	17	6	14	4	16	1.9	197	7.3	60	988.5
2/1/2022	09:30:00 - 09:45:00	17	7	14	4	15	1.9	198	8.0	59	988.4
2/1/2022	09:45:00 - 10:00:00	16	6	13	4	15	2.1	200	8.7	59	988.3
2/1/2022	10:00:00 - 10:15:00	16	6	13	4	15	2.7	202	9.0	59	988.6
2/1/2022	10:15:00 - 10:30:00	16	6	13	3	14	2.4	199	9.0	61	988.8
2/1/2022	10:30:00 - 10:45:00	15	6	12	3	14	2.3	199	9.5	60	988.7
2/1/2022	10:45:00 - 11:00:00	16	7	12	3	14	2.6	200	9.8	59	988.6



Appendix A: Complete Preliminary Data Record

Date	Timestamp	SAM 1	SAM 2	SAM 3	SAM 4	SAM 5	Meteorological Station				
		Average Conc. [µg/m <sup>3</sup> ]	Average Conc. [µg/m <sup>3</sup> ]	Average Conc. [µg/m <sup>3</sup> ]	Average Conc. [µg/m <sup>3</sup> ]	Average Conc. [µg/m <sup>3</sup> ]	Wind Speed [mph]	Wind Direction [degrees]	Air Temp. [° Celsius]	Relative Humidity [%]	Barometric Pressure [mb]
2/1/2022	11:00:00 - 11:15:00	16	9	13	4	15	2.1	203	10.1	59	988.5
2/1/2022	11:15:00 - 11:30:00	16	8	13	4	14	2.5	202	9.6	59	988.4
2/1/2022	11:30:00 - 11:45:00	16	7	13	4	15	2.5	205	9.2	61	988.4
2/1/2022	11:45:00 - 12:00:00	17	6	13	4	15	1.9	203	9.0	64	988.2
2/1/2022	12:00:00 - 12:15:00	17	7	14	4	16	1.4	191	8.5	69	988.2
2/1/2022	12:15:00 - 12:30:00	18	8	15	4	16	1.5	202	8.3	71	988.0
2/1/2022	12:30:00 - 12:45:00	18	8	15	4	16	1.2	196	9.5	68	987.8
2/1/2022	12:45:00 - 13:00:00	18	8	14	4	16	2.0	203	10.3	64	987.6
2/1/2022	13:00:00 - 13:15:00	18	11	14	4	16	2.7	205	11.0	63	987.4
2/1/2022	13:15:00 - 13:30:00	17	12	13	4	15	3.3	199	11.4	63	987.3
2/1/2022	13:30:00 - 13:45:00	17	7	13	5	15	3.0	212	11.3	64	987.1
2/1/2022	13:45:00 - 14:00:00	17	8	13	4	15	2.8	206	11.2	64	987.1
2/1/2022	14:00:00 - 14:15:00	18	7	14	4	16	2.1	204	11.2	64	987.1
2/1/2022	14:15:00 - 14:30:00	19	7	14	4	16	2.3	198	11.3	64	987.1
2/1/2022	14:30:00 - 14:45:00	18	7	14	4	16	2.7	203	11.4	64	987.1
2/1/2022	14:45:00 - 15:00:00	17	6	14	4	16	2.0	202	11.6	66	987.1
2/1/2022	15:00:00 - 15:15:00	16	6	13	3	14	2.3	203	11.8	67	987.1
2/1/2022	15:15:00 - 15:30:00	15	6	12	3	13	2.8	204	11.7	67	987.1
2/1/2022	15:30:00 - 15:45:00	16	5	13	3	13	2.7	203	11.5	69	987.2
2/1/2022	15:45:00 - 16:00:00	15	5	12	3	13	2.2	206	11.4	69	987.3
2/1/2022	16:00:00 - 16:15:00	15	5	12	3	13	1.7	205	11.2	70	987.6
2/1/2022	16:15:00 - 16:30:00	16	6	13	4	14	1.7	200	9.7	82	987.8
2/1/2022	16:30:00 - 16:45:00	17	6	14	4	16	1.2	202	9.1	84	987.8
2/1/2022	16:45:00 - 17:00:00	Offline	7	Offline	4	16	Offline	Offline	Offline	Offline	988.9
2/1/2022	17:00:00 - 17:15:00	Offline	7	Offline	4	17	Offline	Offline	Offline	Offline	988.9
2/1/2022	17:15:00 - 17:30:00	Offline	7	Offline	4	18	0.8	291	7.4	89	988.9
2/1/2022	17:30:00 - 17:45:00	26	8	19	5	19	0.7	293	7.4	97	988.9
2/1/2022	17:45:00 - 18:00:00	22	7	17	4	17	1.3	282	7.4	97	989.1
2/1/2022	18:00:00 - 18:15:00	22	7	17	4	18	0.9	290	7.2	98	989.2
2/1/2022	18:15:00 - 18:30:00	23	7	18	5	19	0.8	308	7.0	98	989.3
2/1/2022	18:30:00 - 18:45:00	27	9	21	6	22	0.9	323	6.9	98	989.5
2/1/2022	18:45:00 - 19:00:00	29	9	22	6	24	1.4	340	6.7	99	989.5
2/1/2022	19:00:00 - 19:15:00	29	9	22	6	24	1.8	359	6.0	98	989.8
2/1/2022	19:15:00 - 19:30:00	22	8	17	5	19	1.8	29	4.7	98	990.0
2/1/2022	19:30:00 - 19:45:00	19	7	15	4	16	1.8	19	4.0	99	990.1
2/1/2022	19:45:00 - 20:00:00	20	7	15	4	17	1.8	17	3.4	99	990.1
2/1/2022	20:00:00 - 20:15:00	25	8	19	5	21	1.9	22	2.9	100	990.0
2/1/2022	20:15:00 - 20:30:00	24	9	19	5	22	2.1	25	2.7	100	990.0
2/1/2022	20:30:00 - 20:45:00	24	8	18	5	21	1.6	21	2.5	100	990.0
2/1/2022	20:45:00 - 21:00:00	24	9	18	6	22	1.1	35	2.4	100	989.9
2/1/2022	21:00:00 - 21:15:00	21	8	17	5	20	1.7	37	2.4	100	989.9
2/1/2022	21:15:00 - 21:30:00	20	7	15	5	19	1.8	35	2.3	100	990.1
2/1/2022	21:30:00 - 21:45:00	20	7	16	5	19	8.1	125	2.1	100	990.1
2/1/2022	21:45:00 - 22:00:00	19	7	15	5	18	20.7	134	1.9	100	990.4
2/1/2022	22:00:00 - 22:15:00	18	7	14	4	16	20.6	134	1.5	100	990.3
2/1/2022	22:15:00 - 22:30:00	18	7	14	4	16	18.7	132	1.2	100	990.2
2/1/2022	22:30:00 - 22:45:00	19	7	15	5	18	2.0	58	1.2	100	990.0
2/1/2022	22:45:00 - 23:00:00	19	7	15	5	19	2.1	77	1.2	100	990.2
2/1/2022	23:00:00 - 23:15:00	20	8	16	5	19	1.2	74	1.3	100	990.3
2/1/2022	23:15:00 - 23:30:00	20	8	16	5	19	1.3	77	1.3	100	990.7
2/1/2022	23:30:00 - 23:45:00	22	8	17	5	21	0.9	35	1.1	100	991.0
2/1/2022	23:45:00 - 00:00:00	20	8	16	5	19	1.5	13	1.0	100	991.1

Appendix A: Complete Preliminary Data Record

1/25/22																				
Site Name	Reading 1		Reading 2		Reading 3		Reading 4		Reading 5		Reading 6		Reading 7		Reading 8		Reading 9		Reading 10	
	Time (CST)	VOC Conc. (ppm)	Time (CST)	VOC Conc. (ppm)	Time (CST)	VOC Conc. (ppm)	Time (CST)	VOC Conc. (ppm)	Time (CST)	VOC Conc. (ppm)	Time (CST)	VOC Conc. (ppm)	Time (CST)	VOC Conc. (ppm)	Time (CST)	VOC Conc. (ppm)	Time (CST)	VOC Conc. (ppm)	Time (CST)	VOC Conc. (ppm)
SAM-1	NA		814	0.0	912	0.0	1007	0.0	1109	0.0	1209	0.0	1306	0.0	1406	0.0	1506	0.0		NA
SAM-2	NA		804	0.0	904	0.0	1002	0.0	1102	0.0	1202	0.0	1302	0.0	1402	0.0	1502	0.0		NA
SAM-3	NA		823	0.0	925	0.0	1018	0.0	1119	0.0	1219	0.0	1318	0.0	1418	0.0	1518	0.0		NA
SAM-4	NA		819	0.0	916	0.0	1012	0.0	1113	0.0	1213	0.0	1312	0.0	1412	0.0	1512	0.0		NA
IMPL-A	NA		800	0.0	901	0.0	1000	0.0	1100	0.0	1200	0.0	1300	0.0	1400	0.0	1500	0.0		NA
IMPL-B	NA		806	0.0	906	0.0	1003	0.0	1104	0.0	1204	0.0	1303	0.0	1403	0.0	1503	0.0		NA
IMPL-C	NA		808	0.0	907	0.0	1004	0.0	1106	0.0	1206	0.0	1304	0.0	1404	0.0	1504	0.0		NA
IMPL-D	NA		810	0.0	909	0.0	1005	0.0	1107	0.0	1207	0.0	1305	0.0	1405	0.0	1505	0.0		NA
IMPL-E	NA		814	0.0	911	0.0	1008	0.0	1110	0.0	1210	0.0	1309	0.0	1409	0.0	1509	0.0		NA
IMPL-F	NA		818	0.0	913	0.0	1010	0.0	1111	0.0	1211	0.0	1310	0.0	1410	0.0	1510	0.0		NA
IMPL-G	NA		820	0.0	918	0.0	1013	0.0	1114	0.0	1214	0.0	1313	0.0	1413	0.0	1513	0.0		NA
IMPL-H	NA		821	0.0	920	0.0	1014	0.0	1115	0.0	1215	0.0	1314	0.0	1414	0.0	1514	0.0		NA
IMPL-I	NA		822	0.0	922	0.0	1015	0.0	1116	0.0	1216	0.0	1315	0.0	1415	0.0	1515	0.0		NA
IMPL-J	NA		823	0.0	924	0.0	1016	0.0	1117	0.0	1217	0.0	1316	0.0	1416	0.0	1516	0.0		NA
IMPL-K	NA		824	0.0	926	0.0	1019	0.0	1120	0.0	1220	0.0	1319	0.0	1419	0.0	1519	0.0		NA
IMPL-L	NA		826	0.0	927	0.0	1020	0.0	1121	0.0	1221	0.0	1320	0.0	1420	0.0	1520	0.0		NA

Note: Measurements using a portable GC are only needed for concentrations over 0.5 ppm.  
 No measurements taken for "Reading 1" due to dark conditions.  
 Excavation stopped at 4:00 pm

1/26/22																				
Site Name	Reading 1		Reading 2		Reading 3		Reading 4		Reading 5		Reading 6		Reading 7		Reading 8		Reading 9		Reading 10	
	Time (CST)	VOC Conc. (ppm)	Time (CST)	VOC Conc. (ppm)	Time (CST)	VOC Conc. (ppm)	Time (CST)	VOC Conc. (ppm)	Time (CST)	VOC Conc. (ppm)	Time (CST)	VOC Conc. (ppm)	Time (CST)	VOC Conc. (ppm)	Time (CST)	VOC Conc. (ppm)	Time (CST)	VOC Conc. (ppm)	Time (CST)	VOC Conc. (ppm)
SAM-1	NA		810	0.0	935	0.0	1007	0.0	1113	0.0	1212	0.0	1312	0.0	1442	0.0	1512	0.0		NA
SAM-2	NA		800	0.0	928	0.0	1002	0.0	1107	0.0	1202	0.0	1302	0.0	1432	0.0	1502	0.0		NA
SAM-3	NA		830	0.0	948	0.0	1019	0.0	1125	0.0	1224	0.0	1324	0.0	1454	0.0	1524	0.0		NA
SAM-4	NA		821	0.0	941	0.0	1012	0.0	1118	0.0	1217	0.0	1317	0.0	1447	0.0	1517	0.0		NA
IMPL-A	NA		755	0.0	925	0.0	1000	0.0	1105	0.0	1200	0.0	1300	0.0	1430	0.0	1500	0.0		NA
IMPL-B	NA		802	0.0	929	0.0	1003	0.0	1109	0.0	1204	0.0	1304	0.0	1434	0.0	1504	0.0		NA
IMPL-C	NA		806	0.0	931	0.0	1004	0.0	1110	0.0	1208	0.0	1308	0.0	1438	0.0	1508	0.0		NA
IMPL-D	NA		808	0.0	933	0.0	1005	0.0	1111	0.0	1210	0.0	1310	0.0	1440	0.0	1510	0.0		NA
IMPL-E	NA		817	0.0	937	0.0	1009	0.0	1115	0.0	1214	0.0	1314	0.0	1444	0.0	1514	0.0		NA
IMPL-F	NA		819	0.0	939	0.0	1011	0.0	1116	0.0	1216	0.0	1316	0.0	1446	0.0	1516	0.0		NA
IMPL-G	NA		822	0.0	942	0.0	1013	0.0	1119	0.0	1218	0.0	1318	0.0	1448	0.0	1518	0.0		NA
IMPL-H	NA		823	0.0	943	0.0	1014	0.0	1120	0.0	1219	0.0	1319	0.0	1449	0.0	1519	0.0		NA
IMPL-I	NA		824	0.0	944	0.0	1015	0.0	1121	0.0	1220	0.0	1320	0.0	1450	0.0	1520	0.0		NA
IMPL-J	NA		826	0.0	946	0.0	1017	0.0	1123	0.0	1222	0.0	1322	0.0	1452	0.0	1522	0.0		NA
IMPL-K	NA		836	0.0	949	0.0	1020	0.0	1126	0.0	1225	0.0	1325	0.0	1455	0.0	1525	0.0		NA
IMPL-L	NA		838	0.0	950	0.0	1021	0.0	1127	0.0	1226	0.0	1326	0.0	1456	0.0	1526	0.0		NA

Note: Measurements using a portable GC are only needed for concentrations over 0.5 ppm.  
 No measurements taken for "Reading 1" due to dark conditions.  
 Excavation stopped at 4:00 pm

Appendix A: Complete Preliminary Data Record

1/27/22																				
Site Name	Reading 1		Reading 2		Reading 3		Reading 4		Reading 5		Reading 6		Reading 7		Reading 8		Reading 9		Reading 10	
	Time (CST)	VOC Conc. (ppm)	Time (CST)	VOC Conc. (ppm)	Time (CST)	VOC Conc. (ppm)	Time (CST)	VOC Conc. (ppm)	Time (CST)	VOC Conc. (ppm)	Time (CST)	VOC Conc. (ppm)	Time (CST)	VOC Conc. (ppm)	Time (CST)	VOC Conc. (ppm)	Time (CST)	VOC Conc. (ppm)	Time (CST)	VOC Conc. (ppm)
SAM-1	737	0.0	827	0.0	910	0.0	1007	0.0	1107	0.0	1212	0.0	1312	0.0	1412	0.0	1512	0.0	1612	0.0
SAM-2	732	0.0	822	0.0	903	0.0	1002	0.0	1102	0.0	1202	0.0	1302	0.0	1402	0.0	1502	0.0	1602	0.0
SAM-3	749	0.0	839	0.0	923	0.0	1019	0.0	1119	0.0	1224	0.0	1324	0.0	1424	0.0	1524	0.0	1624	0.0
SAM-4	742	0.0	832	0.0	916	0.0	1012	0.0	1112	0.0	1217	0.0	1317	0.0	1417	0.0	1517	0.0	1617	0.0
IMPL-A	730	0.0	820	0.0	900	0.0	1000	0.0	1100	0.0	1200	0.0	1300	0.0	1400	0.0	1500	0.0	1600	0.0
IMPL-B	733	0.0	823	0.0	904	0.0	1003	0.0	1103	0.0	1204	0.0	1304	0.0	1404	0.0	1504	0.0	1604	0.0
IMPL-C	734	0.0	824	0.0	906	0.0	1004	0.0	1104	0.0	1208	0.0	1308	0.0	1408	0.0	1508	0.0	1608	0.0
IMPL-D	735	0.0	825	0.0	908	0.0	1005	0.0	1105	0.0	1210	0.0	1310	0.0	1410	0.0	1510	0.0	1610	0.0
IMPL-E	739	0.0	829	0.0	912	0.0	1009	0.0	1109	0.0	1214	0.0	1314	0.0	1414	0.0	1514	0.0	1614	0.0
IMPL-F	741	0.0	831	0.0	914	0.0	1011	0.0	1111	0.0	1216	0.0	1316	0.0	1416	0.0	1516	0.0	1616	0.0
IMPL-G	743	0.0	833	0.0	917	0.0	1013	0.0	1113	0.0	1218	0.0	1318	0.0	1418	0.0	1518	0.0	1618	0.0
IMPL-H	744	0.0	834	0.0	918	0.0	1014	0.0	1114	0.0	1219	0.0	1319	0.0	1419	0.0	1519	0.0	1619	0.0
IMPL-I	745	0.0	835	0.0	919	0.0	1015	0.0	1115	0.0	1220	0.0	1320	0.0	1420	0.0	1520	0.0	1620	0.0
IMPL-J	747	0.0	837	0.0	921	0.0	1017	0.0	1117	0.0	1222	0.0	1322	0.0	1422	0.0	1522	0.0	1622	0.0
IMPL-K	750	0.0	840	0.0	924	0.0	1020	0.1	1120	0.1	1225	0.0	1325	0.0	1425	0.0	1525	0.0	1625	0.0
IMPL-L	751	0.0	841	0.0	925	0.0	1021	0.1	1121	0.1	1226	0.0	1326	0.0	1426	0.0	1526	0.0	1626	0.0

Note: Measurements using a portable GC are only needed for concentrations over 0.5 ppm.  
No measurements taken for "Reading 1" due to dark conditions.

1/28/22																				
Site Name	Reading 1		Reading 2		Reading 3		Reading 4		Reading 5		Reading 6		Reading 7		Reading 8		Reading 9		Reading 10	
	Time (CST)	VOC Conc. (ppm)	Time (CST)	VOC Conc. (ppm)	Time (CST)	VOC Conc. (ppm)	Time (CST)	VOC Conc. (ppm)	Time (CST)	VOC Conc. (ppm)	Time (CST)	VOC Conc. (ppm)	Time (CST)	VOC Conc. (ppm)	Time (CST)	VOC Conc. (ppm)	Time (CST)	VOC Conc. (ppm)	Time (CST)	VOC Conc. (ppm)
SAM-1	737	0	807	0	910	0	1007	0	1107	0	1212	0	1312	0	1412	0	1512	0	1612	0
SAM-2	732	0	802	0	903	0	1002	0	1102	0	1202	0	1302	0	1402	0	1502	0	1602	0
SAM-3	749	0	819	0	923	0	1019	0	1119	0	1224	0	1324	0	1424	0	1524	0	1624	0
SAM-4	742	0	812	0	916	0	1012	0	1112	0	1217	0	1317	0	1417	0	1517	0	1617	0
IMPL-A	730	0	800	0	900	0	1000	0	1100	0	1200	0	1300	0	1400	0	1500	0	1600	0
IMPL-B	733	0	803	0	904	0	1003	0	1103	0	1204	0	1304	0	1404	0	1504	0	1604	0
IMPL-C	734	0	804	0	906	0	1004	0	1104	0	1208	0	1308	0	1408	0	1508	0	1608	0
IMPL-D	735	0	805	0	908	0	1005	0	1105	0	1210	0	1310	0	1410	0	1510	0	1610	0
IMPL-E	739	0	809	0	912	0	1009	0	1109	0	1214	0	1314	0	1414	0	1514	0	1614	0
IMPL-F	741	0	811	0	914	0	1011	0	1111	0	1216	0	1316	0	1416	0	1516	0	1616	0
IMPL-G	743	0	813	0	917	0	1013	0	1113	0	1218	0	1318	0	1418	0	1518	0	1618	0
IMPL-H	744	0	814	0	918	0	1014	0	1114	0	1219	0	1319	0	1419	0	1519	0	1619	0
IMPL-I	745	0	815	0	919	0	1015	0	1115	0	1220	0	1320	0	1420	0	1520	0	1620	0
IMPL-J	747	0	817	0	921	0	1017	0	1117	0	1222	0	1322	0	1422	0	1522	0	1622	0
IMPL-K	750	0	820	0	924	0	1020	0.1	1120	0	1225	0	1325	0	1425	0	1525	0	1625	0
IMPL-L	751	0	821	0	925	0	1021	0.1	1121	0	1226	0	1326	0	1426	0	1526	0	1626	0

Note: Measurements using a portable GC are only needed for concentrations over 0.5 ppm.

Appendix A: Complete Preliminary Data Record

1/31/22																				
Site Name	Reading 1		Reading 2		Reading 3		Reading 4		Reading 5		Reading 6		Reading 7		Reading 8		Reading 9		Reading 10	
	Time (CST)	VOC Conc. (ppm)	Time (CST)	VOC Conc. (ppm)	Time (CST)	VOC Conc. (ppm)	Time (CST)	VOC Conc. (ppm)	Time (CST)	VOC Conc. (ppm)	Time (CST)	VOC Conc. (ppm)	Time (CST)	VOC Conc. (ppm)	Time (CST)	VOC Conc. (ppm)	Time (CST)	VOC Conc. (ppm)	Time (CST)	VOC Conc. (ppm)
SAM-1	737	0.0	813	0.0	911	0.0	1007	0.0	1107	0.0	1212	0.0	1312	0.0	1412	0.0	1512	0.0	1612	0.0
SAM-2	732	0.0	805	0.0	903	0.0	1002	0.0	1102	0.0	1202	0.0	1302	0.0	1402	0.0	1502	0.0	1602	0.0
SAM-3	749	0.0	830	0.0	926	0.0	1019	0.0	1119	0.0	1224	0.0	1324	0.0	1424	0.0	1524	0.0	1624	0.0
SAM-4	742	0.0	820	0.0	918	0.0	1012	0.0	1112	0.0	1217	0.0	1317	0.0	1417	0.0	1517	0.0	1617	0.0
IMPL-A	730	0.0	800	0.0	900	0.0	1000	0.0	1100	0.0	1200	0.0	1300	0.0	1400	0.0	1500	0.0	1600	0.0
IMPL-B	733	0.0	806	0.0	904	0.0	1003	0.0	1103	0.0	1204	0.0	1304	0.0	1404	0.0	1504	0.0	1604	0.0
IMPL-C	734	0.0	807	0.0	906	0.0	1004	0.0	1104	0.0	1208	0.0	1308	0.0	1408	0.0	1508	0.0	1608	0.0
IMPL-D	735	0.0	808	0.0	908	0.0	1005	0.0	1105	0.0	1210	0.0	1310	0.0	1410	0.0	1510	0.0	1610	0.0
IMPL-E	739	0.0	815	0.0	913	0.0	1009	0.0	1109	0.0	1214	0.0	1314	0.0	1414	0.0	1514	0.0	1614	0.0
IMPL-F	741	0.0	817	0.0	915	0.0	1011	0.0	1111	0.0	1216	0.0	1316	0.0	1416	0.0	1516	0.0	1616	0.0
IMPL-G	743	0.0	821	0.0	919	0.0	1013	0.0	1113	0.0	1218	0.0	1318	0.0	1418	0.0	1518	0.0	1618	0.0
IMPL-H	744	0.0	822	0.0	920	0.0	1014	0.0	1114	0.0	1219	0.0	1319	0.0	1419	0.0	1519	0.0	1619	0.0
IMPL-I	745	0.0	823	0.0	921	0.0	1015	0.0	1115	0.0	1220	0.0	1320	0.0	1420	0.0	1520	0.0	1620	0.0
IMPL-J	747	0.0	825	0.0	923	0.0	1017	0.0	1117	0.0	1222	0.0	1322	0.0	1422	0.0	1522	0.0	1622	0.0
IMPL-K	750	0.0	831	0.0	927	0.0	1020	0.1	1120	0.0	1225	0.0	1325	0.0	1425	0.0	1525	0.0	1625	0.0
IMPL-L	751	0.0	832	0.0	928	0.0	1021	0.1	1121	0.0	1226	0.0	1326	0.0	1426	0.0	1526	0.0	1626	0.0

Note: Measurements using a portable GC are only needed for concentrations over 0.5 ppm.

2/1/22																				
Site Name	Reading 1		Reading 2		Reading 3		Reading 4		Reading 5		Reading 6		Reading 7		Reading 8		Reading 9		Reading 10	
	Time (CST)	VOC Conc. (ppm)	Time (CST)	VOC Conc. (ppm)	Time (CST)	VOC Conc. (ppm)	Time (CST)	VOC Conc. (ppm)	Time (CST)	VOC Conc. (ppm)	Time (CST)	VOC Conc. (ppm)	Time (CST)	VOC Conc. (ppm)	Time (CST)	VOC Conc. (ppm)	Time (CST)	VOC Conc. (ppm)	Time (CST)	VOC Conc. (ppm)
SAM-1	737	0.0	807	0.0	907	0.0	1007	0.0	1107	0.0	1208	0.0	1308	0.0	1409	0.0	1512	0.0	1612	0.0
SAM-2	732	0.0	802	0.0	902	0.0	1002	0.0	1102	0.0	1202	0.0	1302	0.0	1402	0.0	1502	0.0	1602	0.0
SAM-3	749	0.0	821	0.0	918	0.0	1019	0.0	1119	0.0	1220	0.0	1319	0.0	1418	0.0	1524	0.0	1624	0.0
SAM-4	742	0.0	814	0.0	911	0.0	1012	0.0	1112	0.0	1213	0.0	1312	0.0	1412	0.0	1517	0.0	1617	0.0
IMPL-A	730	0.0	800	0.0	900	0.0	1000	0.0	1100	0.0	1200	0.0	1300	0.0	1400	0.0	1500	0.0	1600	0.0
IMPL-B	733	0.0	803	0.0	903	0.0	1003	0.0	1103	0.0	1203	0.0	1304	0.0	1404	0.0	1504	0.0	1604	0.0
IMPL-C	734	0.0	804	0.0	904	0.0	1004	0.0	1104	0.0	1204	0.0	1305	0.0	1406	0.0	1508	0.0	1608	0.0
IMPL-D	735	0.0	805	0.0	905	0.0	1005	0.0	1105	0.0	1206	0.0	1306	0.0	1407	0.0	1510	0.0	1610	0.0
IMPL-E	739	0.0	809	0.0	908	0.0	1009	0.0	1109	0.0	1210	0.0	1309	0.0	1410	0.0	1514	0.0	1614	0.0
IMPL-F	741	0.0	811	0.0	909	0.0	1011	0.0	1111	0.0	1212	0.0	1311	0.0	1411	0.0	1516	0.0	1616	0.0
IMPL-G	743	0.0	815	0.0	912	0.0	1013	0.0	1113	0.0	1214	0.0	1313	0.0	1413	0.0	1518	0.0	1618	0.0
IMPL-H	744	0.0	816	0.0	913	0.0	1014	0.0	1114	0.0	1215	0.0	1314	0.0	1414	0.0	1519	0.0	1619	0.0
IMPL-I	745	0.0	817	0.0	914	0.0	1015	0.0	1115	0.0	1216	0.0	1315	0.0	1415	0.0	1520	0.0	1620	0.0
IMPL-J	747	0.0	819	0.0	916	0.0	1017	0.0	1117	0.0	1218	0.0	1317	0.0	1416	0.0	1522	0.0	1622	0.0
IMPL-K	750	0.0	822	0.0	919	0.0	1020	0.0	1120	0.0	1221	0.0	1320	0.0	1419	0.0	1525	0.0	1625	0.0
IMPL-L	751	0.0	823	0.0	920	0.0	1021	0.0	1121	0.0	1222	0.0	1321	0.0	1420	0.0	1526	0.0	1626	0.0

Note: Measurements using a portable GC are only needed for concentrations over 0.5 ppm.

## **APPENDIX B**

## **COMPLETE PRELIMINARY LAB RESULT DATA**



## Appendix B. Complete Preliminary Lab Result Data

METHOD	Sample			Units	Results	Data Flags	Compound Name
	ID	Start Date/Time	End Date/Time				
TO-13A	20220112-14-SE-SAM1	1/12/2022 8:10	1/14/2022 12:27	UG	2.2		Naphthalene
TO-13A	20220112-14-SE-SAM1	1/12/2022 8:10	1/14/2022 12:27	UG		ND	2-Methylnaphthalene
TO-13A	20220112-14-SE-SAM1	1/12/2022 8:10	1/14/2022 12:27	UG		ND	2-Chloronaphthalene
TO-13A	20220112-14-SE-SAM1	1/12/2022 8:10	1/14/2022 12:27	UG		ND	Acenaphthylene
TO-13A	20220112-14-SE-SAM1	1/12/2022 8:10	1/14/2022 12:27	UG		ND	Acenaphthene
TO-13A	20220112-14-SE-SAM1	1/12/2022 8:10	1/14/2022 12:27	UG		ND	Fluorene
TO-13A	20220112-14-SE-SAM1	1/12/2022 8:10	1/14/2022 12:27	UG		ND	Phenanthrene
TO-13A	20220112-14-SE-SAM1	1/12/2022 8:10	1/14/2022 12:27	UG		ND	Anthracene
TO-13A	20220112-14-SE-SAM1	1/12/2022 8:10	1/14/2022 12:27	UG		ND	Fluoranthene
TO-13A	20220112-14-SE-SAM1	1/12/2022 8:10	1/14/2022 12:27	UG		ND	Pyrene
TO-13A	20220112-14-SE-SAM1	1/12/2022 8:10	1/14/2022 12:27	UG		ND	Chrysene
TO-13A	20220112-14-SE-SAM1	1/12/2022 8:10	1/14/2022 12:27	UG		ND	Benzo(a)anthracene
TO-13A	20220112-14-SE-SAM1	1/12/2022 8:10	1/14/2022 12:27	UG		ND	Benzo(b)fluoranthene
TO-13A	20220112-14-SE-SAM1	1/12/2022 8:10	1/14/2022 12:27	UG		ND	Benzo(k)fluoranthene
TO-13A	20220112-14-SE-SAM1	1/12/2022 8:10	1/14/2022 12:27	UG		ND	Benzo(a)pyrene
TO-13A	20220112-14-SE-SAM1	1/12/2022 8:10	1/14/2022 12:27	UG		ND	Indeno(1,2,3-c,d)pyrene
TO-13A	20220112-14-SE-SAM1	1/12/2022 8:10	1/14/2022 12:27	UG		ND	Dibenz(a,h)anthracene
TO-13A	20220112-14-SE-SAM1	1/12/2022 8:10	1/14/2022 12:27	UG		ND	Benzo(g,h,i)perylene
TO-13A	20220112-14-SE-SAM1	1/12/2022 8:10	1/14/2022 12:27	%R	82		Fluorene-d10
TO-13A	20220112-14-SE-SAM1	1/12/2022 8:10	1/14/2022 12:27	%R	109		Pyrene-d10
TO-13A	20220112-14-SE-SAM1	1/12/2022 8:10	1/14/2022 12:27	%R	91		Benzo(a)pyrene-d12
TO-13A	20220112-14-SE-SAM1	1/12/2022 8:10	1/14/2022 12:27	%R	76		Fluoranthene-d10
TO-13A	20220112-14-NE-SAM2	1/12/2022 8:27	1/14/2022 12:07	UG	1.0		Naphthalene
TO-13A	20220112-14-NE-SAM2	1/12/2022 8:27	1/14/2022 12:07	UG		ND	2-Methylnaphthalene
TO-13A	20220112-14-NE-SAM2	1/12/2022 8:27	1/14/2022 12:07	UG		ND	2-Chloronaphthalene
TO-13A	20220112-14-NE-SAM2	1/12/2022 8:27	1/14/2022 12:07	UG		ND	Acenaphthylene
TO-13A	20220112-14-NE-SAM2	1/12/2022 8:27	1/14/2022 12:07	UG		ND	Acenaphthene
TO-13A	20220112-14-NE-SAM2	1/12/2022 8:27	1/14/2022 12:07	UG		ND	Fluorene
TO-13A	20220112-14-NE-SAM2	1/12/2022 8:27	1/14/2022 12:07	UG		ND	Phenanthrene
TO-13A	20220112-14-NE-SAM2	1/12/2022 8:27	1/14/2022 12:07	UG		ND	Anthracene
TO-13A	20220112-14-NE-SAM2	1/12/2022 8:27	1/14/2022 12:07	UG		ND	Fluoranthene
TO-13A	20220112-14-NE-SAM2	1/12/2022 8:27	1/14/2022 12:07	UG		ND	Pyrene
TO-13A	20220112-14-NE-SAM2	1/12/2022 8:27	1/14/2022 12:07	UG		ND	Chrysene
TO-13A	20220112-14-NE-SAM2	1/12/2022 8:27	1/14/2022 12:07	UG		ND	Benzo(a)anthracene
TO-13A	20220112-14-NE-SAM2	1/12/2022 8:27	1/14/2022 12:07	UG		ND	Benzo(b)fluoranthene
TO-13A	20220112-14-NE-SAM2	1/12/2022 8:27	1/14/2022 12:07	UG		ND	Benzo(k)fluoranthene
TO-13A	20220112-14-NE-SAM2	1/12/2022 8:27	1/14/2022 12:07	UG		ND	Benzo(a)pyrene
TO-13A	20220112-14-NE-SAM2	1/12/2022 8:27	1/14/2022 12:07	UG		ND	Indeno(1,2,3-c,d)pyrene
TO-13A	20220112-14-NE-SAM2	1/12/2022 8:27	1/14/2022 12:07	UG		ND	Dibenz(a,h)anthracene
TO-13A	20220112-14-NE-SAM2	1/12/2022 8:27	1/14/2022 12:07	UG		ND	Benzo(g,h,i)perylene
TO-13A	20220112-14-NE-SAM2	1/12/2022 8:27	1/14/2022 12:07	%R	80		Fluorene-d10
TO-13A	20220112-14-NE-SAM2	1/12/2022 8:27	1/14/2022 12:07	%R	114		Pyrene-d10
TO-13A	20220112-14-NE-SAM2	1/12/2022 8:27	1/14/2022 12:07	%R	94		Benzo(a)pyrene-d12
TO-13A	20220112-14-NE-SAM2	1/12/2022 8:27	1/14/2022 12:07	%R	69		Fluoranthene-d10
TO-13A	20220112-14-SE-SAM3	1/12/2022 8:01	1/14/2022 12:23	UG	1.4		Naphthalene
TO-13A	20220112-14-SE-SAM3	1/12/2022 8:01	1/14/2022 12:23	UG		ND	2-Methylnaphthalene
TO-13A	20220112-14-SE-SAM3	1/12/2022 8:01	1/14/2022 12:23	UG		ND	2-Chloronaphthalene
TO-13A	20220112-14-SE-SAM3	1/12/2022 8:01	1/14/2022 12:23	UG		ND	Acenaphthylene
TO-13A	20220112-14-SE-SAM3	1/12/2022 8:01	1/14/2022 12:23	UG		ND	Acenaphthene
TO-13A	20220112-14-SE-SAM3	1/12/2022 8:01	1/14/2022 12:23	UG		ND	Fluorene
TO-13A	20220112-14-SE-SAM3	1/12/2022 8:01	1/14/2022 12:23	UG		ND	Phenanthrene
TO-13A	20220112-14-SE-SAM3	1/12/2022 8:01	1/14/2022 12:23	UG		ND	Anthracene
TO-13A	20220112-14-SE-SAM3	1/12/2022 8:01	1/14/2022 12:23	UG		ND	Fluoranthene
TO-13A	20220112-14-SE-SAM3	1/12/2022 8:01	1/14/2022 12:23	UG		ND	Pyrene
TO-13A	20220112-14-SE-SAM3	1/12/2022 8:01	1/14/2022 12:23	UG		ND	Chrysene
TO-13A	20220112-14-SE-SAM3	1/12/2022 8:01	1/14/2022 12:23	UG		ND	Benzo(a)anthracene

## Appendix B. Complete Preliminary Lab Result Data

METHOD	Sample			Units	Results	Data Flags	Compound Name
	ID	Start Date/Time	End Date/Time				
TO-13A	20220112-14-SE-SAM3	1/12/2022 8:01	1/14/2022 12:23	UG		ND	Benzo(b)fluoranthene
TO-13A	20220112-14-SE-SAM3	1/12/2022 8:01	1/14/2022 12:23	UG		ND	Benzo(k)fluoranthene
TO-13A	20220112-14-SE-SAM3	1/12/2022 8:01	1/14/2022 12:23	UG		ND	Benzo(a)pyrene
TO-13A	20220112-14-SE-SAM3	1/12/2022 8:01	1/14/2022 12:23	UG		ND	Indeno(1,2,3-c,d)pyrene
TO-13A	20220112-14-SE-SAM3	1/12/2022 8:01	1/14/2022 12:23	UG		ND	Dibenz(a,h)anthracene
TO-13A	20220112-14-SE-SAM3	1/12/2022 8:01	1/14/2022 12:23	UG		ND	Benzo(g,h,i)perylene
TO-13A	20220112-14-SE-SAM3	1/12/2022 8:01	1/14/2022 12:23	%R	64		Fluorene-d10
TO-13A	20220112-14-SE-SAM3	1/12/2022 8:01	1/14/2022 12:23	%R	85		Pyrene-d10
TO-13A	20220112-14-SE-SAM3	1/12/2022 8:01	1/14/2022 12:23	%R	69		Benzo(a)pyrene-d12
TO-13A	20220112-14-SE-SAM3	1/12/2022 8:01	1/14/2022 12:23	%R	59		Fluoranthene-d10
TO-13A	20220112-14-NW-SAM4	1/12/2022 8:39	1/14/2022 12:13	UG	23		Naphthalene
TO-13A	20220112-14-NW-SAM4	1/12/2022 8:39	1/14/2022 12:13	UG	3.9		2-Methylnaphthalene
TO-13A	20220112-14-NW-SAM4	1/12/2022 8:39	1/14/2022 12:13	UG		ND	2-Chloronaphthalene
TO-13A	20220112-14-NW-SAM4	1/12/2022 8:39	1/14/2022 12:13	UG		ND	Acenaphthylene
TO-13A	20220112-14-NW-SAM4	1/12/2022 8:39	1/14/2022 12:13	UG		ND	Acenaphthene
TO-13A	20220112-14-NW-SAM4	1/12/2022 8:39	1/14/2022 12:13	UG		ND	Fluorene
TO-13A	20220112-14-NW-SAM4	1/12/2022 8:39	1/14/2022 12:13	UG		ND	Phenanthrene
TO-13A	20220112-14-NW-SAM4	1/12/2022 8:39	1/14/2022 12:13	UG		ND	Anthracene
TO-13A	20220112-14-NW-SAM4	1/12/2022 8:39	1/14/2022 12:13	UG		ND	Fluoranthene
TO-13A	20220112-14-NW-SAM4	1/12/2022 8:39	1/14/2022 12:13	UG		ND	Pyrene
TO-13A	20220112-14-NW-SAM4	1/12/2022 8:39	1/14/2022 12:13	UG		ND	Chrysene
TO-13A	20220112-14-NW-SAM4	1/12/2022 8:39	1/14/2022 12:13	UG		ND	Benzo(a)anthracene
TO-13A	20220112-14-NW-SAM4	1/12/2022 8:39	1/14/2022 12:13	UG		ND	Benzo(b)fluoranthene
TO-13A	20220112-14-NW-SAM4	1/12/2022 8:39	1/14/2022 12:13	UG		ND	Benzo(k)fluoranthene
TO-13A	20220112-14-NW-SAM4	1/12/2022 8:39	1/14/2022 12:13	UG		ND	Benzo(a)pyrene
TO-13A	20220112-14-NW-SAM4	1/12/2022 8:39	1/14/2022 12:13	UG		ND	Indeno(1,2,3-c,d)pyrene
TO-13A	20220112-14-NW-SAM4	1/12/2022 8:39	1/14/2022 12:13	UG		ND	Dibenz(a,h)anthracene
TO-13A	20220112-14-NW-SAM4	1/12/2022 8:39	1/14/2022 12:13	UG		ND	Benzo(g,h,i)perylene
TO-13A	20220112-14-NW-SAM4	1/12/2022 8:39	1/14/2022 12:13	%R	72		Fluorene-d10
TO-13A	20220112-14-NW-SAM4	1/12/2022 8:39	1/14/2022 12:13	%R	90		Pyrene-d10
TO-13A	20220112-14-NW-SAM4	1/12/2022 8:39	1/14/2022 12:13	%R	77		Benzo(a)pyrene-d12
TO-13A	20220112-14-NW-SAM4	1/12/2022 8:39	1/14/2022 12:13	%R	68		Fluoranthene-d10
TO-13A	20220112-14-SW-SAM5	1/12/2022 8:52	1/14/2022 12:18	UG	2.5		Naphthalene
TO-13A	20220112-14-SW-SAM5	1/12/2022 8:52	1/14/2022 12:18	UG		ND	2-Methylnaphthalene
TO-13A	20220112-14-SW-SAM5	1/12/2022 8:52	1/14/2022 12:18	UG		ND	2-Chloronaphthalene
TO-13A	20220112-14-SW-SAM5	1/12/2022 8:52	1/14/2022 12:18	UG		ND	Acenaphthylene
TO-13A	20220112-14-SW-SAM5	1/12/2022 8:52	1/14/2022 12:18	UG		ND	Acenaphthene
TO-13A	20220112-14-SW-SAM5	1/12/2022 8:52	1/14/2022 12:18	UG		ND	Fluorene
TO-13A	20220112-14-SW-SAM5	1/12/2022 8:52	1/14/2022 12:18	UG		ND	Phenanthrene
TO-13A	20220112-14-SW-SAM5	1/12/2022 8:52	1/14/2022 12:18	UG		ND	Anthracene
TO-13A	20220112-14-SW-SAM5	1/12/2022 8:52	1/14/2022 12:18	UG		ND	Fluoranthene
TO-13A	20220112-14-SW-SAM5	1/12/2022 8:52	1/14/2022 12:18	UG		ND	Pyrene
TO-13A	20220112-14-SW-SAM5	1/12/2022 8:52	1/14/2022 12:18	UG		ND	Chrysene
TO-13A	20220112-14-SW-SAM5	1/12/2022 8:52	1/14/2022 12:18	UG		ND	Benzo(a)anthracene
TO-13A	20220112-14-SW-SAM5	1/12/2022 8:52	1/14/2022 12:18	UG		ND	Benzo(b)fluoranthene
TO-13A	20220112-14-SW-SAM5	1/12/2022 8:52	1/14/2022 12:18	UG		ND	Benzo(k)fluoranthene
TO-13A	20220112-14-SW-SAM5	1/12/2022 8:52	1/14/2022 12:18	UG		ND	Benzo(a)pyrene
TO-13A	20220112-14-SW-SAM5	1/12/2022 8:52	1/14/2022 12:18	UG		ND	Indeno(1,2,3-c,d)pyrene
TO-13A	20220112-14-SW-SAM5	1/12/2022 8:52	1/14/2022 12:18	UG		ND	Dibenz(a,h)anthracene
TO-13A	20220112-14-SW-SAM5	1/12/2022 8:52	1/14/2022 12:18	UG		ND	Benzo(g,h,i)perylene
TO-13A	20220112-14-SW-SAM5	1/12/2022 8:52	1/14/2022 12:18	%R	66		Fluorene-d10
TO-13A	20220112-14-SW-SAM5	1/12/2022 8:52	1/14/2022 12:18	%R	95		Pyrene-d10
TO-13A	20220112-14-SW-SAM5	1/12/2022 8:52	1/14/2022 12:18	%R	76		Benzo(a)pyrene-d12
TO-13A	20220112-14-SW-SAM5	1/12/2022 8:52	1/14/2022 12:18	%R	58		Fluoranthene-d10
TO-13A	20220112-14-SAM6	1/12/2022 8:55	1/14/2022 12:30	UG		ND	Naphthalene
TO-13A	20220112-14-SAM6	1/12/2022 8:55	1/14/2022 12:30	UG		ND	2-Methylnaphthalene

Appendix B. Complete Preliminary Lab Result Data

METHOD	Sample			Units	Results	Data Flags	Compound Name
	ID	Start Date/Time	End Date/Time				
TO-13A	20220112-14-SAM6	1/12/2022 8:55	1/14/2022 12:30	UG		ND	2-Chloronaphthalene
TO-13A	20220112-14-SAM6	1/12/2022 8:55	1/14/2022 12:30	UG		ND	Acenaphthylene
TO-13A	20220112-14-SAM6	1/12/2022 8:55	1/14/2022 12:30	UG		ND	Acenaphthene
TO-13A	20220112-14-SAM6	1/12/2022 8:55	1/14/2022 12:30	UG		ND	Fluorene
TO-13A	20220112-14-SAM6	1/12/2022 8:55	1/14/2022 12:30	UG		ND	Phenanthrene
TO-13A	20220112-14-SAM6	1/12/2022 8:55	1/14/2022 12:30	UG		ND	Anthracene
TO-13A	20220112-14-SAM6	1/12/2022 8:55	1/14/2022 12:30	UG		ND	Fluoranthene
TO-13A	20220112-14-SAM6	1/12/2022 8:55	1/14/2022 12:30	UG		ND	Pyrene
TO-13A	20220112-14-SAM6	1/12/2022 8:55	1/14/2022 12:30	UG		ND	Chrysene
TO-13A	20220112-14-SAM6	1/12/2022 8:55	1/14/2022 12:30	UG		ND	Benzo(a)anthracene
TO-13A	20220112-14-SAM6	1/12/2022 8:55	1/14/2022 12:30	UG		ND	Benzo(b)fluoranthene
TO-13A	20220112-14-SAM6	1/12/2022 8:55	1/14/2022 12:30	UG		ND	Benzo(k)fluoranthene
TO-13A	20220112-14-SAM6	1/12/2022 8:55	1/14/2022 12:30	UG		ND	Benzo(a)pyrene
TO-13A	20220112-14-SAM6	1/12/2022 8:55	1/14/2022 12:30	UG		ND	Indeno(1,2,3-c,d)pyrene
TO-13A	20220112-14-SAM6	1/12/2022 8:55	1/14/2022 12:30	UG		ND	Dibenz(a,h)anthracene
TO-13A	20220112-14-SAM6	1/12/2022 8:55	1/14/2022 12:30	UG		ND	Benzo(g,h,i)perylene
TO-13A	20220112-14-SAM6	1/12/2022 8:55	1/14/2022 12:30	%R	71		Fluorene-d10
TO-13A	20220112-14-SAM6	1/12/2022 8:55	1/14/2022 12:30	%R	98		Pyrene-d10
TO-13A	20220112-14-SAM6	1/12/2022 8:55	1/14/2022 12:30	%R	87		Benzo(a)pyrene-d12
TO-13A	20220112-14-SAM6	1/12/2022 8:55	1/14/2022 12:30	%R	67		Fluoranthene-d10

ND - Non Detect

E - Exceeds instrument calibration range

Q - Exceeds quality control limits

S - Saturated peak

J - Estimated value

B - Compound present in laboratory blank greater than reporting limit (background subtraction not performed)

U - Compound analyzed for but not detected above the reporting limit, LOD, or MDL value. See data page for project specific U-flag definition

N - The identification is based on presumptive evidence.



## Appendix B. Complete Preliminary Lab Result Data

METHOD	Sample			Units	Results	Data Flags	Compound Name
	ID	Start Date/Time	End Date/Time				
TO-13A	20220117-19-SE-SAM1	1/17/2022 8:17	1/19/2022 8:13	UG		ND	Naphthalene
TO-13A	20220117-19-SE-SAM1	1/17/2022 8:17	1/19/2022 8:13	UG		ND	2-Methylnaphthalene
TO-13A	20220117-19-SE-SAM1	1/17/2022 8:17	1/19/2022 8:13	UG		ND	2-Chloronaphthalene
TO-13A	20220117-19-SE-SAM1	1/17/2022 8:17	1/19/2022 8:13	UG		ND	Acenaphthylene
TO-13A	20220117-19-SE-SAM1	1/17/2022 8:17	1/19/2022 8:13	UG		ND	Acenaphthene
TO-13A	20220117-19-SE-SAM1	1/17/2022 8:17	1/19/2022 8:13	UG		ND	Fluorene
TO-13A	20220117-19-SE-SAM1	1/17/2022 8:17	1/19/2022 8:13	UG		ND	Phenanthrene
TO-13A	20220117-19-SE-SAM1	1/17/2022 8:17	1/19/2022 8:13	UG		ND	Anthracene
TO-13A	20220117-19-SE-SAM1	1/17/2022 8:17	1/19/2022 8:13	UG		ND	Fluoranthene
TO-13A	20220117-19-SE-SAM1	1/17/2022 8:17	1/19/2022 8:13	UG		ND	Pyrene
TO-13A	20220117-19-SE-SAM1	1/17/2022 8:17	1/19/2022 8:13	UG		ND	Chrysene
TO-13A	20220117-19-SE-SAM1	1/17/2022 8:17	1/19/2022 8:13	UG		ND	Benzo(a)anthracene
TO-13A	20220117-19-SE-SAM1	1/17/2022 8:17	1/19/2022 8:13	UG		ND	Benzo(b)fluoranthene
TO-13A	20220117-19-SE-SAM1	1/17/2022 8:17	1/19/2022 8:13	UG		ND	Benzo(k)fluoranthene
TO-13A	20220117-19-SE-SAM1	1/17/2022 8:17	1/19/2022 8:13	UG		ND	Benzo(a)pyrene
TO-13A	20220117-19-SE-SAM1	1/17/2022 8:17	1/19/2022 8:13	UG		ND	Indeno(1,2,3-c,d)pyrene
TO-13A	20220117-19-SE-SAM1	1/17/2022 8:17	1/19/2022 8:13	UG		ND	Dibenz(a,h)anthracene
TO-13A	20220117-19-SE-SAM1	1/17/2022 8:17	1/19/2022 8:13	UG		ND	Benzo(g,h,i)perylene
TO-13A	20220117-19-SE-SAM1	1/17/2022 8:17	1/19/2022 8:13	%R	69		Fluorene-d10
TO-13A	20220117-19-SE-SAM1	1/17/2022 8:17	1/19/2022 8:13	%R	103		Pyrene-d10
TO-13A	20220117-19-SE-SAM1	1/17/2022 8:17	1/19/2022 8:13	%R	64		Benzo(a)pyrene-d12
TO-13A	20220117-19-SE-SAM1	1/17/2022 8:17	1/19/2022 8:13	%R	63		Fluoranthene-d10
TO-13A	20220117-19-NE-SAM2	1/17/2022 8:00	1/19/2022 7:58	UG		ND	Naphthalene
TO-13A	20220117-19-NE-SAM2	1/17/2022 8:00	1/19/2022 7:58	UG		ND	2-Methylnaphthalene
TO-13A	20220117-19-NE-SAM2	1/17/2022 8:00	1/19/2022 7:58	UG		ND	2-Chloronaphthalene
TO-13A	20220117-19-NE-SAM2	1/17/2022 8:00	1/19/2022 7:58	UG		ND	Acenaphthylene
TO-13A	20220117-19-NE-SAM2	1/17/2022 8:00	1/19/2022 7:58	UG		ND	Acenaphthene
TO-13A	20220117-19-NE-SAM2	1/17/2022 8:00	1/19/2022 7:58	UG		ND	Fluorene
TO-13A	20220117-19-NE-SAM2	1/17/2022 8:00	1/19/2022 7:58	UG		ND	Phenanthrene
TO-13A	20220117-19-NE-SAM2	1/17/2022 8:00	1/19/2022 7:58	UG		ND	Anthracene
TO-13A	20220117-19-NE-SAM2	1/17/2022 8:00	1/19/2022 7:58	UG		ND	Fluoranthene
TO-13A	20220117-19-NE-SAM2	1/17/2022 8:00	1/19/2022 7:58	UG		ND	Pyrene
TO-13A	20220117-19-NE-SAM2	1/17/2022 8:00	1/19/2022 7:58	UG		ND	Chrysene
TO-13A	20220117-19-NE-SAM2	1/17/2022 8:00	1/19/2022 7:58	UG		ND	Benzo(a)anthracene
TO-13A	20220117-19-NE-SAM2	1/17/2022 8:00	1/19/2022 7:58	UG		ND	Benzo(b)fluoranthene
TO-13A	20220117-19-NE-SAM2	1/17/2022 8:00	1/19/2022 7:58	UG		ND	Benzo(k)fluoranthene
TO-13A	20220117-19-NE-SAM2	1/17/2022 8:00	1/19/2022 7:58	UG		ND	Benzo(a)pyrene
TO-13A	20220117-19-NE-SAM2	1/17/2022 8:00	1/19/2022 7:58	UG		ND	Indeno(1,2,3-c,d)pyrene
TO-13A	20220117-19-NE-SAM2	1/17/2022 8:00	1/19/2022 7:58	UG		ND	Dibenz(a,h)anthracene
TO-13A	20220117-19-NE-SAM2	1/17/2022 8:00	1/19/2022 7:58	UG		ND	Benzo(g,h,i)perylene
TO-13A	20220117-19-NE-SAM2	1/17/2022 8:00	1/19/2022 7:58	%R	72		Fluorene-d10
TO-13A	20220117-19-NE-SAM2	1/17/2022 8:00	1/19/2022 7:58	%R	103		Pyrene-d10
TO-13A	20220117-19-NE-SAM2	1/17/2022 8:00	1/19/2022 7:58	%R	78		Benzo(a)pyrene-d12
TO-13A	20220117-19-NE-SAM2	1/17/2022 8:00	1/19/2022 7:58	%R	61		Fluoranthene-d10
TO-13A	20220117-19-SE-SAM3	1/17/2022 8:11	1/19/2022 8:07	UG		ND	Naphthalene
TO-13A	20220117-19-SE-SAM3	1/17/2022 8:11	1/19/2022 8:07	UG		ND	2-Methylnaphthalene
TO-13A	20220117-19-SE-SAM3	1/17/2022 8:11	1/19/2022 8:07	UG		ND	2-Chloronaphthalene
TO-13A	20220117-19-SE-SAM3	1/17/2022 8:11	1/19/2022 8:07	UG		ND	Acenaphthylene
TO-13A	20220117-19-SE-SAM3	1/17/2022 8:11	1/19/2022 8:07	UG		ND	Acenaphthene
TO-13A	20220117-19-SE-SAM3	1/17/2022 8:11	1/19/2022 8:07	UG		ND	Fluorene
TO-13A	20220117-19-SE-SAM3	1/17/2022 8:11	1/19/2022 8:07	UG		ND	Phenanthrene
TO-13A	20220117-19-SE-SAM3	1/17/2022 8:11	1/19/2022 8:07	UG		ND	Anthracene
TO-13A	20220117-19-SE-SAM3	1/17/2022 8:11	1/19/2022 8:07	UG		ND	Fluoranthene
TO-13A	20220117-19-SE-SAM3	1/17/2022 8:11	1/19/2022 8:07	UG		ND	Pyrene
TO-13A	20220117-19-SE-SAM3	1/17/2022 8:11	1/19/2022 8:07	UG		ND	Chrysene
TO-13A	20220117-19-SE-SAM3	1/17/2022 8:11	1/19/2022 8:07	UG		ND	Benzo(a)anthracene
TO-13A	20220117-19-SE-SAM3	1/17/2022 8:11	1/19/2022 8:07	UG		ND	Benzo(b)fluoranthene

## Appendix B. Complete Preliminary Lab Result Data

METHOD	Sample			Units	Results	Data Flags	Compound Name
	ID	Start Date/Time	End Date/Time				
TO-13A	20220117-19-SE-SAM3	1/17/2022 8:11	1/19/2022 8:07	UG		ND	Benzo(k)fluoranthene
TO-13A	20220117-19-SE-SAM3	1/17/2022 8:11	1/19/2022 8:07	UG		ND	Benzo(a)pyrene
TO-13A	20220117-19-SE-SAM3	1/17/2022 8:11	1/19/2022 8:07	UG		ND	Indeno(1,2,3-c,d)pyrene
TO-13A	20220117-19-SE-SAM3	1/17/2022 8:11	1/19/2022 8:07	UG		ND	Dibenz(a,h)anthracene
TO-13A	20220117-19-SE-SAM3	1/17/2022 8:11	1/19/2022 8:07	UG		ND	Benzo(g,h,i)perylene
TO-13A	20220117-19-SE-SAM3	1/17/2022 8:11	1/19/2022 8:07	%R	67		Fluorene-d10
TO-13A	20220117-19-SE-SAM3	1/17/2022 8:11	1/19/2022 8:07	%R	98		Pyrene-d10
TO-13A	20220117-19-SE-SAM3	1/17/2022 8:11	1/19/2022 8:07	%R	67		Benzo(a)pyrene-d12
TO-13A	20220117-19-SE-SAM3	1/17/2022 8:11	1/19/2022 8:07	%R	60		Fluoranthene-d10
TO-13A	20220117-19-NW-SAM4	1/17/2022 8:39	1/19/2022 8:32	UG	4.5		Naphthalene
TO-13A	20220117-19-NW-SAM4	1/12/2022 8:39	1/19/2022 8:32	UG		ND	2-Methylnaphthalene
TO-13A	20220117-19-NW-SAM4	1/12/2022 8:39	1/19/2022 8:32	UG		ND	2-Chloronaphthalene
TO-13A	20220117-19-NW-SAM4	1/12/2022 8:39	1/19/2022 8:32	UG		ND	Acenaphthylene
TO-13A	20220117-19-NW-SAM4	1/12/2022 8:39	1/19/2022 8:32	UG		ND	Acenaphthene
TO-13A	20220117-19-NW-SAM4	1/12/2022 8:39	1/19/2022 8:32	UG		ND	Fluorene
TO-13A	20220117-19-NW-SAM4	1/12/2022 8:39	1/19/2022 8:32	UG		ND	Phenanthrene
TO-13A	20220117-19-NW-SAM4	1/12/2022 8:39	1/19/2022 8:32	UG		ND	Anthracene
TO-13A	20220117-19-NW-SAM4	1/12/2022 8:39	1/19/2022 8:32	UG		ND	Fluoranthene
TO-13A	20220117-19-NW-SAM4	1/12/2022 8:39	1/19/2022 8:32	UG		ND	Pyrene
TO-13A	20220117-19-NW-SAM4	1/12/2022 8:39	1/19/2022 8:32	UG		ND	Chrysene
TO-13A	20220117-19-NW-SAM4	1/12/2022 8:39	1/19/2022 8:32	UG		ND	Benzo(a)anthracene
TO-13A	20220117-19-NW-SAM4	1/12/2022 8:39	1/19/2022 8:32	UG		ND	Benzo(b)fluoranthene
TO-13A	20220117-19-NW-SAM4	1/12/2022 8:39	1/19/2022 8:32	UG		ND	Benzo(k)fluoranthene
TO-13A	20220117-19-NW-SAM4	1/12/2022 8:39	1/19/2022 8:32	UG		ND	Benzo(a)pyrene
TO-13A	20220117-19-NW-SAM4	1/12/2022 8:39	1/19/2022 8:32	UG		ND	Indeno(1,2,3-c,d)pyrene
TO-13A	20220117-19-NW-SAM4	1/12/2022 8:39	1/19/2022 8:32	UG		ND	Dibenz(a,h)anthracene
TO-13A	20220117-19-NW-SAM4	1/12/2022 8:39	1/19/2022 8:32	UG		ND	Benzo(g,h,i)perylene
TO-13A	20220117-19-NW-SAM4	1/12/2022 8:39	1/19/2022 8:32	%R	74		Fluorene-d10
TO-13A	20220117-19-NW-SAM4	1/12/2022 8:39	1/19/2022 8:32	%R	114		Pyrene-d10
TO-13A	20220117-19-NW-SAM4	1/12/2022 8:39	1/19/2022 8:32	%R	63		Benzo(a)pyrene-d12
TO-13A	20220117-19-NW-SAM4	1/12/2022 8:39	1/19/2022 8:32	%R	65		Fluoranthene-d10
TO-13A	20220117-19-SW-SAM5	1/12/2022 8:17	1/19/2022 8:23	UG		ND	Naphthalene
TO-13A	20220117-19-SW-SAM5	1/12/2022 8:17	1/19/2022 8:23	UG		ND	2-Methylnaphthalene
TO-13A	20220117-19-SW-SAM5	1/12/2022 8:17	1/19/2022 8:23	UG		ND	2-Chloronaphthalene
TO-13A	20220117-19-SW-SAM5	1/12/2022 8:17	1/19/2022 8:23	UG		ND	Acenaphthylene
TO-13A	20220117-19-SW-SAM5	1/12/2022 8:17	1/19/2022 8:23	UG		ND	Acenaphthene
TO-13A	20220117-19-SW-SAM5	1/12/2022 8:17	1/19/2022 8:23	UG		ND	Fluorene
TO-13A	20220117-19-SW-SAM5	1/12/2022 8:17	1/19/2022 8:23	UG		ND	Phenanthrene
TO-13A	20220117-19-SW-SAM5	1/12/2022 8:17	1/19/2022 8:23	UG		ND	Anthracene
TO-13A	20220117-19-SW-SAM5	1/12/2022 8:17	1/19/2022 8:23	UG		ND	Fluoranthene
TO-13A	20220117-19-SW-SAM5	1/12/2022 8:17	1/19/2022 8:23	UG		ND	Pyrene
TO-13A	20220117-19-SW-SAM5	1/12/2022 8:17	1/19/2022 8:23	UG		ND	Chrysene
TO-13A	20220117-19-SW-SAM5	1/12/2022 8:17	1/19/2022 8:23	UG		ND	Benzo(a)anthracene
TO-13A	20220117-19-SW-SAM5	1/12/2022 8:17	1/19/2022 8:23	UG		ND	Benzo(b)fluoranthene
TO-13A	20220117-19-SW-SAM5	1/12/2022 8:17	1/19/2022 8:23	UG		ND	Benzo(k)fluoranthene
TO-13A	20220117-19-SW-SAM5	1/12/2022 8:17	1/19/2022 8:23	UG		ND	Benzo(a)pyrene
TO-13A	20220117-19-SW-SAM5	1/12/2022 8:17	1/19/2022 8:23	UG		ND	Indeno(1,2,3-c,d)pyrene
TO-13A	20220117-19-SW-SAM5	1/12/2022 8:17	1/19/2022 8:23	UG		ND	Dibenz(a,h)anthracene
TO-13A	20220117-19-SW-SAM5	1/12/2022 8:17	1/19/2022 8:23	UG		ND	Benzo(g,h,i)perylene
TO-13A	20220117-19-SW-SAM5	1/12/2022 8:17	1/19/2022 8:23	%R	81		Fluorene-d10
TO-13A	20220117-19-SW-SAM5	1/12/2022 8:17	1/19/2022 8:23	%R	120		Pyrene-d10
TO-13A	20220117-19-SW-SAM5	1/12/2022 8:17	1/19/2022 8:23	%R	76		Benzo(a)pyrene-d12
TO-13A	20220117-19-SW-SAM5	1/12/2022 8:17	1/19/2022 8:23	%R	73		Fluoranthene-d10
TO-13A	20220117-19-SAM6	1/12/2022 8:00	1/19/2022 8:45	UG		ND	Naphthalene
TO-13A	20220117-19-SAM6	1/12/2022 8:00	1/19/2022 8:45	UG		ND	2-Methylnaphthalene
TO-13A	20220117-19-SAM6	1/12/2022 8:00	1/19/2022 8:45	UG		ND	2-Chloronaphthalene
TO-13A	20220117-19-SAM6	1/12/2022 8:00	1/19/2022 8:45	UG		ND	Acenaphthylene

Appendix B. Complete Preliminary Lab Result Data

METHOD	Sample			Units	Results	Data Flags	Compound Name
	ID	Start Date/Time	End Date/Time				
TO-13A	20220117-19-SAM6	1/12/2022 8:00	1/19/2022 8:45	UG		ND	Acenaphthene
TO-13A	20220117-19-SAM6	1/12/2022 8:00	1/19/2022 8:45	UG		ND	Fluorene
TO-13A	20220117-19-SAM6	1/12/2022 8:00	1/19/2022 8:45	UG		ND	Phenanthrene
TO-13A	20220117-19-SAM6	1/12/2022 8:00	1/19/2022 8:45	UG		ND	Anthracene
TO-13A	20220117-19-SAM6	1/12/2022 8:00	1/19/2022 8:45	UG		ND	Fluoranthene
TO-13A	20220117-19-SAM6	1/12/2022 8:00	1/19/2022 8:45	UG		ND	Pyrene
TO-13A	20220117-19-SAM6	1/12/2022 8:00	1/19/2022 8:45	UG		ND	Chrysene
TO-13A	20220117-19-SAM6	1/12/2022 8:00	1/19/2022 8:45	UG		ND	Benzo(a)anthracene
TO-13A	20220117-19-SAM6	1/12/2022 8:00	1/19/2022 8:45	UG		ND	Benzo(b)fluoranthene
TO-13A	20220117-19-SAM6	1/12/2022 8:00	1/19/2022 8:45	UG		ND	Benzo(k)fluoranthene
TO-13A	20220117-19-SAM6	1/12/2022 8:00	1/19/2022 8:45	UG		ND	Benzo(a)pyrene
TO-13A	20220117-19-SAM6	1/12/2022 8:00	1/19/2022 8:45	UG		ND	Indeno(1,2,3-c,d)pyrene
TO-13A	20220117-19-SAM6	1/12/2022 8:00	1/19/2022 8:45	UG		ND	Dibenz(a,h)anthracene
TO-13A	20220117-19-SAM6	1/12/2022 8:00	1/19/2022 8:45	UG		ND	Benzo(g,h,i)perylene
TO-13A	20220117-19-SAM6	1/12/2022 8:00	1/19/2022 8:45	%R	75		Fluorene-d10
TO-13A	20220117-19-SAM6	1/12/2022 8:00	1/19/2022 8:45	%R	101		Pyrene-d10
TO-13A	20220117-19-SAM6	1/12/2022 8:00	1/19/2022 8:45	%R	72		Benzo(a)pyrene-d12
TO-13A	20220117-19-SAM6	1/12/2022 8:00	1/19/2022 8:45	%R	64		Fluoranthene-d10

ND - Non Detect

E - Exceeds instrument calibration range

Q - Exceeds quality control limits

S - Saturated peak

J - Estimated value

B - Compound present in laboratory blank greater than reporting limit (background subtraction not performed)

U - Compound analyzed for but not detected above the reporting limit, LOD, or MDL value. See data page for project specific U-flag definition

N - The identification is based on presumptive evidence.

## Appendix B. Complete Preliminary Lab Result Data

METHOD	Sample			Units	Results	Data Flags	Compound Name
	ID	Start Date/Time	End Date/Time				
TO-13A	20220119-21-SE-SAM1	1/19/2022 8:53	1/21/2022 8:53	UG		ND	Naphthalene
TO-13A	20220119-21-SE-SAM1	1/19/2022 8:53	1/21/2022 8:53	UG		ND	2-Methylnaphthalene
TO-13A	20220119-21-SE-SAM1	1/19/2022 8:53	1/21/2022 8:53	UG		ND	2-Chloronaphthalene
TO-13A	20220119-21-SE-SAM1	1/19/2022 8:53	1/21/2022 8:53	UG		ND	Acenaphthylene
TO-13A	20220119-21-SE-SAM1	1/19/2022 8:53	1/21/2022 8:53	UG		ND	Acenaphthene
TO-13A	20220119-21-SE-SAM1	1/19/2022 8:53	1/21/2022 8:53	UG		ND	Fluorene
TO-13A	20220119-21-SE-SAM1	1/19/2022 8:53	1/21/2022 8:53	UG		ND	Phenanthrene
TO-13A	20220119-21-SE-SAM1	1/19/2022 8:53	1/21/2022 8:53	UG		ND	Anthracene
TO-13A	20220119-21-SE-SAM1	1/19/2022 8:53	1/21/2022 8:53	UG		ND	Fluoranthene
TO-13A	20220119-21-SE-SAM1	1/19/2022 8:53	1/21/2022 8:53	UG		ND	Pyrene
TO-13A	20220119-21-SE-SAM1	1/19/2022 8:53	1/21/2022 8:53	UG		ND	Chrysene
TO-13A	20220119-21-SE-SAM1	1/19/2022 8:53	1/21/2022 8:53	UG		ND	Benzo(a)anthracene
TO-13A	20220119-21-SE-SAM1	1/19/2022 8:53	1/21/2022 8:53	UG		ND	Benzo(b)fluoranthene
TO-13A	20220119-21-SE-SAM1	1/19/2022 8:53	1/21/2022 8:53	UG		ND	Benzo(k)fluoranthene
TO-13A	20220119-21-SE-SAM1	1/19/2022 8:53	1/21/2022 8:53	UG		ND	Benzo(a)pyrene
TO-13A	20220119-21-SE-SAM1	1/19/2022 8:53	1/21/2022 8:53	UG		ND	Indeno(1,2,3-c,d)pyrene
TO-13A	20220119-21-SE-SAM1	1/19/2022 8:53	1/21/2022 8:53	UG		ND	Dibenz(a,h)anthracene
TO-13A	20220119-21-SE-SAM1	1/19/2022 8:53	1/21/2022 8:53	UG		ND	Benzo(g,h,i)perylene
TO-13A	20220119-21-SE-SAM1	1/19/2022 8:53	1/21/2022 8:53	%R	64		Fluorene-d10
TO-13A	20220119-21-SE-SAM1	1/19/2022 8:53	1/21/2022 8:53	%R	85		Pyrene-d10
TO-13A	20220119-21-SE-SAM1	1/19/2022 8:53	1/21/2022 8:53	%R	73		Benzo(a)pyrene-d12
TO-13A	20220119-21-SE-SAM1	1/19/2022 8:53	1/21/2022 8:53	%R	56		Fluoranthene-d10
TO-13A	20220119-21-NE-SAM2	1/19/2022 8:48	1/21/2022 8:34	UG		ND	Naphthalene
TO-13A	20220119-21-NE-SAM2	1/19/2022 8:48	1/21/2022 8:34	UG		ND	2-Methylnaphthalene
TO-13A	20220119-21-NE-SAM2	1/19/2022 8:48	1/21/2022 8:34	UG		ND	2-Chloronaphthalene
TO-13A	20220119-21-NE-SAM2	1/19/2022 8:48	1/21/2022 8:34	UG		ND	Acenaphthylene
TO-13A	20220119-21-NE-SAM2	1/19/2022 8:48	1/21/2022 8:34	UG		ND	Acenaphthene
TO-13A	20220119-21-NE-SAM2	1/19/2022 8:48	1/21/2022 8:34	UG		ND	Fluorene
TO-13A	20220119-21-NE-SAM2	1/19/2022 8:48	1/21/2022 8:34	UG		ND	Phenanthrene
TO-13A	20220119-21-NE-SAM2	1/19/2022 8:48	1/21/2022 8:34	UG		ND	Anthracene
TO-13A	20220119-21-NE-SAM2	1/19/2022 8:48	1/21/2022 8:34	UG		ND	Fluoranthene
TO-13A	20220119-21-NE-SAM2	1/19/2022 8:48	1/21/2022 8:34	UG		ND	Pyrene
TO-13A	20220119-21-NE-SAM2	1/19/2022 8:48	1/21/2022 8:34	UG		ND	Chrysene
TO-13A	20220119-21-NE-SAM2	1/19/2022 8:48	1/21/2022 8:34	UG		ND	Benzo(a)anthracene
TO-13A	20220119-21-NE-SAM2	1/19/2022 8:48	1/21/2022 8:34	UG		ND	Benzo(b)fluoranthene
TO-13A	20220119-21-NE-SAM2	1/19/2022 8:48	1/21/2022 8:34	UG		ND	Benzo(k)fluoranthene
TO-13A	20220119-21-NE-SAM2	1/19/2022 8:48	1/21/2022 8:34	UG		ND	Benzo(a)pyrene
TO-13A	20220119-21-NE-SAM2	1/19/2022 8:48	1/21/2022 8:34	UG		ND	Indeno(1,2,3-c,d)pyrene
TO-13A	20220119-21-NE-SAM2	1/19/2022 8:48	1/21/2022 8:34	UG		ND	Dibenz(a,h)anthracene
TO-13A	20220119-21-NE-SAM2	1/19/2022 8:48	1/21/2022 8:34	UG		ND	Benzo(g,h,i)perylene
TO-13A	20220119-21-NE-SAM2	1/19/2022 8:48	1/21/2022 8:34	%R	72		Fluorene-d10
TO-13A	20220119-21-NE-SAM2	1/19/2022 8:48	1/21/2022 8:34	%R	97		Pyrene-d10
TO-13A	20220119-21-NE-SAM2	1/19/2022 8:48	1/21/2022 8:34	%R	69		Benzo(a)pyrene-d12
TO-13A	20220119-21-NE-SAM2	1/19/2022 8:48	1/21/2022 8:34	%R	60		Fluoranthene-d10
TO-13A	20220119-21-SE-SAM3	1/19/2022 8:48	1/21/2022 8:34	UG		ND	Naphthalene
TO-13A	20220119-21-SE-SAM3	1/19/2022 8:50	1/21/2022 8:40	UG		ND	2-Methylnaphthalene
TO-13A	20220119-21-SE-SAM3	1/19/2022 8:50	1/21/2022 8:40	UG		ND	2-Chloronaphthalene
TO-13A	20220119-21-SE-SAM3	1/19/2022 8:50	1/21/2022 8:40	UG		ND	Acenaphthylene
TO-13A	20220119-21-SE-SAM3	1/19/2022 8:50	1/21/2022 8:40	UG		ND	Acenaphthene
TO-13A	20220119-21-SE-SAM3	1/19/2022 8:50	1/21/2022 8:40	UG		ND	Fluorene
TO-13A	20220119-21-SE-SAM3	1/19/2022 8:50	1/21/2022 8:40	UG		ND	Phenanthrene
TO-13A	20220119-21-SE-SAM3	1/19/2022 8:50	1/21/2022 8:40	UG		ND	Anthracene
TO-13A	20220119-21-SE-SAM3	1/19/2022 8:50	1/21/2022 8:40	UG		ND	Fluoranthene
TO-13A	20220119-21-SE-SAM3	1/19/2022 8:50	1/21/2022 8:40	UG		ND	Pyrene
TO-13A	20220119-21-SE-SAM3	1/19/2022 8:50	1/21/2022 8:40	UG		ND	Chrysene
TO-13A	20220119-21-SE-SAM3	1/19/2022 8:50	1/21/2022 8:40	UG		ND	Benzo(a)anthracene
TO-13A	20220119-21-SE-SAM3	1/19/2022 8:50	1/21/2022 8:40	UG		ND	Benzo(b)fluoranthene

## Appendix B. Complete Preliminary Lab Result Data

METHOD	Sample			Units	Results	Data Flags	Compound Name
	ID	Start Date/Time	End Date/Time				
TO-13A	20220119-21-SE-SAM3	1/19/2022 8:50	1/21/2022 8:40	UG		ND	Benzo(k)fluoranthene
TO-13A	20220119-21-SE-SAM3	1/19/2022 8:50	1/21/2022 8:40	UG		ND	Benzo(a)pyrene
TO-13A	20220119-21-SE-SAM3	1/19/2022 8:50	1/21/2022 8:40	UG		ND	Indeno(1,2,3-c,d)pyrene
TO-13A	20220119-21-SE-SAM3	1/19/2022 8:50	1/21/2022 8:40	UG		ND	Dibenz(a,h)anthracene
TO-13A	20220119-21-SE-SAM3	1/19/2022 8:50	1/21/2022 8:40	UG		ND	Benzo(g,h,i)perylene
TO-13A	20220119-21-SE-SAM3	1/19/2022 8:50	1/21/2022 8:40	%R	72		Fluorene-d10
TO-13A	20220119-21-SE-SAM3	1/19/2022 8:50	1/21/2022 8:40	%R	97		Pyrene-d10
TO-13A	20220119-21-SE-SAM3	1/19/2022 8:50	1/21/2022 8:40	%R	67		Benzo(a)pyrene-d12
TO-13A	20220119-21-SE-SAM3	1/19/2022 8:50	1/21/2022 8:40	%R	64		Fluoranthene-d10
TO-13A	20220119-21-NW-SAM4	1/19/2022 9:01	1/21/2022 9:09	UG		ND	Naphthalene
TO-13A	20220119-21-NW-SAM4	1/19/2022 9:01	1/21/2022 9:09	UG		ND	2-Methylnaphthalene
TO-13A	20220119-21-NW-SAM4	1/19/2022 9:01	1/21/2022 9:09	UG		ND	2-Chloronaphthalene
TO-13A	20220119-21-NW-SAM4	1/19/2022 9:01	1/21/2022 9:09	UG		ND	Acenaphthylene
TO-13A	20220119-21-NW-SAM4	1/19/2022 9:01	1/21/2022 9:09	UG		ND	Acenaphthene
TO-13A	20220119-21-NW-SAM4	1/19/2022 9:01	1/21/2022 9:09	UG		ND	Fluorene
TO-13A	20220119-21-NW-SAM4	1/19/2022 9:01	1/21/2022 9:09	UG		ND	Phenanthrene
TO-13A	20220119-21-NW-SAM4	1/19/2022 9:01	1/21/2022 9:09	UG		ND	Anthracene
TO-13A	20220119-21-NW-SAM4	1/19/2022 9:01	1/21/2022 9:09	UG		ND	Fluoranthene
TO-13A	20220119-21-NW-SAM4	1/19/2022 9:01	1/21/2022 9:09	UG		ND	Pyrene
TO-13A	20220119-21-NW-SAM4	1/19/2022 9:01	1/21/2022 9:09	UG		ND	Chrysene
TO-13A	20220119-21-NW-SAM4	1/19/2022 9:01	1/21/2022 9:09	UG		ND	Benzo(a)anthracene
TO-13A	20220119-21-NW-SAM4	1/19/2022 9:01	1/21/2022 9:09	UG		ND	Benzo(b)fluoranthene
TO-13A	20220119-21-NW-SAM4	1/19/2022 9:01	1/21/2022 9:09	UG		ND	Benzo(k)fluoranthene
TO-13A	20220119-21-NW-SAM4	1/19/2022 9:01	1/21/2022 9:09	UG		ND	Benzo(a)pyrene
TO-13A	20220119-21-NW-SAM4	1/19/2022 9:01	1/21/2022 9:09	UG		ND	Indeno(1,2,3-c,d)pyrene
TO-13A	20220119-21-NW-SAM4	1/19/2022 9:01	1/21/2022 9:09	UG		ND	Dibenz(a,h)anthracene
TO-13A	20220119-21-NW-SAM4	1/19/2022 9:01	1/21/2022 9:09	UG		ND	Benzo(g,h,i)perylene
TO-13A	20220119-21-NW-SAM4	1/19/2022 9:01	1/21/2022 9:09	%R	73		Fluorene-d10
TO-13A	20220119-21-NW-SAM4	1/19/2022 9:01	1/21/2022 9:09	%R	103		Pyrene-d10
TO-13A	20220119-21-NW-SAM4	1/19/2022 9:01	1/21/2022 9:09	%R	66		Benzo(a)pyrene-d12
TO-13A	20220119-21-NW-SAM4	1/19/2022 9:01	1/21/2022 9:09	%R	63		Fluoranthene-d10
TO-13A	20220119-21-SW-SAM5	1/19/2022 8:58	1/21/2022 9:02	UG		ND	Naphthalene
TO-13A	20220119-21-SW-SAM5	1/19/2022 8:58	1/21/2022 9:02	UG		ND	2-Methylnaphthalene
TO-13A	20220119-21-SW-SAM5	1/19/2022 8:58	1/21/2022 9:02	UG		ND	2-Chloronaphthalene
TO-13A	20220119-21-SW-SAM5	1/19/2022 8:58	1/21/2022 9:02	UG		ND	Acenaphthylene
TO-13A	20220119-21-SW-SAM5	1/19/2022 8:58	1/21/2022 9:02	UG		ND	Acenaphthene
TO-13A	20220119-21-SW-SAM5	1/19/2022 8:58	1/21/2022 9:02	UG		ND	Fluorene
TO-13A	20220119-21-SW-SAM5	1/19/2022 8:58	1/21/2022 9:02	UG		ND	Phenanthrene
TO-13A	20220119-21-SW-SAM5	1/19/2022 8:58	1/21/2022 9:02	UG		ND	Anthracene
TO-13A	20220119-21-SW-SAM5	1/19/2022 8:58	1/21/2022 9:02	UG		ND	Fluoranthene
TO-13A	20220119-21-SW-SAM5	1/19/2022 8:58	1/21/2022 9:02	UG		ND	Pyrene
TO-13A	20220119-21-SW-SAM5	1/19/2022 8:58	1/21/2022 9:02	UG		ND	Chrysene
TO-13A	20220119-21-SW-SAM5	1/19/2022 8:58	1/21/2022 9:02	UG		ND	Benzo(a)anthracene
TO-13A	20220119-21-SW-SAM5	1/19/2022 8:58	1/21/2022 9:02	UG		ND	Benzo(b)fluoranthene
TO-13A	20220119-21-SW-SAM5	1/19/2022 8:58	1/21/2022 9:02	UG		ND	Benzo(k)fluoranthene
TO-13A	20220119-21-SW-SAM5	1/19/2022 8:58	1/21/2022 9:02	UG		ND	Benzo(a)pyrene
TO-13A	20220119-21-SW-SAM5	1/19/2022 8:58	1/21/2022 9:02	UG		ND	Indeno(1,2,3-c,d)pyrene
TO-13A	20220119-21-SW-SAM5	1/19/2022 8:58	1/21/2022 9:02	UG		ND	Dibenz(a,h)anthracene
TO-13A	20220119-21-SW-SAM5	1/19/2022 8:58	1/21/2022 9:02	UG		ND	Benzo(g,h,i)perylene
TO-13A	20220119-21-SW-SAM5	1/19/2022 8:58	1/21/2022 9:02	%R	72		Fluorene-d10
TO-13A	20220119-21-SW-SAM5	1/19/2022 8:58	1/21/2022 9:02	%R	103		Pyrene-d10
TO-13A	20220119-21-SW-SAM5	1/19/2022 8:58	1/21/2022 9:02	%R	72		Benzo(a)pyrene-d12
TO-13A	20220119-21-SW-SAM5	1/19/2022 8:58	1/21/2022 9:02	%R	62		Fluoranthene-d10
TO-13A	20220119-21-SAM6	1/19/2022 9:30	1/21/2022 10:30	UG		ND	Naphthalene
TO-13A	20220119-21-SAM6	1/19/2022 9:30	1/21/2022 10:30	UG		ND	2-Methylnaphthalene
TO-13A	20220119-21-SAM6	1/19/2022 9:30	1/21/2022 10:30	UG		ND	2-Chloronaphthalene
TO-13A	20220119-21-SAM6	1/19/2022 9:30	1/21/2022 10:30	UG		ND	Acenaphthylene

Appendix B. Complete Preliminary Lab Result Data

METHOD	Sample			Units	Results	Data Flags	Compound Name
	ID	Start Date/Time	End Date/Time				
TO-13A	20220119-21-SAM6	1/19/2022 9:30	1/21/2022 10:30	UG		ND	Acenaphthene
TO-13A	20220119-21-SAM6	1/19/2022 9:30	1/21/2022 10:30	UG		ND	Fluorene
TO-13A	20220119-21-SAM6	1/19/2022 9:30	1/21/2022 10:30	UG		ND	Phenanthrene
TO-13A	20220119-21-SAM6	1/19/2022 9:30	1/21/2022 10:30	UG		ND	Anthracene
TO-13A	20220119-21-SAM6	1/19/2022 9:30	1/21/2022 10:30	UG		ND	Fluoranthene
TO-13A	20220119-21-SAM6	1/19/2022 9:30	1/21/2022 10:30	UG		ND	Pyrene
TO-13A	20220119-21-SAM6	1/19/2022 9:30	1/21/2022 10:30	UG		ND	Chrysene
TO-13A	20220119-21-SAM6	1/19/2022 9:30	1/21/2022 10:30	UG		ND	Benzo(a)anthracene
TO-13A	20220119-21-SAM6	1/19/2022 9:30	1/21/2022 10:30	UG		ND	Benzo(b)fluoranthene
TO-13A	20220119-21-SAM6	1/19/2022 9:30	1/21/2022 10:30	UG		ND	Benzo(k)fluoranthene
TO-13A	20220119-21-SAM6	1/19/2022 9:30	1/21/2022 10:30	UG		ND	Benzo(a)pyrene
TO-13A	20220119-21-SAM6	1/19/2022 9:30	1/21/2022 10:30	UG		ND	Indeno(1,2,3-c,d)pyrene
TO-13A	20220119-21-SAM6	1/19/2022 9:30	1/21/2022 10:30	UG		ND	Dibenz(a,h)anthracene
TO-13A	20220119-21-SAM6	1/19/2022 9:30	1/21/2022 10:30	UG		ND	Benzo(g,h,i)perylene
TO-13A	20220119-21-SAM6	1/19/2022 9:30	1/21/2022 10:30	%R	66		Fluorene-d10
TO-13A	20220119-21-SAM6	1/19/2022 9:30	1/21/2022 10:30	%R	95		Pyrene-d10
TO-13A	20220119-21-SAM6	1/19/2022 9:30	1/21/2022 10:30	%R	60		Benzo(a)pyrene-d12
TO-13A	20220119-21-SAM6	1/19/2022 9:30	1/21/2022 10:30	%R	54		Fluoranthene-d10

ND - Non Detect

E - Exceeds instrument calibration range

Q - Exceeds quality control limits

S - Saturated peak

J - Estimated value

B - Compound present in laboratory blank greater than reporting limit (background subtraction not performed)

U - Compound analyzed for but not detected above the reporting limit, LOD, or MDL value. See data page for project specific U-flag

N - The identification is based on presumptive evidence.

---

**ERM has over 160 offices across the following countries and territories worldwide**

Argentina	The Netherlands
Australia	New Zealand
Belgium	Norway
Brazil	Panama
Canada	Peru
Chile	Poland
China	Portugal
Colombia	Puerto Rico
France	Romania
Germany	Russia
Ghana	Senegal
Guyana	Singapore
Hong Kong	South Africa
India	South Korea
Indonesia	Spain
Ireland	Sweden
Italy	Switzerland
Japan	Taiwan
Kazakhstan	Tanzania
Kenya	Thailand
Malaysia	UAE
Mexico	UK
Mozambique	US
Myanmar	Vietnam

**ERM Rolling Meadows**

One Continental Towers  
1701 Golf Road, Suite 1-700  
Rolling Meadows, IL 60008

T: +1 847 258 8900

F: +1 847 713-4813

[www.erm.com](http://www.erm.com)