

## Net Metering FAQ

### Why does my bill sometimes reference “Summer” and “Non-Summer”?

Your rates change during certain times of the year. Our non-summer months are between October 1 and May 31. The summer months are any day between June 1 to September 30.

### I’m on Power Smart Pricing or Real Time Pricing — why doesn’t my bill look like the examples?

If you receive supply service under an hourly rate, like Rider PSP for Power Smart Pricing or Rider RTP for Real Time Pricing, the netting of supply and transmission charges is calculated each hour, while the netting of delivery service charges is calculated based on the total kWh used and produced each month.

### The “Delivery Net Billable kWh” is not showing the excess generation in the Electric Delivery section of my bill (Sample Bill 2, #6). Why?

If a rebate is received for the generator on your property, you will no longer receive any netting of delivery service charges from any generated electricity in excess of your usage. You’ll only receive netting of your supply and transmission service charges, but any excess generation will no longer expire annually — they’ll continue to be available to you and any subsequent customers at your property.

### How will my monthly Budget Billing payment amount be affected?

Budget Billing is designed to provide you with certainty and consistency, so there won’t be any immediate change to your monthly payment amount. However, if your monthly electric charges decrease due to the output of your generator, your monthly Budget Billing payment amount will be adjusted in future months to reflect those reductions. Adjustments occur every four months to ensure that your payments reflect your energy usage.



CPR 136 REV 12/2022

# Understanding Your Bill

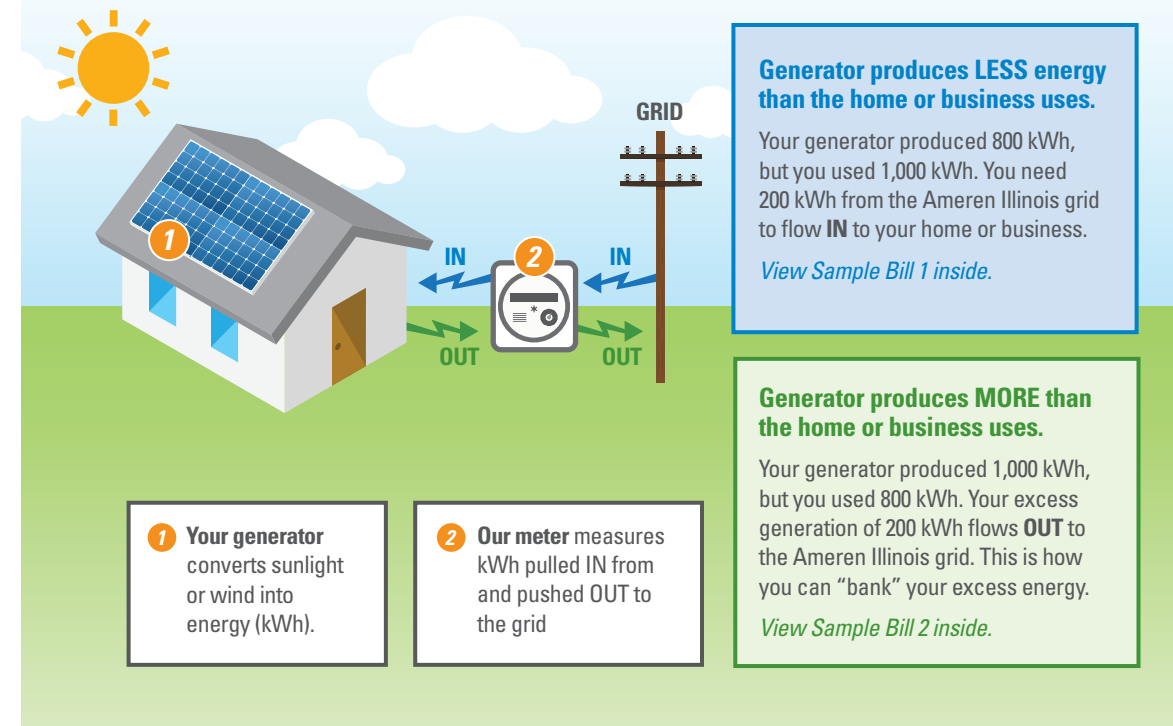


## Net Metering (on-site)

As a net metering residential or small commercial (DS1/DS2) customer, you benefit with less recorded usage at your meter, which lowers your bill. You also benefit by “banking” any excess generation that you do not use.

This guide will help you understand how both benefits are calculated on your monthly net metering bill. Review each chart below to see how the energy flows from your generator to your home. Notice how more or less energy used than what your generator produced will determine if the energy flows IN to your home or business, or OUT to the Ameren Illinois grid.

### The flow of energy determines how your monthly bill is calculated.



# Sample Bill 1

Generator produces LESS energy than the home or business uses.

kWh IN

This example shows that you do not have any excess generation and the "Delivery/Supply Carryover Gen kWh" will show zero.

- 1 Start here.** This is the total usage we measured this month. Think of it as kWh "in."
- 2 Then go here.** This is the total excess kWh sent to the grid. Think of it as kWh "out." Your generator produced more than this, but that electricity was used by your home or business and never made it "out."
- 3 But wait!** You had usage in your "bank" — "Del Prior Carryover Gen," from a **previous month** where you produced more than you used.
- 4 Here is your total net usage** for the month (excludes carryover generation). This is "Total kWh" in minus "On-Site Excess Gen kWh" out (1,730-634=1,096).

### Usage Summary

Total kWh	1730.0000	Summer kWh	1730.0000
On-Site Excess Gen kWh	-634.0000	Delivery Net Total kWh	1096.0000
Del Prior Carryover Gen	-240.0000	Delivery Net Billable kWh	856.0000
Delivery Carryover Gen kWh	0.0000	Del Net Summer kWh	856.0000
Supply Net Total kWh	1096.0000	Supply Prior Carryover Gen	-240.0000
Supply Net Billable kWh	856.0000	Supply Carryover Gen kWh	0.0000
Supply Net Summer kWh	856.0000		

For billing purposes, we take your "Total kWh" minus your "On-Site Excess Gen kWh" and your banked "Del Prior Carryover Gen" (1,730-634-240=856).

CHARGE DESCRIPTION	USAGE UNIT	RATE	CHARGE
<b>Electric Delivery</b>			
Ameren Illinois Customer Charge			\$6.34
Ameren Illinois Meter Charge			\$4.76
DS-1 Residential Delivery Service Distribution Delivery Charge Summer	856.00 kWh	@ \$ 0.05550000	\$47.51
<b>Electric Delivery</b>			<b>\$58.61</b>

**6 Note:** Your Customer and Meter charges aren't changed by the kWh you use each month, so they're not affected by the netting calculation.

CHARGE DESCRIPTION	USAGE UNIT	RATE	CHARGE
<b>Electric Supply</b>			
Ameren Illinois Purchased Electric Summer	856.00 kWh	@ \$ 0.08765000	\$75.03
Ameren Illinois Purchased Electricity Adjustment	856.00 kWh	@ \$-0.00040531	\$-0.35
BGS-1 ME Basic Generation Supply Cost Adjustment	856.00 kWh	@ \$ 0.00243000	\$2.09
Service Transmission Service Charge	856.00 kWh	@ \$ 0.01620000	\$13.87
<b>Electric Supply</b>			<b>\$90.64</b>

CHARGE DESCRIPTION	USAGE UNIT	RATE	CHARGE
<b>State and Local Taxes and Other Mandated Charges</b>			
Customer Generation Charge			\$0.10
Clean Energy Assistance Charge	856.00 kWh	@ \$ 0.00177000	\$1.52
Renewable Energy Adjustment*	856.00 kWh	@ \$ 0.00458000	\$3.92
EDT Cost Recovery	856.00 kWh	@ \$ 0.00124840	\$1.07
Electric Environmental Adjustment	856.00 kWh	@ \$ 0.00019380	\$0.17
Energy Efficiency Programs Charge	856.00 kWh	@ \$ 0.00248000	\$2.12
Energy Transition Assistance Charge*	856.00 kWh	@ \$ 0.00072000	\$0.62
Nebo Municipal Tax			\$2.69
Illinois State Electricity Excise Tax			\$2.82
<b>Total Taxes and Other Charges</b>			<b>\$15.03</b>

# Sample Bill 2

Generator produces MORE energy than the home or business uses.

kWh OUT

This example shows that you have excess generation and the "Delivery/Supply Carryover Gen kWh" will show the excess amount in your bank next month.

- 1 Start here.** This is the total usage we measured this month. Think of it as kWh "in."
- 2 Then go here.** This is the total excess kWh sent to the grid. Think of it as kWh "out." Your generator produced more than this, but that electricity was used by your home or business and never made it "out."
- 3 But wait!** You had usage in your "bank" — "Del Prior Carryover Gen," from a **previous month** where you produced more than you used.
- 4 Here is your total net usage** for the month (excludes carryover generation). This is "Total kWh" in minus "On-Site Excess Gen kWh" out (718-427=291).

### Usage Summary

Total kWh	718.0000	Non-Summer kWh	718.0000
On-Site Excess Gen kWh	-427.0000	Delivery Net Total kWh	291.0000
Del Prior Carryover Gen	-638.0000	Delivery Net Billable kWh	0.0000
Delivery Carryover Gen kWh	-347.0000	Supply Net Total kWh	291.0000
Supply Prior Carryover Gen	-638.0000	Supply Net Billable kWh	0.0000
Supply Carryover Gen kWh	-347.0000		

Smart Meter Net Metering-Method A/C-Non-TOU-Apr

**5 Here's what your "bank" shows.** The "Delivery/Supply Carryover Gen kWh" is the amount remaining in your bank that can be used next month. Add your "On-Site Excess Gen kWh" to your "Del Prior Carryover Gen" and subtract your "Total kWh" (427+638=1,065; 1,065-718=347).

**6** The "Delivery Net Billable kWh" equals zero due to your "On-Site Excess Gen kWh" and "Del Prior Carryover Gen" totaling 1,065, which exceeds 718 kWh used this month.

CHARGE DESCRIPTION	USAGE UNIT	RATE	CHARGE
<b>Electric Delivery</b>			
Ameren Illinois Customer Charge			\$4.02
Ameren Illinois Meter Charge			\$3.01
DS-1 Residential Delivery Service	No Distribution Delivery charges.		
<b>Electric Delivery</b>			<b>\$7.03</b>

**7 Note:** Your Customer and Meter charges aren't changed by the kWh you use each month, so they're not affected by the netting calculation.

CHARGE DESCRIPTION	USAGE UNIT	RATE	CHARGE
<b>Electric Supply</b>			
Ameren Illinois Purchased Electricity Adjustment	0.00 kWh	@ \$-0.00059000	\$0.00
BGS-1 ME Basic Generation Service	0 (zero) kWh times any supply charge equals no supply charge.		
<b>Electric Supply</b>			<b>\$0.00</b>

CHARGE DESCRIPTION	USAGE UNIT	RATE	CHARGE
<b>State and Local Taxes and Other Mandated Charges</b>			
Customer Generation Charge			\$0.06
<b>Total Taxes and Other Charges</b>			<b>\$0.06</b>