



# IN YOUR NEIGHBORHOOD

EMPOWERING OUR COMMUNITY

MARCH 2025

Residential Customers 1.800.755.5000

• Business Customers 1.800.232.2477

• Call JULIE Before You Dig at 811



## Spring into Savings

It's been said that March comes in like a lion, and goes out like a lamb, with more than a few fluctuations along the way. The volatile weather that spring brings makes a smart thermostat an even smarter choice. Using a programmable thermostat can reduce your annual heating and cooling costs by as much as 10%.

Spring is also a good time to clean and inspect your air conditioning unit to ensure it is ready for summer. Clear away leaves and debris in and around the unit, replace the air filter inside your house, and schedule a professional inspection to ensure your unit works efficiently when summer kicks into high gear.

## ICC APPROVES AMEREN ILLINOIS' ELECTRIC RELIABILITY PLAN

In December 2024, the Illinois Commerce Commission (ICC) approved Ameren Illinois' four-year electric reliability plan and an associated revenue plan that establishes delivery service rates through 2027. This is the company's first multi-year plan approved under the state's Climate and Equitable Jobs Act (CEJA).

The plan approved by the ICC prioritizes core infrastructure work, such as grid modernization, replacement of aging infrastructure, preventative maintenance, and automation. It also directs more than half of the electric system upgrades to benefit equity investment eligible customers and customers living in equity-eligible communities.

Our focus at Ameren Illinois remains on modernizing the grid to keep it reliable and resilient in the face of extreme weather events. At the same time, we're supporting the shift from fossil fuels to renewable energy sources to meet the goals of CEJA.

As homes and businesses in our communities generate more of their own power – through solar or wind – the electric grid must be reconfigured to accommodate these various sources of generation and enable a two-way flow of power. We're balancing the infrastructure updates that will enable this transition to clean energy with our duty to ensure that every customer has access to power when they need it.



Visit [AmerenIllinoisSavings.com/Smart](https://AmerenIllinoisSavings.com/Smart) to take advantage of smart thermostat rebates up to \$125!



# AMEREN ILLINOIS DONATES TRUCK TO L&C'S TRUCK DRIVER TRAINING PROGRAM



*Aitor Barrio, Ameren Illinois director of West Region Gas Operations, hands the keys to a 2006 Freightliner construction truck to Kent Ripperda, L&C Truck Driver Training Program coordinator. In the background are, from left, L&C mascot Blazer, L&C Board of Trustees President Dwight Werts and Dr. Ken Trzaska, L&C president.*

Ameren Illinois recently offered a gift to Lewis and Clark Community College that will help students pursuing their Illinois commercial driver's license.

Last December, Ameren Illinois leaders met college officials at the Godfrey campus to hand over the keys to a 2006 Freightliner, a recently retired natural gas construction truck. The truck will be used for skills testing and hands-on driving experience in the college's new Truck Driver Training program.

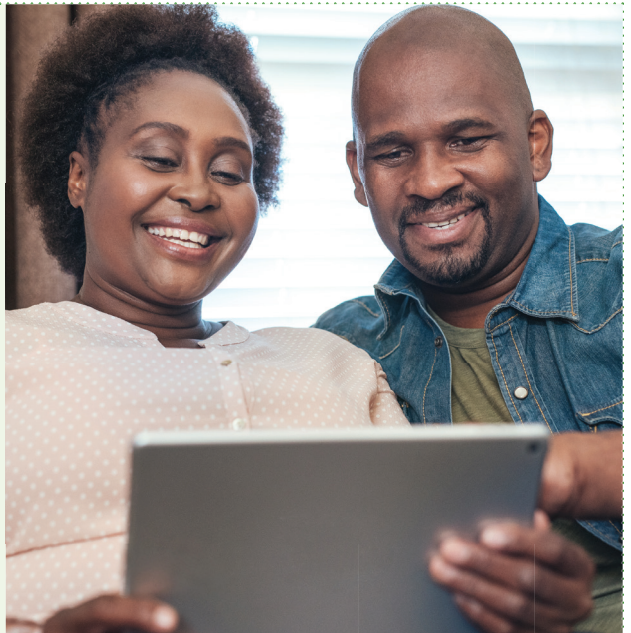
The Ameren Illinois fleet includes nearly 3,300 vehicles, including trucks, trailers and equipment. Vehicles that are being rotated out of the fleet and require minimal repairs or refurbishing are made available for donation to local municipalities or community organizations.

## Need Help With Energy Costs?

**Need some help paying your bill, but not sure what programs you're eligible for?**

Ameren Illinois offers a variety of programs to help individuals and families manage their energy usage and save money. In addition, LIHEAP funding is available to qualified energy customers until August 15, 2025, or until funds are exhausted.

We've designed a new online experience to show all your eligible options organized in one spot. Log in or create an online account to view your personalized list. Visit [AmerenIllinois.com/Assistance](https://AmerenIllinois.com/Assistance) to learn more about the options available to you.



# Madison County Customers Will Benefit from Natural Gas System Upgrades

Along a six-mile stretch near Illinois Route 203, from World Wide Technology Raceway to Granite City near U.S. Steel facilities, Ameren Illinois is upgrading a major natural gas transmission pipeline in Madison County to comply with enhanced federal transmission pipeline regulations established in 2019.

Our crews are replacing 1960s-era pipeline with new steel pipeline, while adding three new regulator stations and two new control valve stations. The work is part of a multi-year plan to ensure that all of our natural gas transmission pipelines comply with the U.S. Department of Transportation's 2035 deadline for overall completion. Madison County work is expected to be complete by early July.

These proactive steps will ensure the continued safe, reliable delivery of natural gas today, while preparing us to meet the future needs of our natural gas customers.



## Flooding Can Lead To Energy Hazards

Flooding and other natural disasters can lead to hidden hazards related to your energy service.

Follow these tips to stay safe after a flood:

- Call Ameren Illinois to have electric service turned off if flood waters are likely to reach service equipment.
- Never enter a flooded basement or any area where water may be in contact with electrical wiring, appliances or other electrical devices.
- If an appliance has been in contact with water, have a professional check it before you attempt to use it.
- If your home suffers structural damage from a disaster and you smell or hear escaping natural gas, immediately evacuate the premises and then **call 911** and Ameren Illinois at **1.800.755.5000**.

## Wooden Spool Donation Benefits Peoria Shelter Dogs

Last year, Ameren Illinois recycled more than 3.6 million pounds of wood waste and diverted more than 5,400 cubic yards of wood waste from landfills, which includes wooden wire spools. Recently, we jumped at the unique opportunity to donate wooden spools to enrich the lives of shelter dogs in Peoria.

The team at the Peoria County Animal Protection Services (PCAPS) incorporated six spools into the shelter's innovative new sensory garden. The dogs will be able to climb and walk on the wooden spools and de-stress during their visits to the sensory garden.

# PLANT THE RIGHT TREE IN THE RIGHT PLACE

Fallen trees and branches are a primary cause of electric power outages. To minimize the likelihood of safety hazards and power outages, we work year-round to keep electric power lines clear of trees and vegetation.

If you are planning to plant new trees this spring, consider tree species, height at maturity, and location. Planting the right tree in the right place will help protect your tree and your electric service.

Avoid planting trees directly beneath power lines, near poles or too close to electrical equipment. When planting in the vicinity of power lines, consider planting small trees or shrubs with a maximum height under 12 feet.

Visit [MySafeTrees.com](https://www.mysafetrees.com) for more information and helpful tips.



## Nature's Insulation

Trees and shrubs offer a truly “green” form of insulation. Carefully placed trees can provide shade from the hot summer sun and block the winter wind — saving up to 25% of a typical home’s energy use. In fact, in tree-shaded neighborhoods, the summer daytime air temperature can be up to 6 degrees cooler than in treeless areas.

Shrubs and ground cover plants also help cool the air before it reaches your home.

## Don't Assume When It Comes To Digging

Homeowners often make risky assumptions about whether they should get their utility lines marked, but every digging job requires a call.

Assuming you know where underground utility lines are located can quickly turn a simple project — like replacing a mailbox post, planting a tree, or installing a fence — into a costly disaster.

Even minor damage to an underground utility can lead to major issues, including power outages, interruption of natural gas service, property destruction, repair costs and fines, personal injury, and in the worst case — death.

Always **call 811** or visit **Illinois1Call.com** at least 48 hours before you dig.

