

PEORIA COUNTY RELIABILITY PROJECT

Improving energy reliability in your community

Ameren Illinois is proposing the Peoria County Reliability Project to improve energy reliability for local customers in the Peoria County area. This Project includes the construction of a new 138 kV transmission line to connect the Alta Substation with the Pioneer Substation. Our goal is to have this new line in service and providing benefits to the local community by December 2025.



Continuing to rely on existing transmission sources in the event of a power outage could result in extended restoration times and community-wide impacts.



This project will help minimize power outage impacts to the local communities by creating additional pathways to support current and future energy needs.



As we continue to serve and invest in our communities, new projects – like the Peoria County Reliability Project – allow us to continue supporting the needs of our customers in your area.

SCHEDULE

**All items shown are pending regulatory approvals. Schedule is subject to change.*

2022

- Engineering and permitting, engagement, proposed route identified

EARLY 2023

- File proposed route with the Illinois Commerce Commission; ICC review process

2023

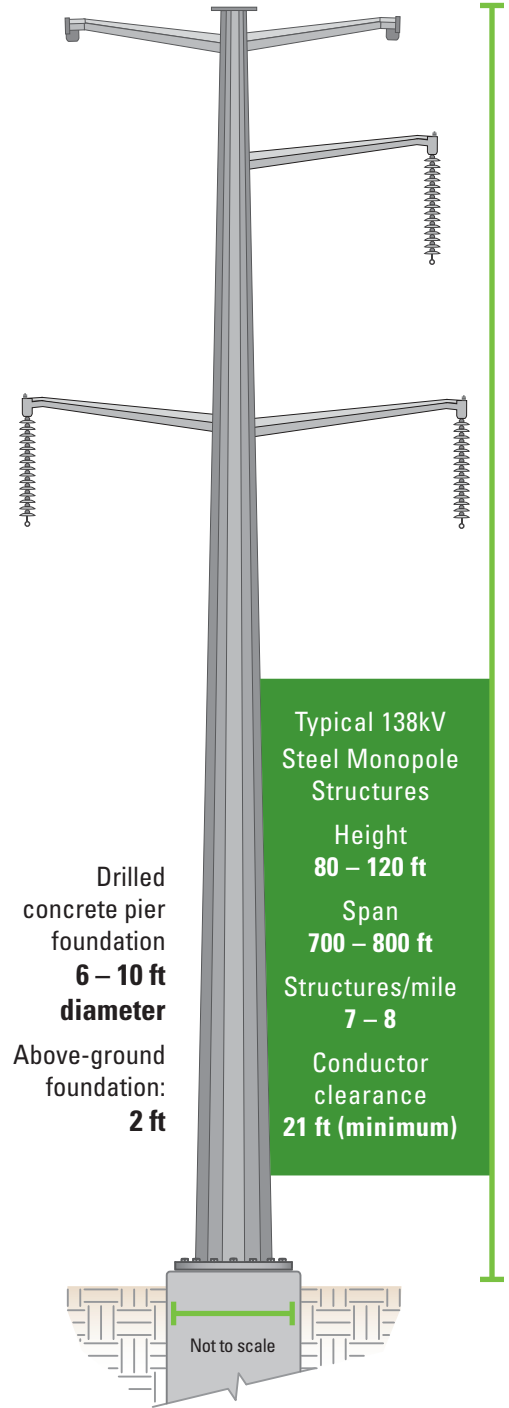
- Surveys
- Real estate
- Environmental
- Easement acquisition

2024

- Construction

2025

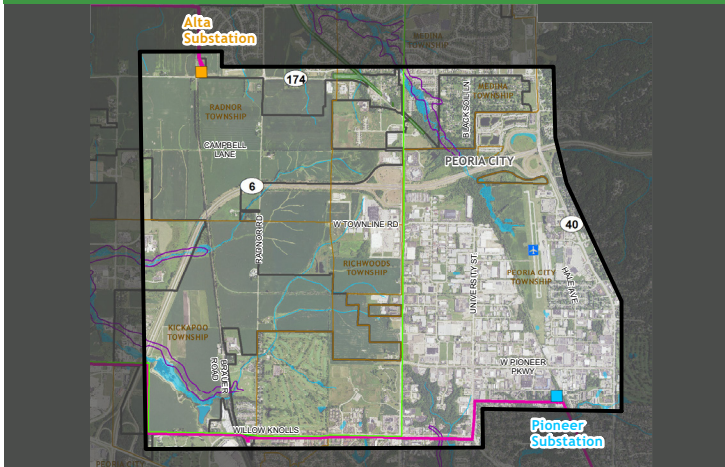
- New line in service



Note, this graphic is not to scale. The number of arms on a typical structure and the sizing of the structure may vary depending on the final route. Currently, there are existing Ameren lines in the area that may provide an opportunity to co-locate the new Peoria County Reliability Project line. This will be determined during the routing process.

ROUTING PROCESS

Step 1: Define Study Area

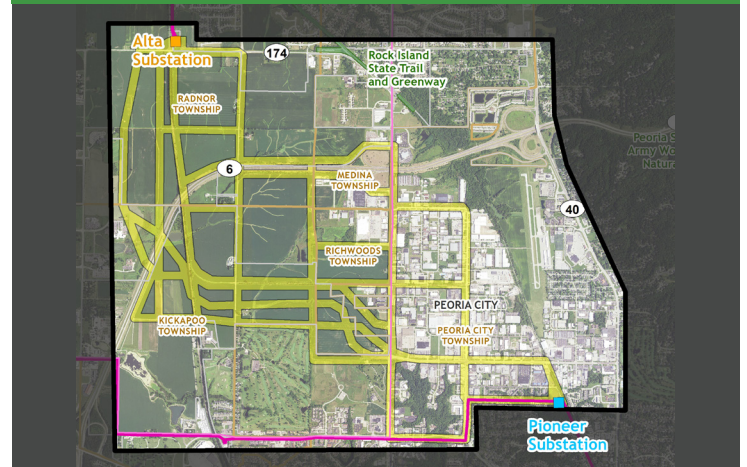


Step 1: Define Study Area

Our team started by using data from publicly available data sources to create our Study Area. We considered existing utility corridors, existing land use, resource areas, natural environment data and field survey data to help minimize impacts while providing a feasible route opportunity.

July – August 2022

Step 2: Develop Route Segments



Step 2: Develop Route Segments

Then our team will use data collected from our stakeholders and federal, state and local agencies and the four categories of routing criteria – Opportunities, Sensitivities, Technical Guidelines, and Statutory Requirements – to develop potential Route Segments.

August – September 2022

THANK YOU! We appreciate the active participation and input community members and stakeholders provided during the first phase of engagement in September 2022. All input received was reviewed and considered during the development of the Preliminary Route Alternatives.

Step 3: Develop Preliminary Route Alternatives

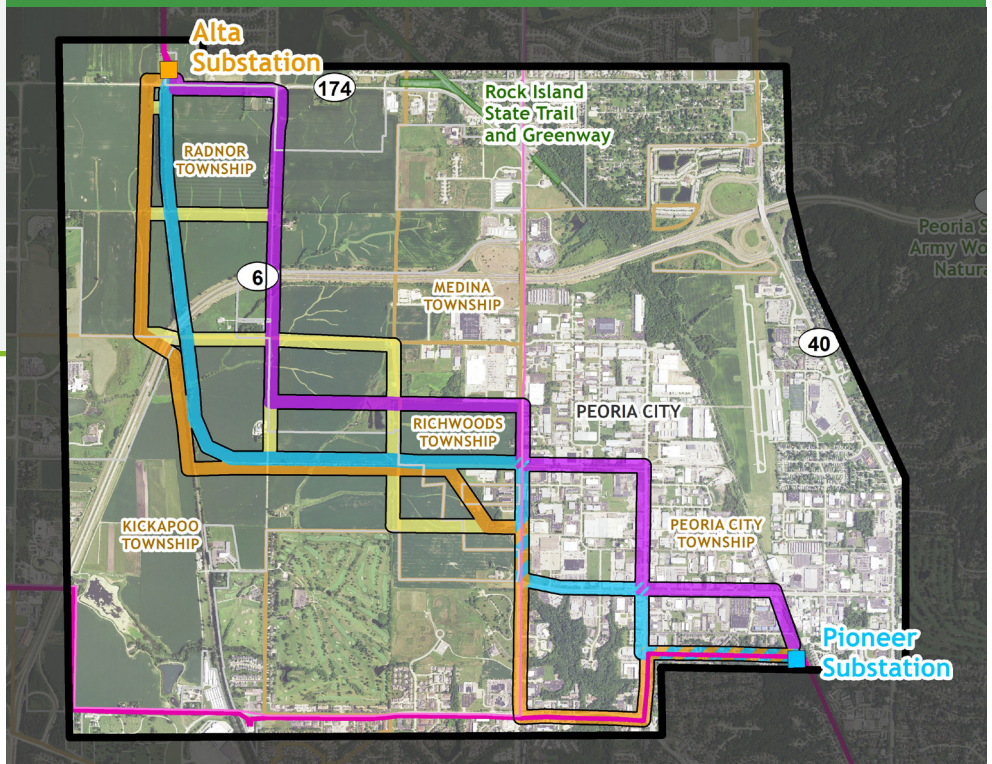
Using the routing criteria, as well as input received from stakeholders and community members during the first phase of public involvement, our team developed Preliminary Route Alternatives.

WE ARE HERE! November 2022



Scan this QR code
with your smartphone
to visit the website

Step 3: Preliminary Route Alternatives - November 2022



For more information about the project and to sign up to receive email updates, please visit:

 PeoriaCountyReliability.com

