

McLean County Reliability REVIEW



November 2019



McLean County Reliability Project
370 Main St.
Decatur, IL 62523

INSIDE THIS ISSUE

- Project Update
- Agricultural Agreement
- Local Vendor Spotlight
- Photo Simulation

LOCAL VENDOR SPOTLIGHT



CONSTRUCTION

Since 1976, L. Keeley Construction has designed and built civil projects with an extensive track record of safe, high-quality completions. Their construction services on the McLean County Reliability Project include preparing access to the right-of-way and pouring concrete foundations.

PHOTO RENDERINGS

Before

After



CONNECT WITH US



mcleancountyreliabilityproject.com



309.319.7186



mcleancountryreliabilityproject@ameren.com

PROJECT UPDATES

Welcome to the second issue of the McLean County Reliability Project Review. We are committed to keeping the community informed as the Project progresses.

Last fall, Ameren Illinois received approval from the Illinois Commerce Commission (ICC) to proceed with the construction of the McLean County Reliability Project. The ICC granted Ameren Illinois a Certificate of Public Convenience and Necessity to build a new, approximately 10-mile, 138kV transmission line, along with associated facilities, to improve energy reliability for local customers. The new line will connect the existing McLean County Substation to the upgraded Normal East Substation located south of I-55. The Project is needed for Ameren Illinois to improve energy reliability and to support continued growth in the area.

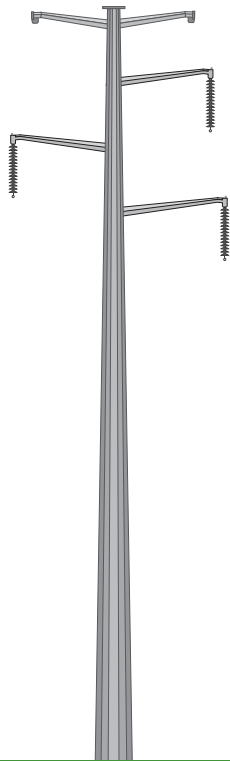
We appreciate the community's cooperation and patience as our pre-construction activities are nearly complete and real estate discussions continue. Our team is currently working with local agencies to review our findings and gather all necessary data and permits. As construction on the McLean Substation will begin this month, you may notice more equipment and traffic in the northwest portion of the Project area.

A special thank you to all landowners for your ongoing collaboration with the Project team during the real estate process. We look forward to working with you during the pre-construction phase of the McLean County Reliability Project.

AGRICULTURAL AGREEMENT

A right-of-way (ROW) easement allows Ameren Illinois to use another person's property, to construct, operate, and maintain a transmission line. Landowners can generally continue to use their property within the ROW as long as it is compatible with the purpose of the easement (i.e. the transmission of electricity).

The ROW needed for transmission line projects varies, but the ROW width needed for the Project is approximately 100 ft.



Right-of-Way
100 ft

Agricultural lands can continue to be farmed and recreational uses of the property continue to be permissible. However there are certain activities and structures that are not allowed within the right-of-way including:

- ✘ homes and other buildings (garages, barns, out-buildings, sheds)
- ✘ above ground fuel tanks
- ✘ signs
- ✘ billboards
- ✘ trees
- ✘ piles of soil
- ✘ debris
- ✘ fences through which Ameren Illinois does not have access

TIMELINE

Data Collection & Analysis

COMPLETE

Preliminary Engineering

COMPLETE

File Certificate with ICC

COMPLETE

ROW & Field Surveys

Nearly COMPLETE



Construction

2019 - 2020

Substation

Fall '19 - Spring '20

Access, clearing and ground survey

Spring '20

Foundations

Spring-Summer '20

Structure assembly and setting

Spring-Summer '20

Wire stringing

Fall '20

In-Service

DECEMBER 2020