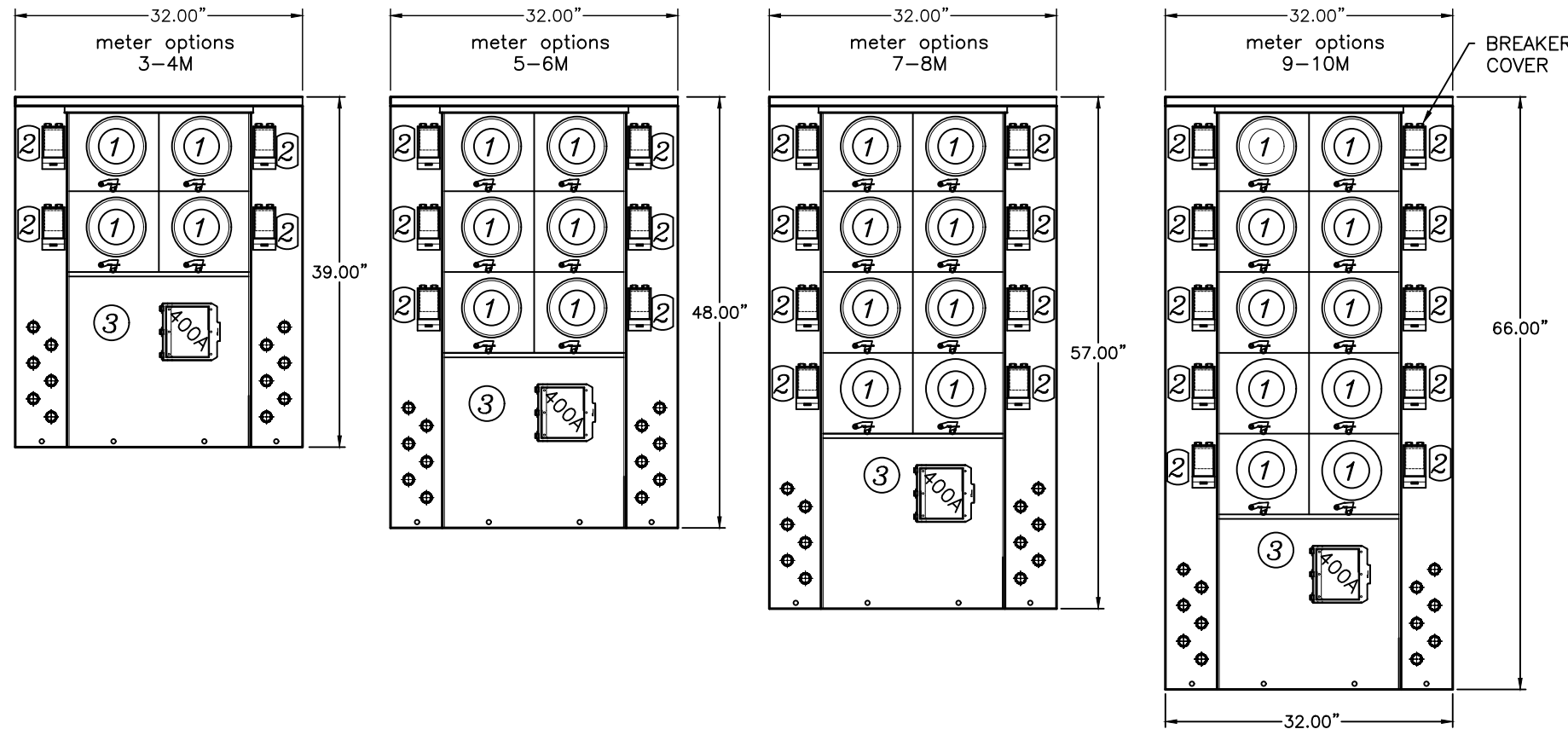
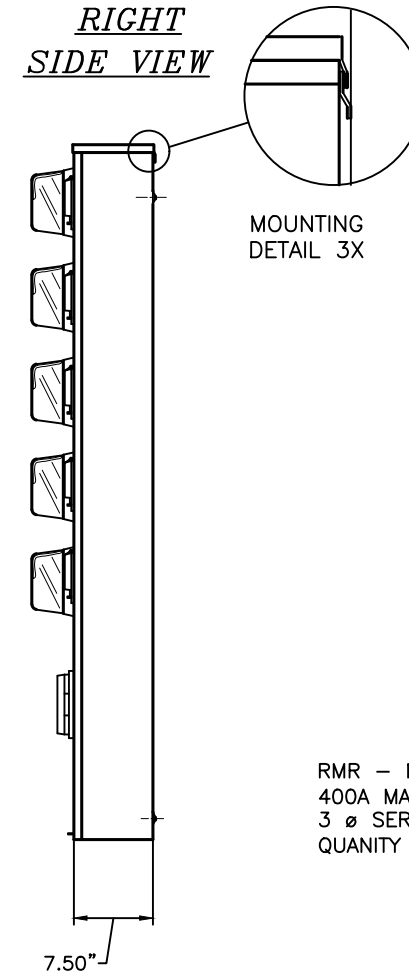


FRONT

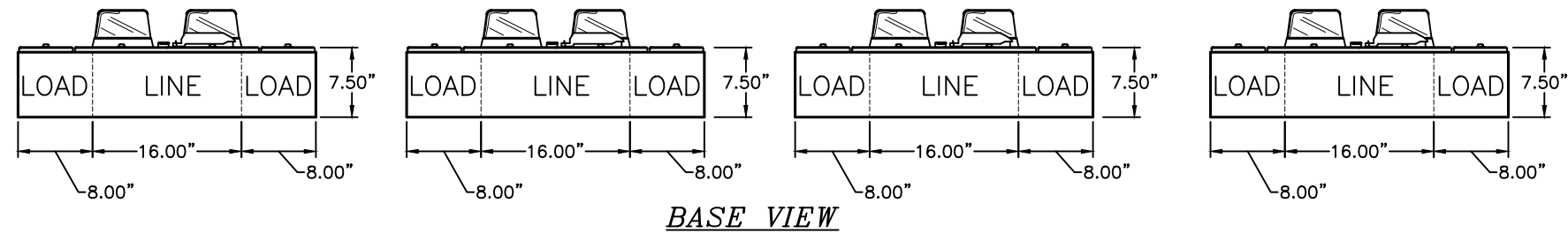


RIGHT SIDE VIEW



BILL OF MATERIALS				
ITEM	QTY	CATALOG NUMBER	DESCRIPTION	SUPPLIER
1	-	-	150A 5T 1Ø LEVER BY-PASS METER SOCKET	-
2	-	-	UP TO 125 AMP CIRCUIT BREAKER 10KAIC	-
3	-	PAT325-2P	400A 2P FUSIBLE CLASS T MAIN FOR 1Ø SERV	BOLTSWITCH
3	-	PAT325	400A 3P FUSIBLE CLASS T MAIN FOR 3Ø SERV	BOLTSWITCH
5				
6				
7				

NOTES:



BASE VIEW

RMR - MULTI METERING
400A MAIN PULL OUT W/400A FUSES
3 Ø SERVICE, 1 Ø LOADS

QUANTITY OF METER SOCKETS	Cat.#
3	RMR3-4M400L
4	RMR4-4M400L
5	RMR5-4M400L
6	RMR6-4M400L
7	RMR7-4M400L
8	RMR8-4M400L
9	RMR9-4M400L
10	RMR10-4M400L

RMR - MULTI METERING
400A MAIN PULL OUT W/400A FUSES
1 Ø Service, 1 Ø LOADS

QUANTITY OF METER SOCKETS	Cat.#
3	RMR3-3M400L
4	RMR4-3M400L
5	RMR5-3M400L
6	RMR6-3M400L
7	RMR7-3M400L
8	RMR8-3M400L
9	RMR9-3M400L
10	RMR10-3M400L

Branch Breaker Mounting Base will accept the following Manufactures Types:

- Square D HomeLine
- Cutler Hammer BR
- GE THQL
- Siemens QP

* FOR OTHER OPTIONS AND ARRANGEMENTS AVAILABLE - CONTACT FACTORY.

NOTE: ALL SOCKETS W/LEVER BYPASS
AND 5TH TERMINAL IN 9 O'CLOCK POSITION

CONSTRUCTION SPECIFICATIONS:

RATINGS IS 400AMP, 240VOLT, 3 PHASE-4 WIRE AND 1 PHASE-3 WIRE, NEMA 1/3R
DUAL RATED AND I_{sc} RATING OF 50KA RMS SYMMETRICAL WITH NO CABLE LASHING REQUIRED, LESS THEN 10KA AT METER SOCKET

CABINETS ARE MADE FROM 14 GAUGE GALVANEAL STEEL. POWDER COAT PAINTED ASA61 GRAY AND ARE TAMPERPROOF
WITH LOCKABLE COVER OVER MAINS & DISCONNECTS.

MAIN IS A BOLTSWITCH PULLOUT TYPE AND WILL ACCEPT CLASS "T" FUSES UP TO 400A, SWITCH CAN BE
PADLOCKED IN THE OPEN OR CLOSED POSITION.

* 400A SWITCHES ARE FURNISHED WITH LINE LUGS FOR
(1) #2 - 500MCM CONNECTOR OR (2) #1/0 - #250MCM CONNECTORS PER PHASE.

WIRING: LINE IS AT THE BOTTOM.
LOAD SIDE WIRE GUTTERS WILL ACCOMMODATE, SIDED REAR, BOTTOM, OR TOP EXIT.

ALL DISCONNECTS ARE U.L. LISTED AND LABELED AS SUITABLE FOR SERVICE ENTRANCE EQUIPMENT PER
U.L. 67. CABINETS MEET ALL NEMA AND NATIONAL ELECTRICAL CODE STANDARD.

Ameren Approved Switchboard - American Midwest Power
480 VOLTS METER CENTER
Reference: AMESWDCTWIN480

THIS DRAWING AND THE INFORMATION THEREON ARE THE PROPERTY OF AMERICAN MIDWEST POWER, AND ARE NOT TO BE COPIED, REPRODUCED, OR DISCLOSED TO OTHERS WITHOUT THE EXPRESS WRITTEN CONSENT OF AMERICAN MIDWEST POWER.					
REV. BY	DATE	DRAWN	DATE	DO NOT SCALE DRAWING	PART NAME
CP	7/9/09	APPROVED	DATE	SCALE 1:1	AMP WEB
CP	4/29/10				MATERIAL GALVANEAL STEEL
CP	4/01/22				PART NUMBER AMEREN-RMR
TDK	07/06/22				LOCATION



AMERICAN MIDWEST POWER
3131 VICKSBURG LANE
MINNEAPOLIS, MINNESOTA
PHONE (763) 551-1555

55447
FAX (763) 551-9275

Ameren Approved Switchboard - American Midwest Power
480 VOLTS Meter Center
Reference: AMESWDCTWIN480

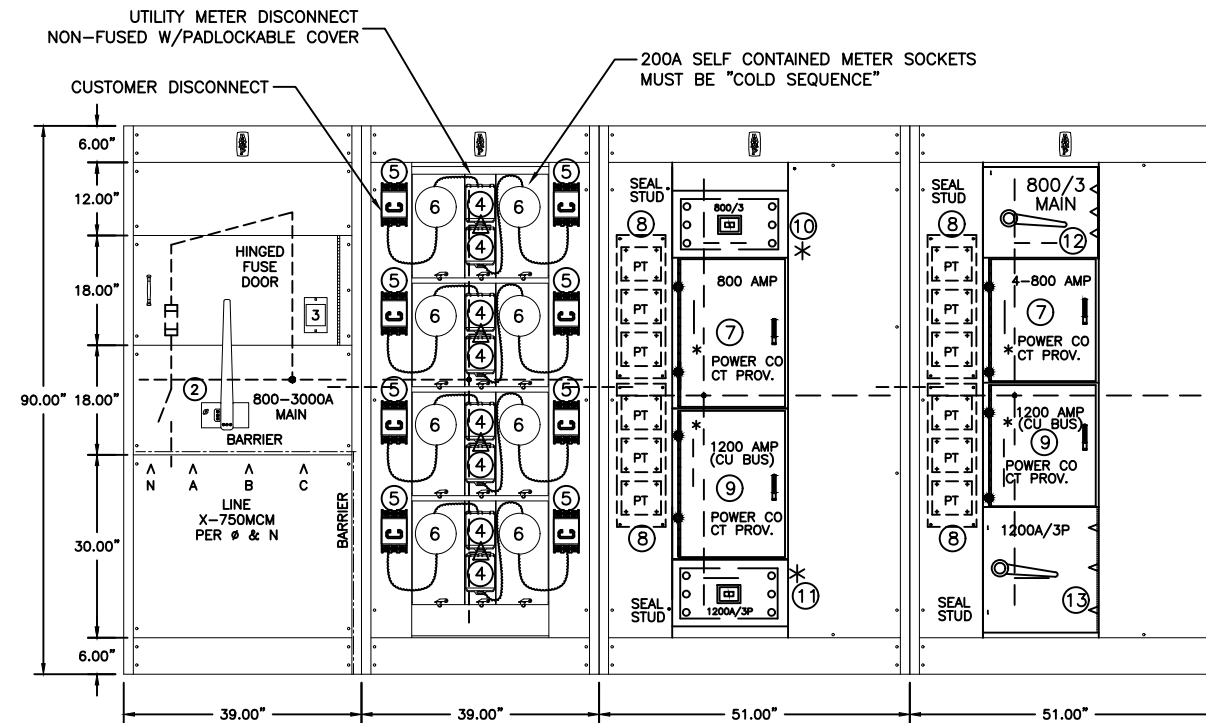


AMERICAN MIDWEST POWER
 3131 VICKSBURG LANE
 MINNEAPOLIS, MINNESOTA 55447
 PHONE (763) 551-1555 FAX (763) 551-9275

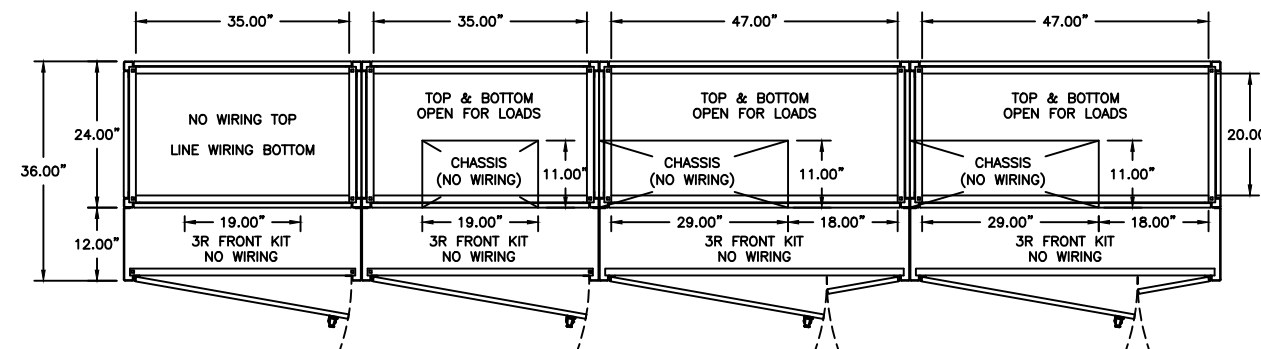
JOB NAME: AMEREN 480V 3Ø 4W PARAMETERS		FILE NUMBER: X
CUSTOMER:		CUSTOMER NUMBER: X
DRAWN BY: TDK	REV DATE: 07/18/22	SCALE: 1:1

THIS DRAWING AND THE INFORMATION THEREON ARE THE PROPERTY OF AMERICAN MIDWEST POWER, AND ARE NOT TO BE COPIED, REPRODUCED, OR DISCLOSED TO OTHERS WITHOUT THE EXPRESS WRITTEN CONSENT OF AMERICAN MIDWEST POWER.

FRONT VIEW SHOWN W/ 3R DOORS REMOVED (NO DOORS & VENTED W/NEMA 1)

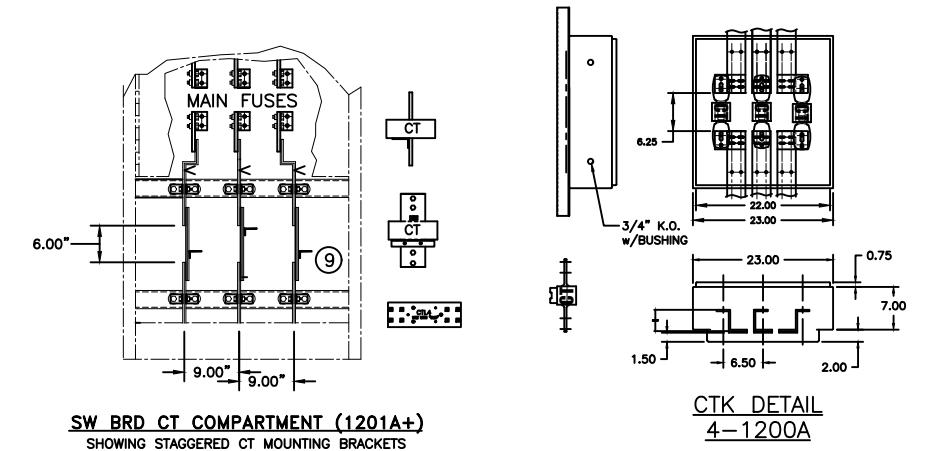
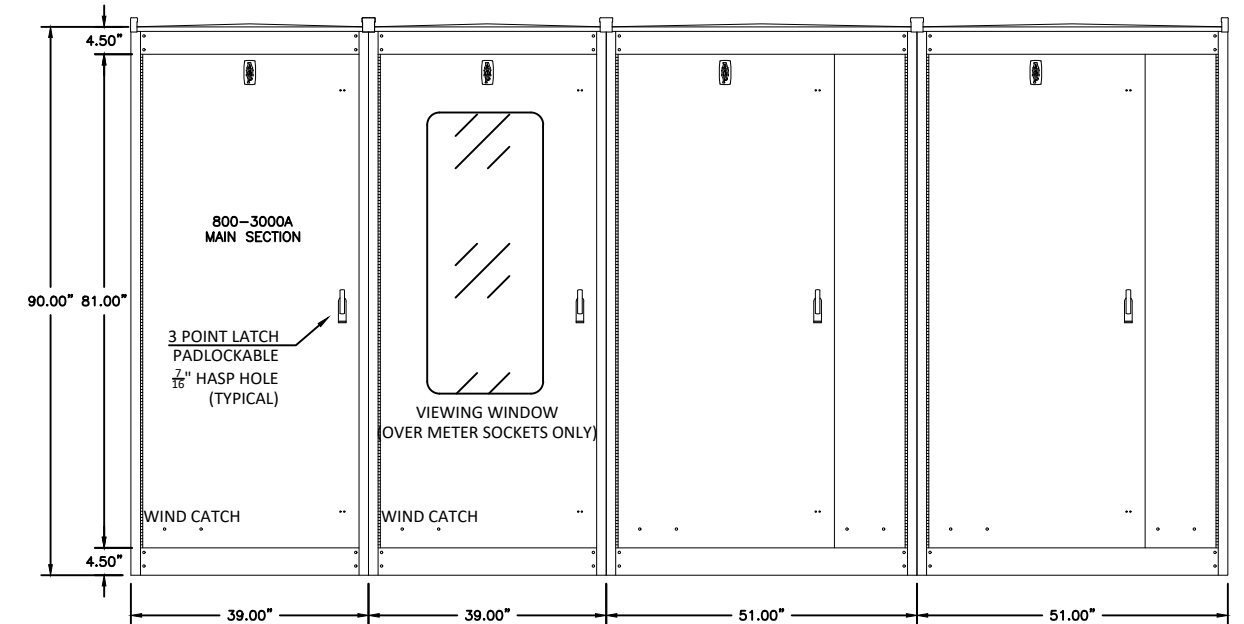


● - HOLES / KNOCKOUTS WITH GROMMETS FOR AMEREN WIRING



* NOTES:
 LUG INCLUDED FOR ALL THREE PHASES AND NEUTRAL ON SOURCE SIDE OF CT'S FOR #12 GA WIRE LEADS FROM PT'S
 ALL CT AND PT COVERS MUST BE HINGED

FRONT VIEW SHOWN W/ 3R DOORS



SW BRD CT COMPARTMENT (1201A+)
 SHOWING STAGGERED CT MOUNTING BRACKETS

CTK DETAIL
 4-1200A

TYPE FMU SWITCHBOARD SPECIFICATION		BILL OF MATERIALS		
ITEM	QTY	CATALOG NUMBER	DESCRIPTION	SUPPLIER
1	X	CT-X	XX0A UTILITY WINDOW TYPE CT COMPARTMENT	AMP
2	X	VLB34X	XX00A/3P MAIN BOLTED PRESSURE SWITCH	BOLTSWITCH
3	X	GFR-1	GROUND FAULT PROTECTION	BOLTSWITCH
4	X	PT364-NF Δ	200A PULLOUT W/ DUMMY FUSES (METER DISC.)	BOLTSWITCH
5	X	PT364	200A CLASS "T" FUSED PULLOUT	BOLTSWITCH
6	X	HQ7	200A 7T 3Ø LEVER BY-PASS METER SOCKET	LANDIS
7	X	CTK4-B	4-800A BAR TYPE CT COMPARTMENT	AMP
8	X	AMECTPT3	UTILITY PT MOUNTING PAN	AMP
9	X	CTK12-SP	1200A BAR TYPE CT COMP CU BUS	AMP
10	X	PDG43N800TAL	800A 3P CIRCUIT BREAKER, THERMAL MAG	EATON
11	X	PDG53N1200E2N	1200A 3P CIRCUIT BREAKER, LSI	EATON
12	X	FDPW367	800A/3P FUSIBLE SWITCH 480V	EATON
13	X	FDPW368	1200A/3P FUSIBLE SWITCH 480V	EATON
14	X	HQ7S	320A 7T 3Ø LEVER BY-PASS METER SOCKET	LANDIS
15	X	H59676	ANTI INVERSION CLIP	LANDIS
16	X	PAT365-NF Δ	400A PULLOUT W/ DUMMY FUSES (METER DISC.)	BOLTSWITCH
16	X	PAT365	400A CLASS "T" FUSED PULLOUT	BOLTSWITCH

NOTES:

AMPS: XX00	VOLTAGE: 480Y/277	SYSTEM: 3Ø 4W	BUS: AL	DATE: 02/23/10	DRAWING NO: X
------------	-------------------	---------------	---------	----------------	---------------