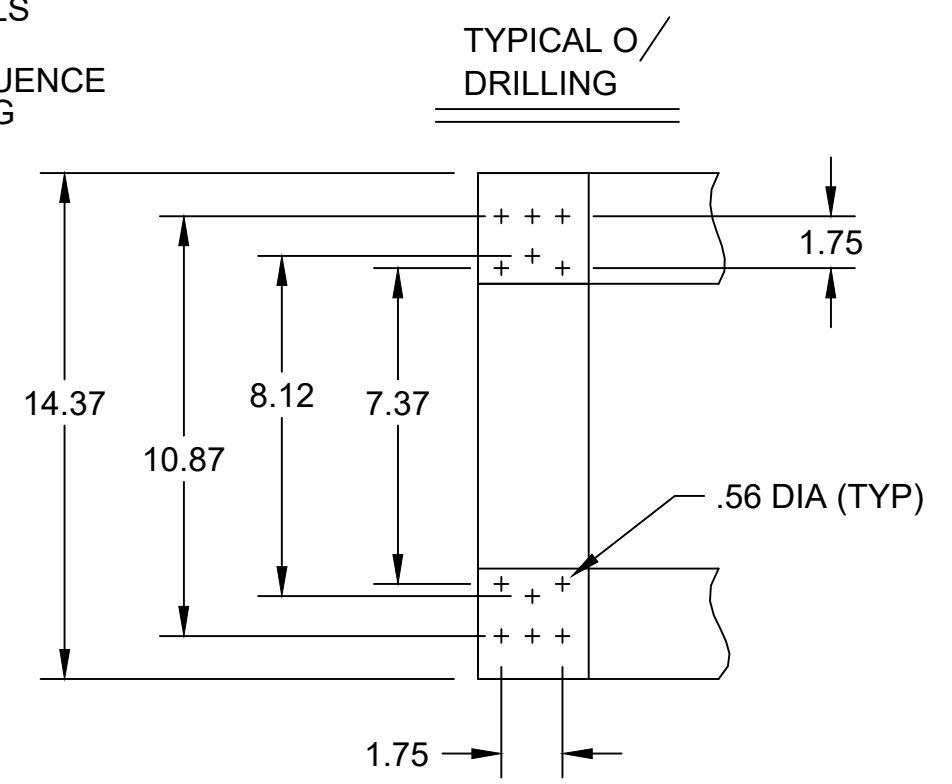


STANDARD INCOMING TERMINALS	
AMPERES	CABLE RANGE
1600	(6) #2-500MCM
2000	(7) #2-500MCM
2500	(8) #2-500MCM
3000	(10) #2-500MCM
4000	(13) #2-500MCM



- NOTES**
- #10 AWG CABLE WILL BE SUPPLIED TO THE GROUND TAP FROM THE STRUCTURE GROUND BUS BY THE MANUFACTURER. GROUND TAP ACCEPTS #10 AWG.
 - CABLE WILL BE SUPPLIED TO THE NEUTRAL TAP FROM THE STRUCTURE NEUTRAL BY THE MANUFACTURER.
 - INCOMING TERMINALS ARE SUPPLIED. REF. TABLE FOR THE STANDARD SIZES.
 - DOUBLE HINGED DOORS WITH PROVISIONS FOR PADLOCKING ON CT & PT COMPARTMENT.
 - TIN PLATED ALUM. BUS IS STANDARD AND COPPER OR SILVER PLATED COPPER IS OPTIONAL.
 - #10-32 TAPPED HOLE WITH LUG FOR POTENTIAL METERING, AND DRILLING FOR JUMPER STUDS ARE PROVIDED.
 - UP TO 2500A 36W MINIMUM, DEPTH IS 30D 3000A / 4000A 45W MINIMUM, DEPTH IS 36D
 - 0.75" HOLE IN POLY BARRIER BETWEEN CT AND PT COMPARTMENT FOR ROUTING WIRING.
 - BARRIER MADE OF GLASS POLYESTER WHEN PT COMPARTMENT IS PRESENT.
 - "AMEREN UTILITY METERING" STICK-ON MICARTA NAMEPLATE AFFIXED TO OUTSIDE AND INSIDE OF CT COMPARTMENT DOOR.

AMPERES	W	A	B	C	D
1600A-2500A	36.00	9.00	6.50	12.43	6.94
3000A-4000A	45.00	11.75	8.25	16.43	10.12

WILL ACCEPT THE FOLLOWING WINDOW STYLE C.T.'s
PRIMARY BAR IS SUPPLIED BY EATON

ABB	G.E.	ITRON	ASTRA
CLC	JCS-O	R6L	AC
	JAD-O		AD
	JAD-OC		
	JAH-O		
	JAF-O		

WILL ACCEPT THE FOLLOWING C.T.'S IN A 45W STRUCTURE

ABB	G.E.	ITRON	ASTRA
CLE	JAD-O	R6L	ACL
	JAD-OC		
	JCB-O		
	JCD-O		
	JCP-O		

WILL ACCEPT UP TO THREE OF THE FOLLOWING P.T.'s

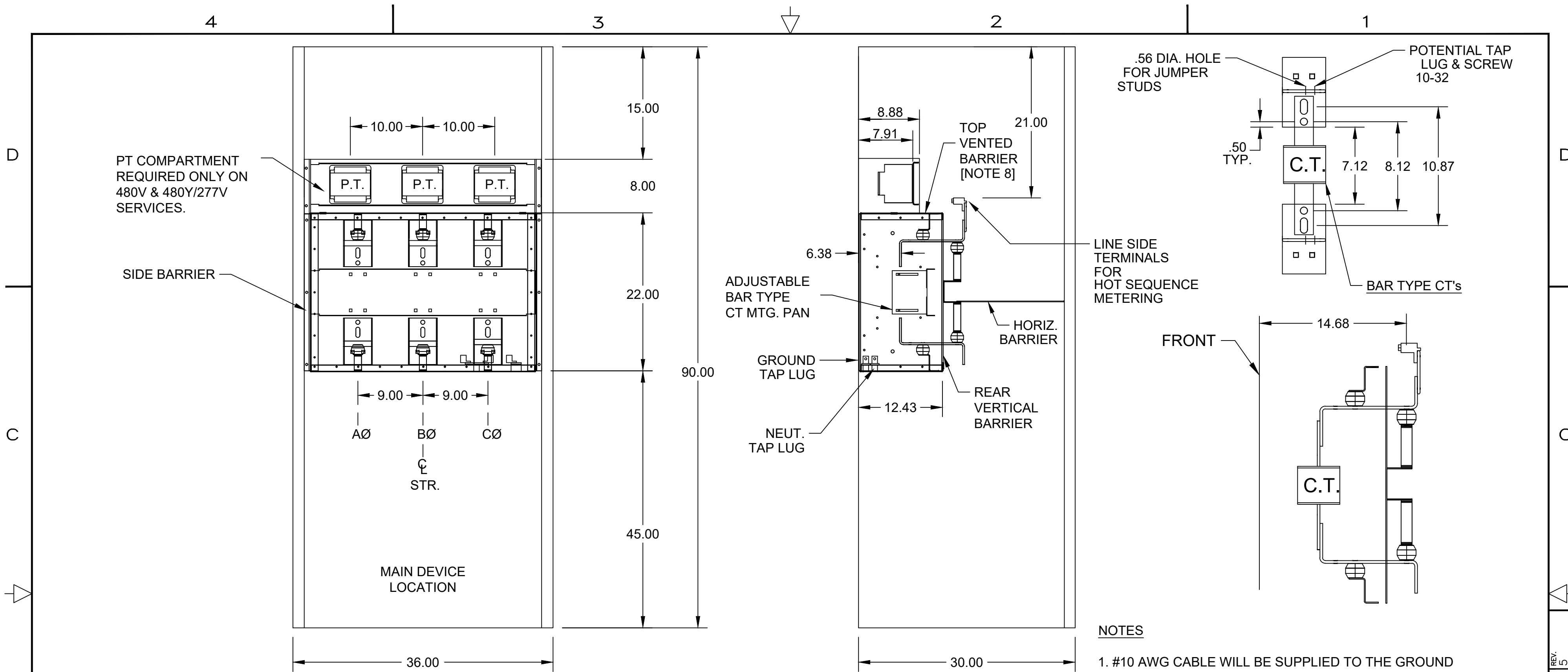
ABB	G.E.	ITRON	ASTRA	ABBOTT MAGNETICS
EMP PPI	JVA-0	T5R	DA	460
EMP PPM	JVA-0C	T6R		
EPM PPX		T7R		

1	2	3	4	5
REVISION	DECR#6111 UPDATED DWG NOTES PER CUSTOMER INPUT CES/DRH 5-27-2014 ZZ 5-27-2014	RR#6196 UPDATED DWG NOTES PER CUSTOMER INPUT REMOVED 4000A CH 1-28-2015	ECR-0025885 YJ 01/13/2022 RH 01/13/2022 AMEREN AMPACITY EXPANDED TO 4000A	CO-0227600 HMC 03/15/2022 RBH 03/15/2022 NOTES ALIGNED.

REF TO DRAWING 5078A01 FOR TOLERANCES. TOP INCOMING 1600-4000A, 480Y/227V

DRAFTER/DESIGNER MLA	DATE 3/20/13	EATON CORPORATION - CONFIDENTIAL AND PROPRIETARY NOTICE TO PERSONS RECEIVING THIS DOCUMENT AND/OR TECHNICAL INFORMATION THIS DOCUMENT INCLUDING THE DRAWING AND INFORMATION CONTAINED THEREON IS CONFIDENTIAL AND IS THE EXCLUSIVE PROPERTY OF EATON CORPORATION, AND IS MERELY ON LOAN AND SUBJECT TO RECALL BY EATON AT ANY TIME. BY TAKING POSSESSION OF THIS DOCUMENT, THE RECIPIENT ACKNOWLEDGES AND AGREES THAT THIS DOCUMENT CANNOT BE USED IN ANY MANNER ADVERSE TO THE INTERESTS OF EATON AND THAT NO PORTION OF THIS DOCUMENT MAY BE COPIED OR OTHERWISE REPRODUCED WITHOUT THE PRIOR WRITTEN CONSENT OF EATON. IN THE CASE OF CONFLICTING CONTRACTUAL PROVISIONS, THIS NOTICE SHALL GOVERN THE STATUS OF THIS DOCUMENT.	EATON
APPD MLA	DATE 3/20/13		
ENGR REF	TITLE AMEREN CT/PT COMPARTMENT HOT SEQUENCE 800A-4000A, 480Y/227V		
NEXT ASSY			

**Ameren Approved Switchboard - Eaton/Cutler Hammer CT/PT Compartment
480Y/277V, 1201 - 4000A Underground Feed
Reference: Eaton #42C5547 (Sheet 3 of 4)**



WILL ACCEPT THE FOLLOWING PRIMARY BAR-TYPE CURRENT TRANSFORMERS.
PRIMARY BAR IS NOT SUPPLIED BY EATON

ABB	G.E.	ITRON	ASTRA
CBH	JAK-O	R6B	AA
CBT	JAK-OC	R6BA	AB
CMF	JCM-O	R6BM	TA
CSF	JCT-O		TAB
	JCW-O		TCB
			TCW

WILL ACCEPT UP TO THREE OF THE FOLLOWING P.T.'s

ABB	G.E.	ITRON	ASTRA	ABBOTT MAGNETICS
EMP PPI	JVA-O	T5R	DA	460
EMP PPM	JVA-OC	T6R		
EMP PPX		T7R		

STANDARD INCOMING TERMINALS

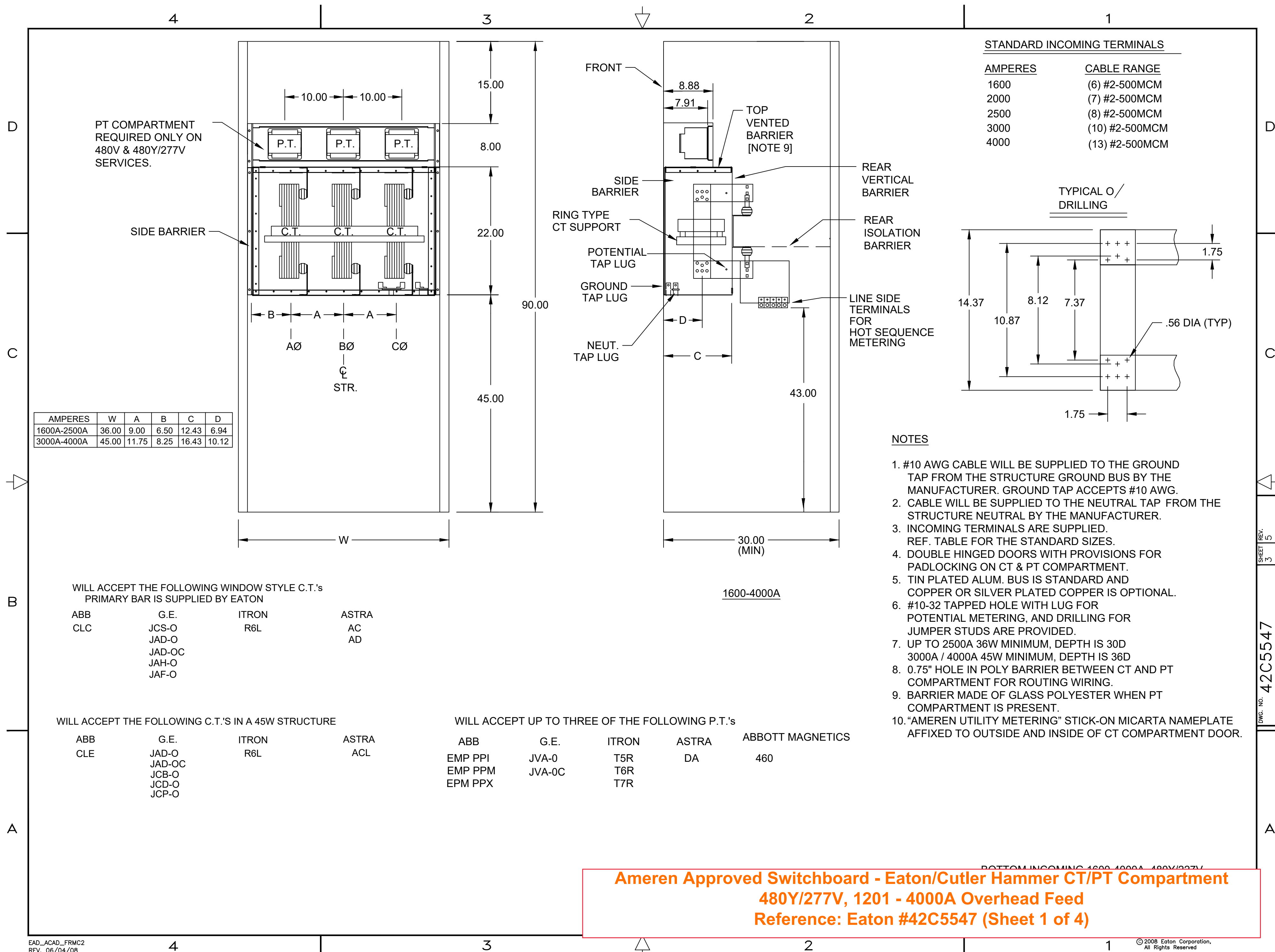
AMPERES	CABLE RANGE
400	(2) #2-500MCM
600	(2) #2-500MCM
800	(3) #2-500MCM
1000	(4) #2-500MCM
1200	(4) #2-500MCM

NOTES

- #10 AWG CABLE WILL BE SUPPLIED TO THE GROUND TAP FROM THE STRUCTURE GROUND BUS BY THE MANUFACTURER. GROUND TAP ACCEPTS #10 AWG.
- CABLE WILL BE SUPPLIED TO THE NEUTRAL TAP FROM THE STRUCTURE NEUTRAL BY THE MANUFACTURER.
- INCOMING TERMINALS ARE SUPPLIED. REF. TABLE FOR THE STANDARD SIZES.
- DOUBLE HINGED DOORS WITH PROVISIONS FOR PADLOCKING ON CT & PT COMPARTMENT.
- TIN PLATED ALUM. BUS IS STANDARD AND COPPER OR SILVER PLATED COPPER IS OPTIONAL.
- #10-32 TAPPED HOLE WITH LUG FOR POTENTIAL METERING, AND DRILLING FOR JUMPER STUDS ARE PROVIDED.
- 0.75" HOLE IN POLY BARRIER BETWEEN CT AND PT COMPARTMENT FOR ROUTING WIRING.
- BARRIER MADE OF GLASS POLYESTER WHEN PT COMPARTMENT IS PRESENT.

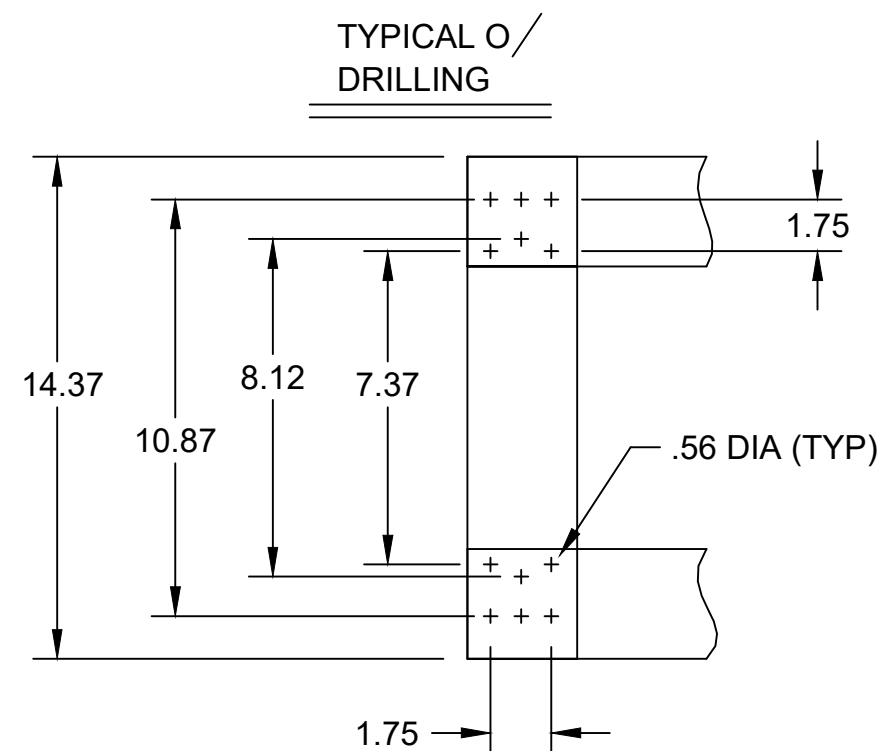
TOP INCOMING 800-1200, 480Y/227V
OVERHEAD FEED WITH MAIN DEVICE

Ameren Approved Switchboard - Eaton/Cutler Hammer CT / PT Compartment
480Y/277V, 800 - 1200A Overhead Feed
Reference: Eaton #43C1731 (Sheet 2 of 4)



STANDARD INCOMING TERMINALS

AMPERES	CABLE RANGE
1600	(6) #2-500MCM
2000	(7) #2-500MCM
2500	(8) #2-500MCM
3000	(10) #2-500MCM
4000	(13) #2-500MCM



AMPERES	W	A	B	C	D
1600A-2500A	36.00	9.00	6.50	12.43	6.94
3000A-4000A	45.00	11.75	8.25	16.43	10.12

- NOTES**
- #10 AWG CABLE WILL BE SUPPLIED TO THE GROUND TAP FROM THE STRUCTURE GROUND BUS BY THE MANUFACTURER. GROUND TAP ACCEPTS #10 AWG.
 - CABLE WILL BE SUPPLIED TO THE NEUTRAL TAP FROM THE STRUCTURE NEUTRAL BY THE MANUFACTURER.
 - INCOMING TERMINALS ARE SUPPLIED. REF. TABLE FOR THE STANDARD SIZES.
 - DOUBLE HINGED DOORS WITH PROVISIONS FOR PADLOCKING ON CT & PT COMPARTMENT.
 - TIN PLATED ALUM. BUS IS STANDARD AND COPPER OR SILVER PLATED COPPER IS OPTIONAL.
 - #10-32 TAPPED HOLE WITH LUG FOR POTENTIAL METERING, AND DRILLING FOR JUMPER STUDS ARE PROVIDED.
 - UP TO 2500A 36W MINIMUM, DEPTH IS 30D 3000A / 4000A 45W MINIMUM, DEPTH IS 36D
 - 0.75" HOLE IN POLY BARRIER BETWEEN CT AND PT COMPARTMENT FOR ROUTING WIRING.
 - BARRIER MADE OF GLASS POLYESTER WHEN PT COMPARTMENT IS PRESENT.
 - "AMEREN UTILITY METERING" STICK-ON MICARTA NAMEPLATE AFFIXED TO OUTSIDE AND INSIDE OF CT COMPARTMENT DOOR.

WILL ACCEPT THE FOLLOWING WINDOW STYLE C.T.'s
PRIMARY BAR IS SUPPLIED BY EATON

ABB	G.E.	ITRON	ASTRA
CLC	JCS-O	R6L	AC
	JAD-O		AD
	JAD-OC		
	JAH-O		
	JAF-O		

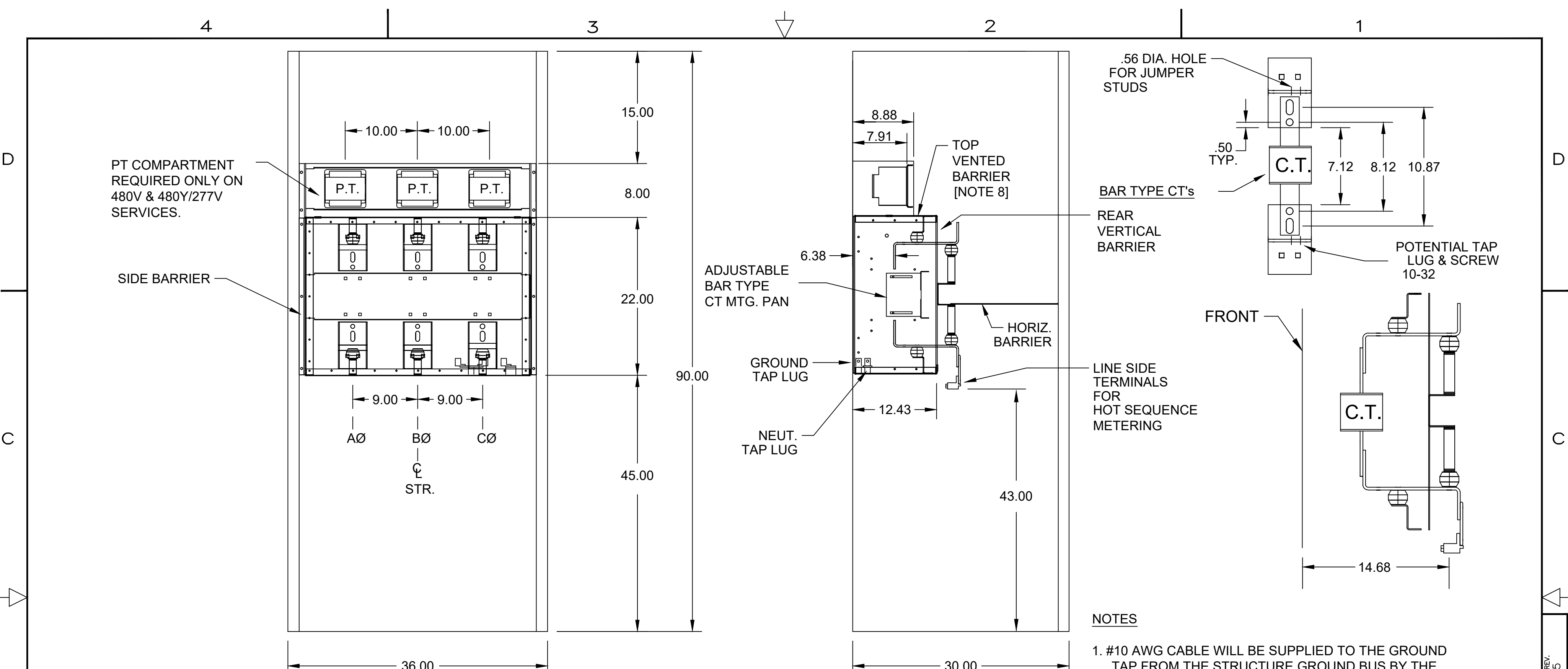
WILL ACCEPT THE FOLLOWING C.T.'S IN A 45W STRUCTURE

ABB	G.E.	ITRON	ASTRA
CLE	JAD-O	R6L	ACL
	JAD-OC		
	JCB-O		
	JCD-O		
	JCP-O		

WILL ACCEPT UP TO THREE OF THE FOLLOWING P.T.'s

ABB	G.E.	ITRON	ASTRA	ABBOTT MAGNETICS
EMP PPI	JVA-0	T5R	DA	460
EMP PPM	JVA-0C	T6R		
EPM PPX		T7R		

**Ameren Approved Switchboard - Eaton/Cutler Hammer CT/PT Compartment
480Y/277V, 1201 - 4000A Overhead Feed
Reference: Eaton #42C5547 (Sheet 1 of 4)**



WILL ACCEPT THE FOLLOWING PRIMARY BAR-TYPE CURRENT TRANSFORMERS.
 PRIMARY BAR IS NOT SUPPLIED BY EATON

ABB	G.E.	ITRON	ASTRA
CBH	JAK-O	R6B	AA
CBT	JAK-OC	R6BA	AB
CMF	JCM-O	R6BM	TA
CSF	JCT-O		TAB
	JCW-O		TCB
			TCW

WILL ACCEPT UP TO THREE OF THE FOLLOWING P.T.'s

ABB	G.E.	ITRON	ASTRA	ABBOTT MAGNETICS
EMP PPI	JVA-O	T5R	DA	460
EMP PPM	JVA-OC	T6R		
EMP PPX		T7R		

STANDARD INCOMING TERMINALS

AMPERES	CABLE RANGE
400	(2) #2-500MCM
600	(2) #2-500MCM
800	(3) #2-500MCM
1000	(4) #2-500MCM
1200	(4) #2-500MCM

NOTES

- #10 AWG CABLE WILL BE SUPPLIED TO THE GROUND TAP FROM THE STRUCTURE GROUND BUS BY THE MANUFACTURER. GROUND TAP ACCEPTS #10 AWG.
- CABLE WILL BE SUPPLIED TO THE NEUTRAL TAP FROM THE STRUCTURE NEUTRAL BY THE MANUFACTURER.
- INCOMING TERMINALS ARE SUPPLIED. REF. TABLE FOR THE STANDARD SIZES.
- DOUBLE HINGED DOORS WITH PROVISIONS FOR PADLOCKING ON CT & PT COMPARTMENT.
- TIN PLATED ALUM. BUS IS STANDARD AND COPPER OR SILVER PLATED COPPER IS OPTIONAL.
- #10-32 TAPPED HOLE WITH LUG FOR POTENTIAL METERING, AND DRILLING FOR JUMPER STUDS ARE PROVIDED.
- 0.75" HOLE IN POLY BARRIER BETWEEN CT AND PT COMPARTMENT FOR ROUTING WIRING.
- BARRIER MADE OF GLASS POLYESTER WHEN PT COMPARTMENT IS PRESENT.

**Ameren Approved Switchboard - Eaton/Cutler Hammer CT/PT Compartment
 480Y/277V, 800 - 1200A Underground Feed
 Reference: Eaton #42C5547 (Sheet 4 of 4)**

DWG. NO. 42C5547 SHEET REV. 4 5