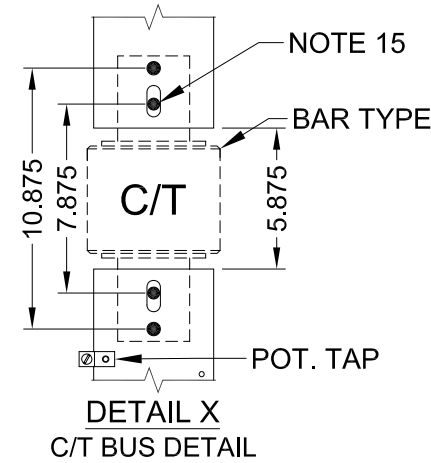


NAMEPLATE TABLE (NOTE-11)	
NP	DESCRIPTION
NP1	UTILITY METERING C/Ts
NP2	UTILITY METERING P/Ts
NP3	MAIN SERVICE DISCONNECT UTILITY METERING COMPARTMENT

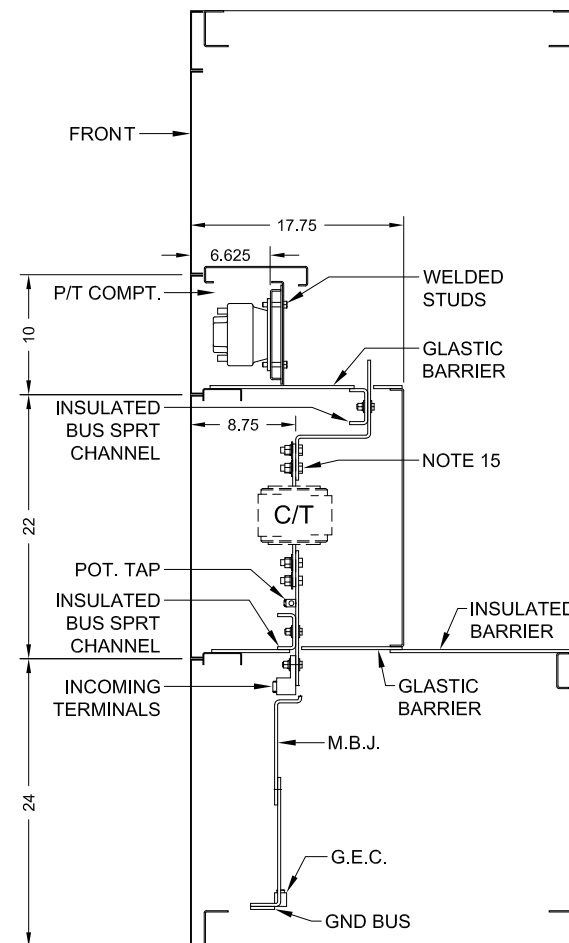
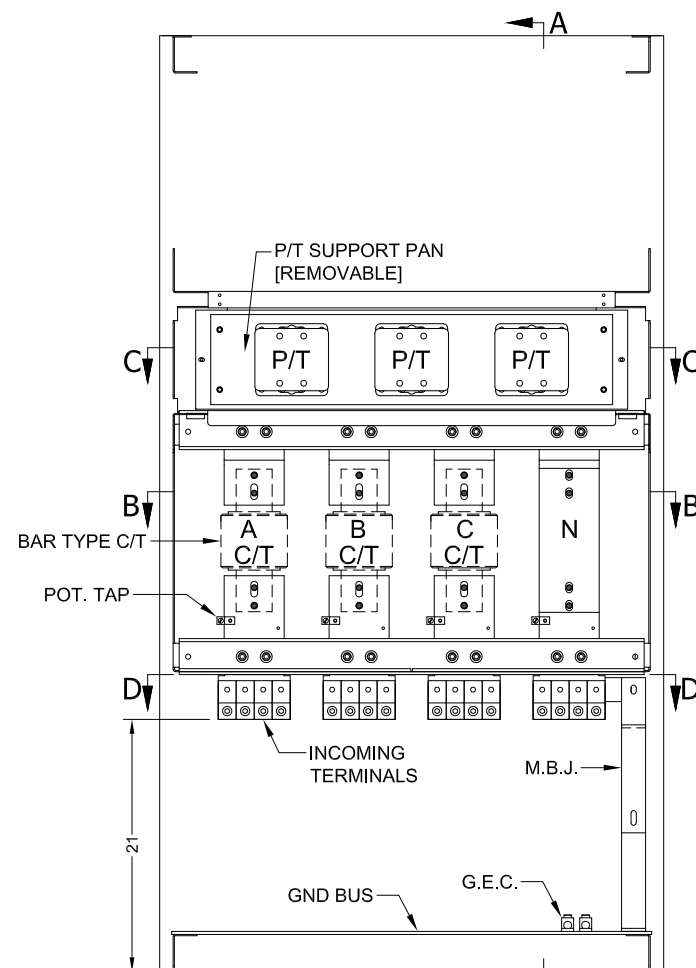
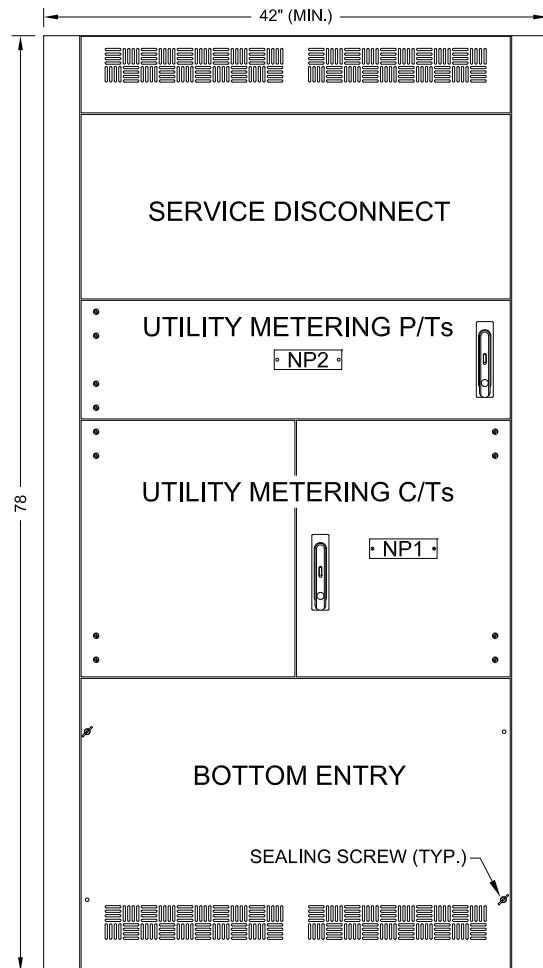
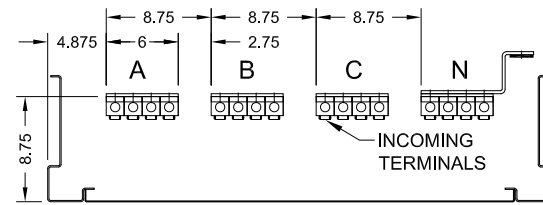
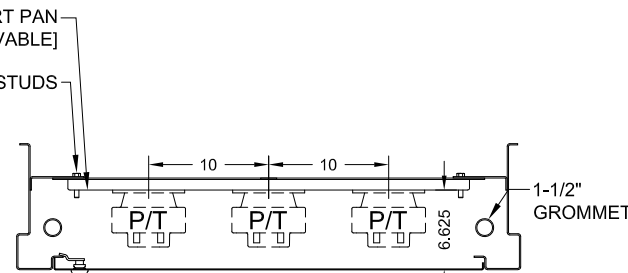
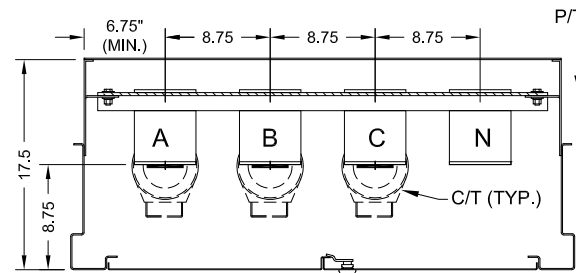
STANDARD INCOMING TERMINALS (MECHANICAL)	
AMPERES	QTY & RANGE (CU/AL)
1200	(4) #2-600 KCM / Ø & N
G.E.C.	(2) #6-350 KCM GROUND

STANDARD BUSSING	
AMPERES	QTY & SIZE
1200	(1) 5" x 1/4" COPPER



NOTES:

1. THE BUS BARS SHALL BE RIGIDLY SUPPORTED AND CAPABLE OF SUPPORTING THE WEIGHT OF THE CURRENT TRANSFORMER (15 POUNDS MAX.)
2. BUS BARS SHALL BE SILVER PLATED COPPER, 98% CONDUCTIVITY, RATED IN ACCORDANCE WITH UL 891.
3. THE C/T CABINET SHALL BE INSTALLED AS HOT-SEQUENCE ONLY (LINE-SIDE OF SERVICE DISCONNECT).
4. THE C/T SECTION SHALL BE SEPARATED FROM THE REST OF THE ENCLOSURE BY BARRIERS AND BE EQUIPPED WITH DOUBLE DOORS WITH A THREE-POINT CATCH.
5. A POTENTIAL TRANSFORMER COMPARTMENT AND MOUNTING PROVISIONS ARE PROVIDED FOR 480/277 V. SERVICES ONLY.
6. THE P/T SECTION SHALL BE SEPARATED FROM THE REST OF THE ENCLOSURE BY BARRIERS AND EQUIPPED WITH A SINGLE DOOR.
7. A HOLE, WITH A 1-1/2" GROMMET (OR BUSHING), SHALL BE PROVIDED TO ROUTE WIRES BETWEEN THE C/T & P/T COMPARTMENTS.
8. THE C/T AND P/T DOORS SHALL HAVE A FLUSH MOUNTED SWING-HANDLE WITH INTEGRATED HASP, TO ACCOMMODATE A PADLOCK WITH 5/16" DIAMETER SHANK.
9. BOTH 1/4"-20 & #10-32 POTENTIAL TAPPED HOLES SHALL BE LOCATED ON THE LINE SIDE BUS DETAILS. A #14-1/0 AWG. MECHANICAL LUG, SHALL BE INSTALLED ON THE 1/4"-20 TAPPED HOLE.
10. WHEN HOUSED IN A NEMA-3R ENCLOSURE, THERE SHALL BE A SEPARATE EXTERIOR DOUBLE DOOR, WITH THREE-WAY CATCH. IT SHALL HAVE A FLUSH MOUNTED, SWING-HANDLE WITH INTEGRATED HASP, TO ACCOMMODATE A PADLOCK WITH 5/16" DIAMETER SHANK AND SHALL SPAN THE OVERALL WIDTH OF THE UTILITY COMPARTMENTS AND ALLOW THE HINGED PANELS TO OPEN 90 DEGREES. THE EXTERIOR DOORS SHALL HAVE STOPS TO SECURE THE DOORS IN THE OPEN 90 DEGREE POSITION. A DOUBLE PADLOCK HASP [ SQ-D CAT. # SS2PL OR EQUAL ] SHALL BE PROVIDED TO ALLOW FOR JOINT CUSTOMER / UTILITY ACCESS TO THE SERVICE DISCONNECT.
11. LAMICOID NAMEPLATES SHALL BE PERMANENTLY AFFIXED TO THE (FORE MENTIONED) DOORS [ REFER TO THE NAMEPLATE TABLE FOR THEIR DESCRIPTIVE TEXT ]. NAMEPLATE 'NP3' SHALL BE INSTALLED ON THE EXTERIOR DOOR, OF THE NEMA-3R CUBICLE, HOUSING THE UTILITY COMPARTMENTS.
12. REMOVABLE COVERS, OVER UN-METERED CONDUCTORS, SHALL HAVE SEALING SCREWS.
13. INCOMING SERVICE CONDUCTORS SHALL BE RATED 75°C.
14. ALL C/T'S AND P/T'S ARE SUPPLIED AND WIRED BY AMEREN.
15. MOUNTING STUDS FOR BAR TYPE C/T'S SHALL BE 1/2"-13 x 1-1/2" ZINC PLATED STEEL SPLINE-BOLTS, WITH FLAT & SPLIT LOCK WASHERS AND HEX NUTS.
16. BUS BOLTING TORQUE VALUES SHALL BE IDENTIFIED ON A PERMANENTLY AFFIXED LABEL WITHIN THE COMPARTMENT.



**UTILITY METERING SECTION  
MAIN SERVICE DISCONNECT\*\*  
(\*\*OPTIONAL IN THIS VERTICAL SECTION)  
1200 AMPERE  
480Y/277 VOLTS  
3-PHASE, 4-WIRE**

UTILITY	PROJECT	EQUIPMENT DESIGNATION	JOB #	DRAWN BY	DATE	SHEET NUMBER		
AMEREN	-	UTILITY METERING SECTION MAIN SERVICE DISCONNECT (OPTIONAL IN THIS SECTION)	-	JSS	01/2022	1 OF 1		
		SHORT CIRCUIT RATING	VOLTAGE	AMPERAGE	SYSTEM	BUS MATERIAL	REV	DRAWING NUMBER
		65kA. SYM. RMS	480Y/277	SEE TABLE	3φ, 4W	COPPER	2	LEPCO-NXB-HS-PT