

FIG. 4  
AMEREN CT COMPARTMENT  
FRONT ELEVATIONS FOR BAR-TYPE CT's  
400-1200A (480 or 208V)

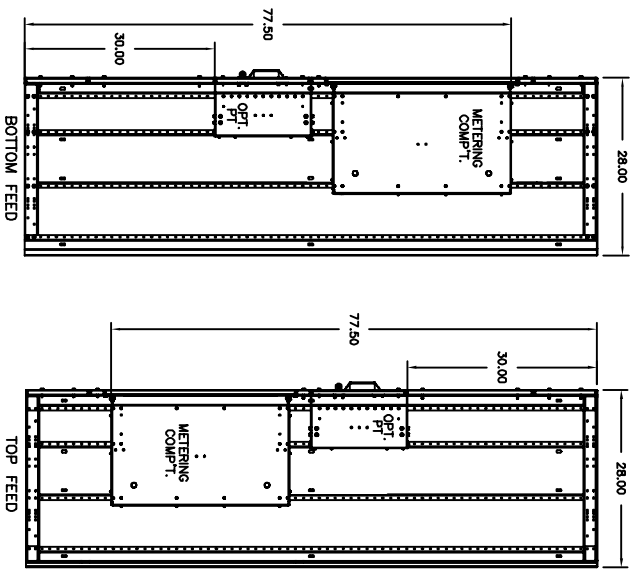


FIG. 5  
AMEREN CT COMPARTMENT  
SIDE VIEWS FOR BAR-TYPE CT's  
400-1200A (480 or 208V)  
(28D SHOWN)

- NOTES:
1. ALL DIMENSIONS ARE SHOWN IN INCHES.
  2. THIS DESIGN IS APPLICABLE TO HOT SEQUENCE METERING.
  3. P.T.'S ARE REQUIRED AT 480V. A PT COMPARTMENT IS PROVIDED FOR THIS PURPOSE.
  4. ALL DIMENSIONS SHALL BE CONSIDERED TO BE MIN. EXCEPT THOSE FOR CT MOUNTINGS, WHICH ARE NOMINAL.
  5. THE UTILITY CT COMP.T MAY BE IN THE UPPER OR LOWER PORTION OF THE SERVICE SECTION.
  6. THE CT & PT COMPARTMENTS SHALL BE COMPLETELY ISOLATED FROM THE REMAINDER OF THE SWBD BY BARRIERS METERED BY AND UNLETTERED CONDUCTORS SHALL ALSO BE SEPARATED BY BARRIERS. BARRIER MAT'L & THICKNESS SHALL BE PER UL891.
  7. THE CT & PT COMP.T ARE EQUIPPED WITH A SEALABLE, HINGED DOOR W/ PROVISIONS FOR PADLOCKING.
  8. BOTTOM OF THE CT/PT COMPARTMENT, IN RELATION TO INCOMING LOCATION, SHALL BE NO LOWER THAN 24" FOR U/G AND O/H FED GEAR.
  9. TOP OF CT/PT COMPARTMENT SHALL BE NO HIGHER THAN 78" AS MEASURED FROM THE BOTTOM OF THE SWITCHBOARD.
  10. THE SIDE & REAR COVERS ASSOCIATED W/ THE COMP.T SHALL BE SEALED WITH 2" SQUARES BOLT THE TOP AT OPPOSITE CORNERS OF THE COVER FRONT COVERS THAT PROVIDE ACCESS TO UN-METERED BUS SHALL BE SEALED W/ TAMPER PROOF SCREWS. TOOL TO REMOVE THESE SCREWS IS STORED IN COMP.T.

**Ameren Approved Switchboard - Siemens CT / PT Compartment**  
**208Y/120V, 480Y/277V, 800 - 1200 Amperes**  
**Reference: Siemens # 1S-8500-21A (Sheet 2 of 2)**

08	1E-379D	2-7-22
Rev	C.N.	Date
Apvd	CHK	DATE
RHR	JY	9-28-07
		2-14-22

Unless otherwise specified dimensions are in inches Tolerances are non-cumulative and are as follows unless specified otherwise.		AMEREN BAR-TYPE (480/208V) CT COMPARTMENT STANDARD
XX ±.030 .XXX ±.015 Angular ± 2'	Dwg No. 1S-8500-21A Scale N/D/E	
Siemens Industry, Inc. Norcross, GA		Sheet 2 of 2