

UNDERSTANDING YOUR NET METERING ENERGY STATEMENT



AMEREN MISSOURI NET METERING ENERGY STATEMENTS REFLECT HOW MUCH ELECTRICITY A CUSTOMER BUYS FROM AMEREN MISSOURI AND HOW MUCH RENEWABLE ENERGY A CUSTOMER'S SOLAR AND/OR WIND INSTALLATION HAS SUPPLIED TO OUR POWER GRID DURING A MONTHLY BILLING PERIOD.

Reading Your Net Metering Energy Statement

Below is a sample of Ameren Missouri's Net Metering energy statement and a diagram to help explain the way a renewable installation and our Net Metering system interact. Line items on the sample energy statement and the diagram are numbered and accompanied by an explanation.

YOUR NET METERING ENERGY STATEMENT, BY THE NUMBERS

- 1 Total kWh** — the amount of electricity a customer receives from Ameren Missouri.
- 2 Customer kWh to Utility** — renewable energy supplied to Ameren Missouri from the customer.
- 3 Net Billable kWh** — applies when *Total kWh* is greater than *Customer kWh to Utility*. (Total kWh minus Customer kWh to Utility)
- 4 Net Excess kWh** — applies when *Customer kWh to Utility* is greater than *Total kWh*. (Customer kWh to Utility minus Total kWh)

One result will read zero.



■ AmerenMissouri.com
 ■ 1.877.426.3736
 ■ PO Box 790352 St. Louis, MO 63179-0352
for correspondence only

FOCUSED ENERGY. For Life.

Electric Service Details									
Service from 07/13/2016 - 08/11/2016 (29 days)									
Electric Meter Read									
METER NUMBER	SERVICE FROM - TO	NO. DAYS	USAGE TYPE	READING TYPE	CURRENT READING	PREVIOUS READING	READING DIFFERENCE	MULTIPLIER	USAGE
01234567	07/13 - 08/11	29	Total kWh	Actual	18540.0000	16380.0000	2160.0000	1.0000	2160.0000
01234567	07/13 - 08/11	29	kWh Out	Actual	9711.0000	9163.0000	548.0000	1.0000	548.0000

Usage Summary

1 Total kWh	2160.0000	2 Customer kWh to Utility	548.0000
3 Net Billable kWh	1612.0000	4 Net Excess Gen kWh	0.0000

Rate 1M Res Elect Service

DESCRIPTION	USAGE	UNIT	RATE	CHARGE
Net Metering				
Total Energy Charge	1,612.00	kWh	@ \$ 0.12080000	\$194.73
Customer Charge				\$8.03
Fuel Adjustment Charge	1,612.00	kWh	@ \$-0.00002000	-\$0.03
Energy Efficiency Program Charge	1,612.00	kWh	@ \$ 0.00100000	\$1.61
Net Metering Purchase Credit	0.00	kWh	@ \$ 0.02770000	\$0.00
Energy Efficiency Investment Charge	1,612.00	kWh	@ \$ 0.00103800	\$1.67
			Total Service Amount	\$206.01
St Louis Co Municipal Charge				
DESCRIPTION	USAGE	UNIT	RATE	CHARGE
St Louis Co Municipal Charge	\$206.01		@ \$ 0.05263000	\$10.84
			Total Tax Related Charges	\$10.84
			Total Electric Charges	\$216.85

METERING DIAGRAM

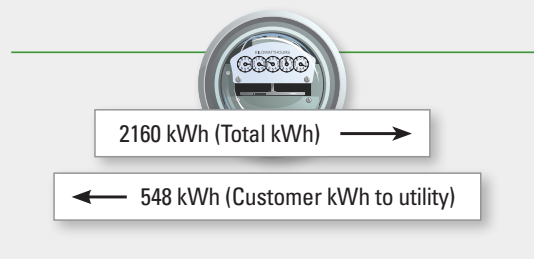
Bidirectional Net Meter

— measures how much electricity a customer receives from Ameren Missouri and how much renewable energy a customer's system supplies to our power grid.



Customer Renewable System

Bidirectional Net Meter



Customer Electric Usage

CUSTOMER BILLING SERVICE NUMBER

To talk to a Customer Service representative or for billing information, call:

Residential 1.800.552.7583
 Business 1.877.426.3736

PAYMENT ADDRESS

Ameren Missouri
 P O Box 88068
 Chicago, IL 60680-1068

Or visit AmerenMissouri.com to make an online payment.

